

An architectural rendering of a modern residential development. On the left, a multi-story building features a facade of vertical wooden slats and large glass windows. Balconies with black metal railings are visible. On the right, a taller, white building with a grid-like window pattern and blue-tinted glass balconies stands. The foreground shows a paved pedestrian walkway with several people walking. Lush greenery, including large trees and palm trees, is interspersed between the buildings and along the walkway. The sky is a clear, bright blue.

DUBAI HILLS ESTATE

PARK POINT



EXCEPTIONAL
STYLE WITH
ELEVATED PARK
VIEWS

PARK POINT





ABOUT EMAAR PROPERTIES

A global property developer, Emaar Properties is the driving force behind many of the iconic projects that have come to define Dubai on the world stage, including Burj Khalifa, The Dubai Mall, The Dubai Fountain and Downtown Dubai, its flagship development.

لمحة عن إعمار العقارية

إعمار العقارية شركة رائدة عالمياً في التطوير العقاري، وتعتبر قوة الدفع الرئيسية للعديد من المشاريع العملاقة التي أسهمت في ترسيخ مكانة دبي حول العالم، بما في ذلك برج خليفة، دبي مول، نافورة دبي، بالإضافة إلى وسط مدينة دبي الذي يعد مشروعها العمراني الأكبر.



DUBAI HILLS ESTATE

Where Life is Extraordinary

More than just a place to live, Dubai Hills Estate is an 11 million square metre master-planned community, where unsurpassed luxury meets natural wonder.

Designed to the highest standards of sustainability, the mixed-use mega-project features elegant neighbourhoods interwoven with landscaped parks, winding walkways and an 18-hole championship golf course. With world-class hospitality, shopping, education and healthcare facilities all within walking distance.

دبي هيلز استيت

حيث تجد نمط الحياة المذهل

دبي هيلز استيت أكثر من مجرد مكان للعيش، هي واحة سكنية تمتد على مساحة 11 مليون متر مربع، حيث تلتقي الفخامة التي لا تُضاهى بسحر الطبيعة الخلّاب.

تم تصميم هذا المجمّع الضخم المتعدد الاستخدامات وفقاً لأعلى معايير الاستدامة، وهو يضم أحياء سكنية راقية تربط بينها الحدائق الخضراء والممرات المتعرجة، وملعب جولف يضم 18 حفرة. بمرافقه الفاخرة التي توفر كافة خدمات الضيافة والتسوّق والتعليم والرعاية الصحية التي يمكن الوصول إليها سيراً على الأقدام.







PARK POINT AT DUBAI HILLS ESTATE

Featuring elegant homes and fabulous facilities, within one of the most exclusive new projects taking shape in Dubai, PARK POINT is a sanctuary of serene living in Dubai Hills Estate.

بارك بوينت في دبي هيلز استيت

يضم بارك بوينت منازل أنيقة ومرافق راقية ضمن أحد المشاريع الجديدة الأكثر تميزاً في دبي، وهو يعتبر ملاذاً فريداً للحياة الهادئة في دبي هيلز استيت.



- | | |
|---------------------|--------------------------|
| 01 - Community Park | 11 - Townhouse Community |
| 02 - Regional Park | 12 - Townhome Community |
| 03 - Golf Club | 13 - Private Hospital |
| 04 - Golf Academy | 14 - Government Hospital |
| 05 - Driving Range | 15 - Civil Defence |
| 06 - Tennis Academy | 16 - Police |
| 07 - Schools | 17 - Community Retail |
| 08 - Hotels | 18 - Golf Villas |
| 09 - Juma Mosque | 19 - Golf Apartments |
| 10 - Metro Station | 20 - Business Park |



FACILITIES & LIFESTYLE

A naturally beautiful lifestyle

Experience healthy living in harmony with nature, with long shaded pathways connecting parks, pools and people of all ages. Enjoy an endless array of community facilities around Dubai Hills Estate, from a modern health club, golf club to nature trails, jogging tracks, children's play areas, and many other sporting, entertainment and leisure facilities.

Stroll along a network of green corridors to community shopping centres or the neighbourhood mosque, while your kids bike safely to school on dedicated cycling tracks. A great selection of restaurants, cafés, hotels, medical clinics, spas and salons are all within easy reach, even as the allure of Downtown Dubai rises majestically on the nearby horizon.

اكتشف مرافق وأسلوب الحياة الراقية

اكتشف روعة الحياة على طبيعتها

اختبر أسلوب الحياة الصحي في تناغم مثالي مع الطبيعة، بفضل الممرات الطويلة المظللة التي تربط بين الحدائق وأحواض السباحة وسكان المجمع من مختلف الأعمار. استمتع بمجموعة لامتناهية من المرافق، من النادي الصحي الحديث ونادي الجولف، إلى المتنزهات الطبيعية ومضامير الجري وباحات لعب الأطفال، وسواها من المرافق الرياضية والترفيهية.

اكتشف متعة السير على امتداد شبكة واسعة من الممرات الخضراء التي ترتبط بمراكز التسوق أو المؤدية إلى المسجد، بينما يمكن لأطفالك التوجه إلى المدرسة بأمان على دراجاتهم الهوائية من خلال مسارات مخصصة للدراجات. كما يمكنك الوصول بسهولة إلى مجموعة رائعة من المطاعم والمقاهي والفنادق والعيادات الطبية والمنتجعات والصالونات. بارك بوينت تتمتع بإطلالة وسط مدينة دبي المهيبة. اكتشف مرافق وأسلوب الحياة الراقية.

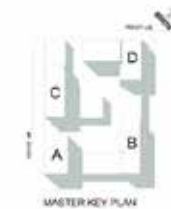




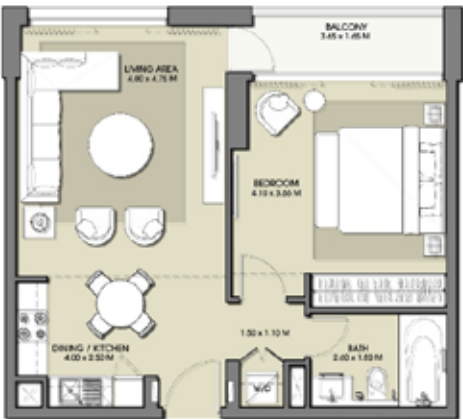


FLOOR PLANS

PARK POINT

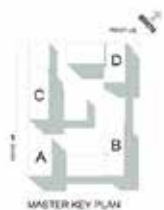


1 BEDROOM - 1.0							
LEVEL	UNIT NUMBER	AREA					
		SUITE		BALCONY		TOTAL	
		Ft²	m²	Ft²	m²	Ft²	m²
BLOCK A							
2	A201	601.1	55.8	67.38	6.3	668.44	62.1
	A205	603.3	56.1	74.49	6.9	677.81	63.0
3	A301	601.1	55.8	67.38	6.3	668.44	62.1
	A305	603.3	56.1	74.49	6.9	677.81	63.0
4	A401	601.1	55.8	67.38	6.3	668.44	62.1
	A405	603.3	56.1	74.49	6.9	677.81	63.0
5	A501	601.1	55.8	67.38	6.3	668.44	62.1
	A505	603.3	56.1	74.49	6.9	677.81	63.0
6	A601	601.1	55.8	67.38	6.3	668.44	62.1
	A605	603.3	56.1	74.49	6.9	677.81	63.0
7	A701	601.1	55.8	67.38	6.3	668.44	62.1
8	A801	601.1	55.8	67.38	6.3	668.44	62.1
9	A901	601.1	55.8	67.38	6.3	668.44	62.1



1. All dimensions are in imperial and metric, and measured to structural elements and exclude wall finishes and construction tolerances. 2. All materials, dimensions, and drawings are approximate only. 3. Information is subject to change without notice, at developer's absolute discretion. 4. Actual area may vary from the stated area. 5. Drawings not to scale. 6. All images used are for illustrative purposes only and do not represent the actual size, features, specifications, fittings, and furnishings. 7. The developer reserves the right to make revisions/ alterations, at its absolute discretion, without any liability whatsoever. *Please note that landscaping and swimming pool are not provided by the developer.

DUBAI HILLS
ESTATE
PARK POINT



1 BEDROOM - 1.0							
LEVEL	UNIT NUMBER	AREA					
		SUITE		BALCONY		TOTAL	
		Ft²	m²	Ft²	m²	Ft²	m²

BLOCK B

2	B213	616.8	57.3	67.92	6.3	684.70	63.6
3	B313	616.8	57.3	67.92	6.3	684.70	63.6
4	B413	616.8	57.3	67.92	6.3	684.70	63.6
5	B513	616.8	57.3	67.92	6.3	684.70	63.6
6	B613	616.8	57.3	67.92	6.3	684.70	63.6



LEVEL 01



LEVEL 02 - 06



LEVEL 07

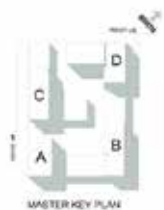


LEVEL 08



LEVEL 09

DUBAI HILLS
ESTATE
PARK POINT



1 BEDROOM - 1.0							
LEVEL	UNIT NUMBER	AREA					
		SUITE		BALCONY		TOTAL	
		Ft²	m²	Ft²	m²	Ft²	m²

BLOCK C

2	C214	623.5	57.9	70.07	6.5	693.52	64.4
3	C314	625.7	58.1	67.92	6.3	693.63	64.4
4	C414	623.5	57.9	70.07	6.5	693.52	64.4
5	C514	625.7	58.1	67.92	6.3	693.63	64.4
6	C514	625.7	58.1	67.92	6.3	693.63	64.4



LEVEL 01



LEVEL 02 - 06



LEVEL 07



LEVEL 08



LEVEL 09

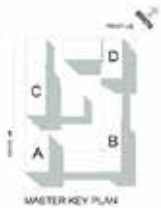


1. All dimensions are in imperial and metric, and measured to structural elements and exclude wall finishes and construction tolerances. 2. All materials, dimensions, and drawings are approximate only. 3. Information is subject to change without notice, at developer's absolute discretion. 4. Actual area may vary from the stated area. 5. Drawings not to scale. 6. All images used are for illustrative purposes only and do not represent the actual size, features, specifications, fittings, and furnishings. 7. The developer reserves the right to make revisions/ alterations, at its absolute discretion, without any liability whatsoever. *Please note that landscaping and swimming pool are not provided by the developer.



1. All dimensions are in imperial and metric, and measured to structural elements and exclude wall finishes and construction tolerances. 2. All materials, dimensions, and drawings are approximate only. 3. Information is subject to change without notice, at developer's absolute discretion. 4. Actual area may vary from the stated area. 5. Drawings not to scale. 6. All images used are for illustrative purposes only and do not represent the actual size, features, specifications, fittings, and furnishings. 7. The developer reserves the right to make revisions/ alterations, at its absolute discretion, without any liability whatsoever. *Please note that landscaping and swimming pool are not provided by the developer.

DUBAI HILLS
ESTATE
PARK POINT



1 BEDROOM - 1.0							
LEVEL	UNIT NUMBER	AREA					
		SUITE		BALCONY		TOTAL	
		Ft²	m²	Ft²	m²	Ft²	m²
BLOCK C							
1	C103	624.6	58.0	69.97	6.5	694.60	64.5
	C104	624.6	58.0	69.97	6.5	694.60	64.5
	C105	623.3	57.9	71.37	6.6	694.71	64.5
	C106	631.5	58.7	69.97	6.5	701.49	65.2
2	C201	623.9	58.0	67.71	6.3	691.59	64.3
	C208	624.6	58.0	69.97	6.5	694.60	64.5
	C209	624.6	58.0	69.97	6.5	694.60	64.5
	C210	624.6	58.0	70.07	6.5	694.71	64.5
	C211	631.5	58.7	69.97	6.5	701.49	65.2
3	C213	624.6	58.0	69.97	6.5	694.60	64.5
	C301	623.9	58.0	67.71	6.3	691.59	64.3
	C308	624.6	58.0	69.97	6.5	694.60	64.5
	C309	624.6	58.0	69.97	6.5	694.60	64.5
	C310	624.6	58.0	70.07	6.5	694.71	64.5
	C311	631.5	58.7	69.97	6.5	701.49	65.2
4	C313	626.8	58.2	67.81	6.3	694.60	64.5
	C401	623.9	58.0	67.71	6.3	691.59	64.3
	C408	624.6	58.0	69.97	6.5	694.60	64.5
	C409	624.6	58.0	69.97	6.5	694.60	64.5
	C410	624.6	58.0	70.07	6.5	694.71	64.5
	C411	631.5	58.7	69.97	6.5	701.49	65.2
	C413	624.6	58.0	69.97	6.5	694.60	64.5



LEVEL 01



LEVEL 02 - 06



LEVEL 07



LEVEL 08



LEVEL 09

DUBAI HILLS
ESTATE
PARK POINT



1 BEDROOM - 1.0							
LEVEL	UNIT NUMBER	AREA					
		SUITE		BALCONY		TOTAL	
		Ft²	m²	Ft²	m²	Ft²	m²
BLOCK C							
5	C501	623.9	58.0	67.71	6.3	691.59	64.3
	C508	624.6	58.0	69.97	6.5	694.60	64.5
	C509	624.6	58.0	69.97	6.5	694.60	64.5
	C510	624.6	58.0	70.07	6.5	694.71	64.5
	C511	631.5	58.7	69.97	6.5	701.49	65.2
	C513	626.8	58.2	67.81	6.3	694.60	64.5
6	C601	623.9	58.0	67.71	6.3	691.59	64.3
	C608	624.6	58.0	69.97	6.5	694.60	64.5
	C609	624.6	58.0	69.97	6.5	694.60	64.5
	C610	624.6	58.0	70.07	6.5	694.71	64.5
	C611	631.5	58.7	69.97	6.5	701.49	65.2
	C613	624.6	58.0	69.97	6.5	694.60	64.5
7	C703	625.4	58.1	69.43	6.5	694.82	64.6
	C704	628.2	58.4	69.43	6.5	697.61	64.8
8	C803	625.4	58.1	69.43	6.5	694.82	64.6
	C804	628.2	58.4	69.43	6.5	697.61	64.8



LEVEL 01



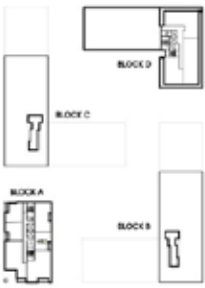
LEVEL 02 - 06



LEVEL 07



LEVEL 08



LEVEL 09

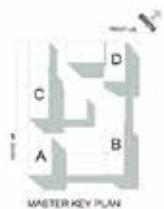


1. All dimensions are in imperial and metric, and measured to structural elements and exclude wall finishes and construction tolerances. 2. All materials, dimensions, and drawings are approximate only. 3. Information is subject to change without notice, at developer's absolute discretion. 4. Actual area may vary from the stated area. 5. Drawings not to scale. 6. All images used are for illustrative purposes only and do not represent the actual size, features, specifications, fittings, and furnishings. 7. The developer reserves the right to make revisions/ alterations, at its absolute discretion, without any liability whatsoever. *Please note that landscaping and swimming pool are not provided by the developer.



1. All dimensions are in imperial and metric, and measured to structural elements and exclude wall finishes and construction tolerances. 2. All materials, dimensions, and drawings are approximate only. 3. Information is subject to change without notice, at developer's absolute discretion. 4. Actual area may vary from the stated area. 5. Drawings not to scale. 6. All images used are for illustrative purposes only and do not represent the actual size, features, specifications, fittings, and furnishings. 7. The developer reserves the right to make revisions/ alterations, at its absolute discretion, without any liability whatsoever. *Please note that landscaping and swimming pool are not provided by the developer.

DUBAI HILLS
ESTATE
PARK POINT



1 BEDROOM - 1.0							
LEVEL	UNIT NUMBER	AREA					
		SUITE		BALCONY		TOTAL	
		Ft²	m²	Ft²	m²	Ft²	m²

BLOCK C

2	C215	622.6	57.8	69.97	6.5	692.56	64.3
3	C315	624.7	58.0	67.81	6.3	692.56	64.3
4	C415	622.6	57.8	69.97	6.5	692.56	64.3
5	C515	624.7	58.0	67.81	6.3	692.56	64.3
6	C615	622.6	57.8	69.97	6.5	692.56	64.3



LEVEL 01



LEVEL 02 - 06



LEVEL 07

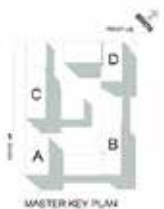


LEVEL 08



LEVEL 09

DUBAI HILLS
ESTATE
PARK POINT



1 BEDROOM - 1.0.a							
LEVEL	UNIT NUMBER	AREA					
		SUITE		BALCONY		TOTAL	
		Ft²	m²	Ft²	m²	Ft²	m²

BLOCK C

1	C108	670.4	62.3	188.2	17.5	858.5	79.8
	C109	672.1	62.4	190.8	17.7	862.9	80.2
	C110	676.1	62.8	183.8	17.1	859.9	79.9

BLOCK D

1	D102	730.1	67.8	222.5	20.7	952.6	88.5
---	------	-------	------	-------	------	-------	------



LEVEL 01



LEVEL 02 - 06



LEVEL 07



LEVEL 08



LEVEL 09

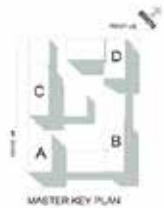


1. All dimensions are in imperial and metric, and measured to structural elements and exclude wall finishes and construction tolerances. 2. All materials, dimensions, and drawings are approximate only. 3. Information is subject to change without notice, at developer's absolute discretion. 4. Actual area may vary from the stated area. 5. Drawings not to scale. 6. All images used are for illustrative purposes only and do not represent the actual size, features, specifications, fittings, and furnishings. 7. The developer reserves the right to make revisions/ alterations, at its absolute discretion, without any liability whatsoever. *Please note that landscaping and swimming pool are not provided by the developer.



1. All dimensions are in imperial and metric, and measured to structural elements and exclude wall finishes and construction tolerances. 2. All materials, dimensions, and drawings are approximate only. 3. Information is subject to change without notice, at developer's absolute discretion. 4. Actual area may vary from the stated area. 5. Drawings not to scale. 6. All images used are for illustrative purposes only and do not represent the actual size, features, specifications, fittings, and furnishings. 7. The developer reserves the right to make revisions/ alterations, at its absolute discretion, without any liability whatsoever. *Please note that landscaping and swimming pool are not provided by the developer.

DUBAI HILLS
ESTATE
PARK POINT

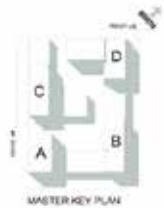


1 BEDROOM - 1.0.b								
LEVEL	UNIT NUMBER	AREA						
		SUITE		BALCONY		TOTAL		
		Ft²	m²	Ft²	m²	Ft²	m²	
BLOCK A								
2	A204	573.8	53.3	61.0	5.7	634.9	59.0	
3	A304	575.0	53.4	61.7	5.7	636.7	59.2	
4	A404	573.8	53.3	61.0	5.7	634.9	59.0	
5	A504	575.0	53.4	61.7	5.7	636.7	59.2	
6	A604	573.8	53.3	61.0	5.7	634.9	59.0	
7	A704	575.0	53.4	61.7	5.7	636.7	59.2	
8	A804	573.8	53.3	61.0	5.7	634.9	59.0	
9	A903	575.3	53.5	61.0	5.7	636.4	59.1	



1. All dimensions are in imperial and metric, and measured to structural elements and exclude wall finishes and construction tolerances. 2. All materials, dimensions, and drawings are approximate only. 3. Information is subject to change without notice, at developer's absolute discretion. 4. Actual area may vary from the stated area. 5. Drawings not to scale. 6. All images used are for illustrative purposes only and do not represent the actual size, features, specifications, fittings, and furnishings. 7. The developer reserves the right to make revisions/ alterations, at its absolute discretion, without any liability whatsoever. *Please note that landscaping and swimming pool are not provided by the developer.

DUBAI HILLS
ESTATE
PARK POINT

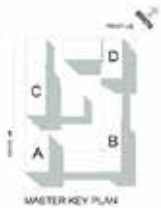


1 BEDROOM - 1.0.c							
LEVEL	UNIT NUMBER	AREA					
		SUITE		BALCONY		TOTAL	
		Ft²	m²	Ft²	m²	Ft²	m²
BLOCK A							
7	A705	603.3	56.1	74.4	6.9	677.8	63.0
8	A805	603.3	56.1	74.5	6.9	677.8	63.0
9	A904	603.3	56.1	65.2	6.1	668.6	62.1

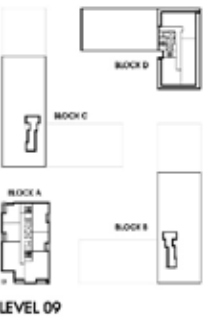
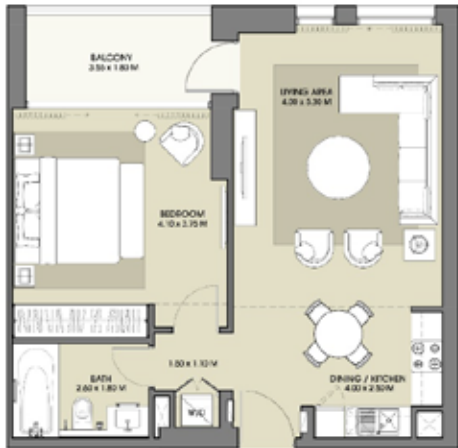


1. All dimensions are in imperial and metric, and measured to structural elements and exclude wall finishes and construction tolerances. 2. All materials, dimensions, and drawings are approximate only. 3. Information is subject to change without notice, at developer's absolute discretion. 4. Actual area may vary from the stated area. 5. Drawings not to scale. 6. All images used are for illustrative purposes only and do not represent the actual size, features, specifications, fittings, and furnishings. 7. The developer reserves the right to make revisions/ alterations, at its absolute discretion, without any liability whatsoever. *Please note that landscaping and swimming pool are not provided by the developer.

DUBAI HILLS
ESTATE
PARK POINT



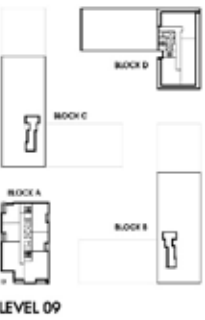
1 BEDROOM - 1.0.d							
LEVEL	UNIT NUMBER	AREA					
		SUITE		BALCONY		TOTAL	
		Ft²	m²	Ft²	m²	Ft²	m²
BLOCK D							
1	D104	662.6	61.6	70.2	6.5	732.8	68.1
	D105	658.0	61.1	68.9	6.4	726.9	67.5
2	D201	653.4	60.7	73.2	6.8	726.6	67.5
	D202	655.4	60.9	73.2	6.8	728.6	67.7
	D203	655.4	60.9	73.2	6.8	728.6	67.7
	D205	661.6	61.5	61.5	5.7	723.0	67.2
	D206	656.6	61.0	70.2	6.5	726.8	67.5
	D301	653.4	60.7	73.2	6.8	726.6	67.5
3	D302	655.4	60.9	73.2	6.8	728.6	67.7
	D303	655.4	60.9	73.2	6.8	728.6	67.7
	D305	661.6	61.5	61.5	5.7	723.0	67.2
	D306	656.6	61.0	70.2	6.5	726.8	67.5
4	D401	653.4	60.7	73.2	6.8	726.6	67.5
	D402	655.4	60.9	73.2	6.8	728.6	67.7
	D403	655.4	60.9	73.2	6.8	728.6	67.7
	D405	661.6	61.5	61.5	5.7	723.0	67.2
	D406	656.6	61.0	70.2	6.5	726.8	67.5



DUBAI HILLS
ESTATE
PARK POINT



1 BEDROOM - 1.0.d							
LEVEL	UNIT NUMBER	AREA					
		SUITE		BALCONY		TOTAL	
		Ft²	m²	Ft²	m²	Ft²	m²
BLOCK D							
5	D501	653.4	60.7	73.2	6.8	726.6	67.5
	D502	655.4	60.9	73.2	6.8	728.6	67.7
	D503	655.4	60.9	73.2	6.8	728.6	67.7
	D505	661.6	61.5	61.5	5.7	723.0	67.2
	D506	656.6	61.0	70.2	6.5	726.8	67.5
6	D601	653.4	60.7	73.2	6.8	726.6	67.5
	D602	655.4	60.9	73.2	6.8	728.6	67.7
	D603	655.4	60.9	73.2	6.8	728.6	67.7
	D605	661.6	61.5	61.5	5.7	723.0	67.2
	D606	656.6	61.0	70.2	6.5	726.8	67.5
7	D704	661.6	61.5	61.5	5.7	723.0	67.2
	D705	656.6	61.0	70.2	6.5	726.8	67.5
8	D804	661.6	61.5	61.5	5.7	723.0	67.2
	D805	656.6	61.0	70.2	6.5	726.8	67.5

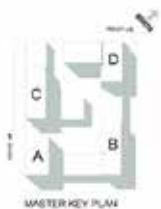


1. All dimensions are in imperial and metric, and measured to structural elements and exclude wall finishes and construction tolerances. 2. All materials, dimensions, and drawings are approximate only. 3. Information is subject to change without notice, at developer's absolute discretion. 4. Actual area may vary from the stated area. 5. Drawings not to scale. 6. All images used are for illustrative purposes only and do not represent the actual size, features, specifications, fittings, and furnishings. 7. The developer reserves the right to make revisions/ alterations, at its absolute discretion, without any liability whatsoever. *Please note that landscaping and swimming pool are not provided by the developer.



1. All dimensions are in imperial and metric, and measured to structural elements and exclude wall finishes and construction tolerances. 2. All materials, dimensions, and drawings are approximate only. 3. Information is subject to change without notice, at developer's absolute discretion. 4. Actual area may vary from the stated area. 5. Drawings not to scale. 6. All images used are for illustrative purposes only and do not represent the actual size, features, specifications, fittings, and furnishings. 7. The developer reserves the right to make revisions/ alterations, at its absolute discretion, without any liability whatsoever. *Please note that landscaping and swimming pool are not provided by the developer.

DUBAI HILLS
ESTATE
PARK POINT



2 BEDROOM – 2.0							
LEVEL	UNIT NUMBER	AREA					
		SUITE		BALCONY		TOTAL	
		Ft²	m²	Ft²	m²	Ft²	m²

BLOCK B

1	B105	973.2	90.4	69.4	6.5	1042.6	96.9
	B106	957.4	88.9	68.6	6.4	1025.9	95.3
	B107	959.0	89.1	67.3	6.3	1026.2	95.3



LEVEL 01



LEVEL 02 - 06



LEVEL 07



LEVEL 08



LEVEL 09

DUBAI HILLS
ESTATE
PARK POINT



2 BEDROOM – 2.0							
LEVEL	UNIT NUMBER	AREA					
		SUITE		BALCONY		TOTAL	
		Ft²	m²	Ft²	m²	Ft²	m²

BLOCK B

2	B202	958.6	89.1	68.1	6.3	1026.8	95.4
	B205	971.0	90.2	69.4	6.5	1040.4	96.7
	B206	953.3	88.6	67.9	6.3	1021.2	94.9
	B207	957.4	88.9	67.3	6.3	1024.6	95.2
3	B302	958.6	89.1	68.1	6.3	1026.8	95.4
	B305	971.0	90.2	69.4	6.5	1040.4	96.7
	B306	953.3	88.6	67.9	6.3	1021.2	94.9
	B307	957.4	88.9	67.3	6.3	1024.6	95.2
4	B402	958.6	89.1	68.1	6.3	1026.8	95.4
	B405	971.0	90.2	69.4	6.5	1040.4	96.7
	B406	953.3	88.6	67.9	6.3	1021.2	94.9
	B407	957.4	88.9	67.3	6.3	1024.6	95.2
5	B502	958.6	89.1	68.1	6.3	1026.8	95.4
	B505	971.0	90.2	69.4	6.5	1040.4	96.7
	B506	953.3	88.6	67.9	6.3	1021.2	94.9
	B507	957.4	88.9	67.3	6.3	1024.6	95.2



LEVEL 01



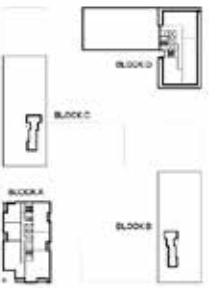
LEVEL 02 - 06



LEVEL 07



LEVEL 08



LEVEL 09

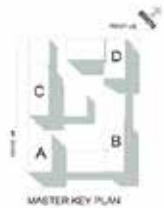


1. All dimensions are in imperial and metric, and measured to structural elements and exclude wall finishes and construction tolerances. 2. All materials, dimensions, and drawings are approximate only. 3. Information is subject to change without notice, at developer's absolute discretion. 4. Actual area may vary from the stated area. 5. Drawings not to scale. 6. All images used are for illustrative purposes only and do not represent the actual size, features, specifications, fittings, and furnishings. 7. The developer reserves the right to make revisions/ alterations, at its absolute discretion, without any liability whatsoever. *Please note that landscaping and swimming pool are not provided by the developer.



1. All dimensions are in imperial and metric, and measured to structural elements and exclude wall finishes and construction tolerances. 2. All materials, dimensions, and drawings are approximate only. 3. Information is subject to change without notice, at developer's absolute discretion. 4. Actual area may vary from the stated area. 5. Drawings not to scale. 6. All images used are for illustrative purposes only and do not represent the actual size, features, specifications, fittings, and furnishings. 7. The developer reserves the right to make revisions/ alterations, at its absolute discretion, without any liability whatsoever. *Please note that landscaping and swimming pool are not provided by the developer.

DUBAI HILLS
ESTATE
PARK POINT



2 BEDROOM – 2.0							
LEVEL	UNIT NUMBER	AREA					
		SUITE		BALCONY		TOTAL	
		Ft²	m²	Ft²	m²	Ft²	m²

BLOCK B								
6	B602	958.6	89.1	68.1	6.3	1026.8	95.4	
	B605	971.0	90.2	69.4	6.5	1040.4	96.7	
	B606	953.3	88.6	67.9	6.3	1021.2	94.9	
	B607	957.4	88.9	67.3	6.3	1024.6	95.2	

BLOCK C								
2	C202	956.9	88.9	67.7	6.3	1024.6	95.2	
	C216	962.9	89.5	67.8	6.3	1030.8	95.8	
3	C302	956.9	88.9	67.7	6.3	1024.6	95.2	
	C316	962.9	89.5	67.8	6.3	1030.8	95.8	
4	C402	956.9	88.9	67.7	6.3	1024.6	95.2	
	C416	962.9	89.5	67.8	6.3	1030.8	95.8	
5	C502	956.9	88.9	67.7	6.3	1024.6	95.2	
	C516	962.9	89.5	67.8	6.3	1030.8	95.8	
6	C602	956.9	88.9	67.7	6.3	1024.6	95.2	
	C616	962.9	89.5	67.8	6.3	1030.8	95.8	



LEVEL 01



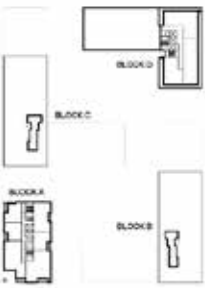
LEVEL 02 - 06



LEVEL 07

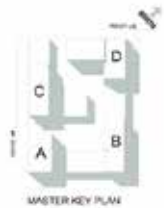


LEVEL 08



LEVEL 09

DUBAI HILLS
ESTATE
PARK POINT



2 BEDROOM – 2.0							
LEVEL	UNIT NUMBER	AREA					
		SUITE		BALCONY		TOTAL	
		Ft²	m²	Ft²	m²	Ft²	m²

BLOCK B								
2	B212	959.9	89.2	68.4	6.4	1028.3	95.5	
3	B312	959.9	89.2	68.4	6.4	1028.3	95.5	
4	B412	959.9	89.2	68.4	6.4	1028.3	95.5	
5	B512	959.9	89.2	68.4	6.4	1028.3	95.5	
6	B612	959.9	89.2	68.4	6.4	1028.3	95.5	

BLOCK C								
2	C205	956.2	88.8	68.5	6.4	1024.6	95.2	
3	C305	956.2	88.8	68.5	6.4	1024.6	95.2	
4	C405	956.2	88.8	68.5	6.4	1024.6	95.2	
5	C505	956.2	88.8	68.5	6.4	1024.6	95.2	
6	C605	956.2	88.8	68.5	6.4	1024.6	95.2	



LEVEL 01



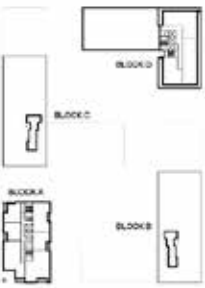
LEVEL 02 - 06



LEVEL 07



LEVEL 08



LEVEL 09

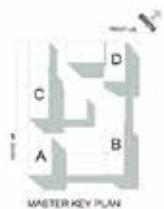


1. All dimensions are in imperial and metric, and measured to structural elements and exclude wall finishes and construction tolerances. 2. All materials, dimensions, and drawings are approximate only. 3. Information is subject to change without notice, at developer's absolute discretion. 4. Actual area may vary from the stated area. 5. Drawings not to scale. 6. All images used are for illustrative purposes only and do not represent the actual size, features, specifications, fittings, and furnishings. 7. The developer reserves the right to make revisions/ alterations, at its absolute discretion, without any liability whatsoever. *Please note that landscaping and swimming pool are not provided by the developer.



1. All dimensions are in imperial and metric, and measured to structural elements and exclude wall finishes and construction tolerances. 2. All materials, dimensions, and drawings are approximate only. 3. Information is subject to change without notice, at developer's absolute discretion. 4. Actual area may vary from the stated area. 5. Drawings not to scale. 6. All images used are for illustrative purposes only and do not represent the actual size, features, specifications, fittings, and furnishings. 7. The developer reserves the right to make revisions/ alterations, at its absolute discretion, without any liability whatsoever. *Please note that landscaping and swimming pool are not provided by the developer.

DUBAI HILLS
ESTATE
PARK POINT



2 BEDROOM – 2.0.a							
LEVEL	UNIT NUMBER	AREA					
		SUITE		BALCONY		TOTAL	
		Ft ²	m ²	Ft ²	m ²	Ft ²	m ²

BLOCK B

1	B102	1012.0	94.0	308.8	28.7	1320.9	122.7
	B103	1007.8	93.6	310.0	28.8	1317.8	122.4

BLOCK C

1	C111	1011.5	94.0	257.5	23.9	1269.0	117.9
---	------	--------	------	-------	------	--------	-------

BLOCK D

1	D101	1084.8	100.8	304.9	28.3	1389.7	129.1
---	------	--------	-------	-------	------	--------	-------



LEVEL 01



LEVEL 02 - 06



LEVEL 07

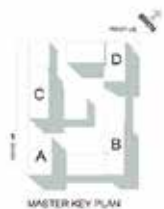


LEVEL 08



LEVEL 09

DUBAI HILLS
ESTATE
PARK POINT



2 BEDROOM – 2.0.b							
LEVEL	UNIT NUMBER	AREA					
		SUITE		BALCONY		TOTAL	
		Ft ²	m ²	Ft ²	m ²	Ft ²	m ²

BLOCK A

1	A102	1016.2	94.4	358.7	33.3	1374.9	127.7
---	------	--------	------	-------	------	--------	-------



LEVEL 01



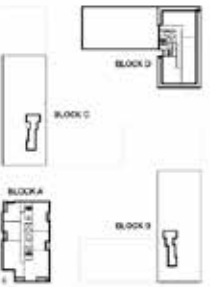
LEVEL 02 - 06



LEVEL 07



LEVEL 08



LEVEL 09

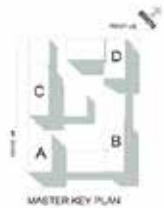


1. All dimensions are in imperial and metric, and measured to structural elements and exclude wall finishes and construction tolerances. 2. All materials, dimensions, and drawings are approximate only. 3. Information is subject to change without notice, at developer's absolute discretion. 4. Actual area may vary from the stated area. 5. Drawings not to scale. 6. All images used are for illustrative purposes only and do not represent the actual size, features, specifications, fittings, and furnishings. 7. The developer reserves the right to make revisions/ alterations, at its absolute discretion, without any liability whatsoever. *Please note that landscaping and swimming pool are not provided by the developer.



1. All dimensions are in imperial and metric, and measured to structural elements and exclude wall finishes and construction tolerances. 2. All materials, dimensions, and drawings are approximate only. 3. Information is subject to change without notice, at developer's absolute discretion. 4. Actual area may vary from the stated area. 5. Drawings not to scale. 6. All images used are for illustrative purposes only and do not represent the actual size, features, specifications, fittings, and furnishings. 7. The developer reserves the right to make revisions/ alterations, at its absolute discretion, without any liability whatsoever. *Please note that landscaping and swimming pool are not provided by the developer.

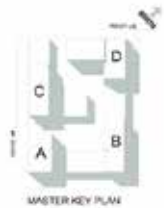
DUBAI HILLS
ESTATE
PARK POINT



2 BEDROOM – 2.1							
LEVEL	UNIT NUMBER	AREA					
		SUITE		BALCONY		TOTAL	
		Ft²	m²	Ft²	m²	Ft²	m²
BLOCK A							
2	A202	1242.2	115.4	119.0	11.1	1361.2	126.5
4	A402	1242.2	115.4	119.0	11.1	1361.2	126.5
6	A602	1242.2	115.4	119.0	11.1	1361.2	126.5
8	A802	1241.8	115.4	119.0	11.1	1360.9	126.4



DUBAI HILLS
ESTATE
PARK POINT



2 BEDROOM – 2.1.a							
LEVEL	UNIT NUMBER	AREA					
		SUITE		BALCONY		TOTAL	
		Ft²	m²	Ft²	m²	Ft²	m²
BLOCK A							
3	A302	1271.3	118.1	94.8	8.8	1366.2	126.9
5	A502	1271.3	118.1	94.8	8.8	1366.2	126.9
7	A702	1270.7	118.1	95.5	8.9	1366.2	126.9
9	A902	1270.3	118.0	95.5	8.9	1365.7	126.9

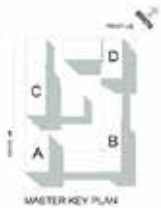


1. All dimensions are in imperial and metric, and measured to structural elements and exclude wall finishes and construction tolerances. 2. All materials, dimensions, and drawings are approximate only. 3. Information is subject to change without notice, at developer's absolute discretion. 4. Actual area may vary from the stated area. 5. Drawings not to scale. 6. All images used are for illustrative purposes only and do not represent the actual size, features, specifications, fittings, and furnishings. 7. The developer reserves the right to make revisions/ alterations, at its absolute discretion, without any liability whatsoever. *Please note that landscaping and swimming pool are not provided by the developer.



1. All dimensions are in imperial and metric, and measured to structural elements and exclude wall finishes and construction tolerances. 2. All materials, dimensions, and drawings are approximate only. 3. Information is subject to change without notice, at developer's absolute discretion. 4. Actual area may vary from the stated area. 5. Drawings not to scale. 6. All images used are for illustrative purposes only and do not represent the actual size, features, specifications, fittings, and furnishings. 7. The developer reserves the right to make revisions/ alterations, at its absolute discretion, without any liability whatsoever. *Please note that landscaping and swimming pool are not provided by the developer.

DUBAI HILLS
ESTATE
PARK POINT



2 BEDROOM – 2.2							
LEVEL	UNIT NUMBER	AREA					
		SUITE		BALCONY		TOTAL	
		Ft²	m²	Ft²	m²	Ft²	m²
BLOCK B							
2	B201	876.1	81.4	67.2	6.2	943.2	87.6
3	B301	876.1	81.4	67.2	6.2	943.2	87.6
4	B401	876.1	81.4	67.2	6.2	943.2	87.6
5	B501	876.1	81.4	67.2	6.2	943.2	87.6
6	B601	876.1	81.4	67.2	6.2	943.2	87.6

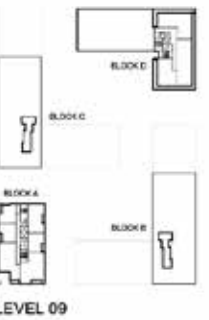
BLOCK C							
1	C102	869.1	80.7	67.9	6.3	937.0	87.1
2	C207	869.1	80.7	67.9	6.3	937.0	87.1
3	C307	869.1	80.7	67.9	6.3	937.0	87.1
4	C407	869.1	80.7	67.9	6.3	937.0	87.1
5	C507	869.1	80.7	67.9	6.3	937.0	87.1
6	C607	869.1	80.7	67.9	6.3	937.0	87.1
7	C702	869.9	80.8	67.9	6.3	937.9	87.1
8	C802	866.9	80.5	67.9	6.3	934.9	86.9



DUBAI HILLS
ESTATE
PARK POINT



2 BEDROOM – 2.2							
LEVEL	UNIT NUMBER	AREA					
		SUITE		BALCONY		TOTAL	
		Ft²	m²	Ft²	m²	Ft²	m²
BLOCK B							
7	B704	866.3	80.5	68.4	6.4	934.6	86.8
8	B804	866.3	80.5	68.4	6.4	934.6	86.8

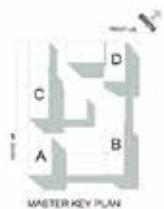


1. All dimensions are in imperial and metric, and measured to structural elements and exclude wall finishes and construction tolerances. 2. All materials, dimensions, and drawings are approximate only. 3. Information is subject to change without notice, at developer's absolute discretion. 4. Actual area may vary from the stated area. 5. Drawings not to scale. 6. All images used are for illustrative purposes only and do not represent the actual size, features, specifications, fittings, and furnishings. 7. The developer reserves the right to make revisions/ alterations, at its absolute discretion, without any liability whatsoever. *Please note that landscaping and swimming pool are not provided by the developer.



1. All dimensions are in imperial and metric, and measured to structural elements and exclude wall finishes and construction tolerances. 2. All materials, dimensions, and drawings are approximate only. 3. Information is subject to change without notice, at developer's absolute discretion. 4. Actual area may vary from the stated area. 5. Drawings not to scale. 6. All images used are for illustrative purposes only and do not represent the actual size, features, specifications, fittings, and furnishings. 7. The developer reserves the right to make revisions/ alterations, at its absolute discretion, without any liability whatsoever. *Please note that landscaping and swimming pool are not provided by the developer.

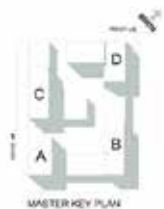
DUBAI HILLS
ESTATE
PARK POINT



2 BEDROOM – 2.2.a									
LEVEL	UNIT NUMBER	AREA							
		SUITE		BALCONY		TOTAL			
		Ft²	m²	Ft²	m²	Ft²	m²		
BLOCK B									
1	B101	918.6	85.3	306.0	28.4	1224.6	113.8		



DUBAI HILLS
ESTATE
PARK POINT



2 BEDROOM – 2.2.b									
LEVEL	UNIT NUMBER	AREA							
		SUITE		BALCONY		TOTAL			
		Ft²	m²	Ft²	m²	Ft²	m²		
BLOCK D									
1	D106	927.5	86.2	69.8	6.5	997.3	92.7		
2	D207	928.5	86.3	69.5	6.5	998.0	92.7		
3	D307	928.5	86.3	69.5	6.5	998.0	92.7		
4	D407	928.5	86.3	69.5	6.5	998.0	92.7		
5	D507	928.5	86.3	69.5	6.5	998.0	92.7		
6	D607	928.5	86.3	69.5	6.5	998.0	92.7		
7	D706	928.9	86.3	69.5	6.5	998.5	92.8		
8	D806	928.9	86.3	69.5	6.5	998.5	92.8		

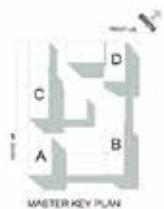


1. All dimensions are in imperial and metric, and measured to structural elements and exclude wall finishes and construction tolerances. 2. All materials, dimensions, and drawings are approximate only. 3. Information is subject to change without notice, at developer's absolute discretion. 4. Actual area may vary from the stated area. 5. Drawings not to scale. 6. All images used are for illustrative purposes only and do not represent the actual size, features, specifications, fittings, and furnishings. 7. The developer reserves the right to make revisions/ alterations, at its absolute discretion, without any liability whatsoever. *Please note that landscaping and swimming pool are not provided by the developer.



1. All dimensions are in imperial and metric, and measured to structural elements and exclude wall finishes and construction tolerances. 2. All materials, dimensions, and drawings are approximate only. 3. Information is subject to change without notice, at developer's absolute discretion. 4. Actual area may vary from the stated area. 5. Drawings not to scale. 6. All images used are for illustrative purposes only and do not represent the actual size, features, specifications, fittings, and furnishings. 7. The developer reserves the right to make revisions/ alterations, at its absolute discretion, without any liability whatsoever. *Please note that landscaping and swimming pool are not provided by the developer.

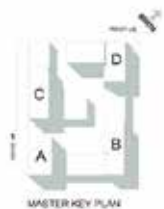
DUBAI HILLS
ESTATE
PARK POINT



2 BEDROOM – 2.3							
LEVEL	UNIT NUMBER	AREA					
		SUITE		BALCONY		TOTAL	
		Ft²	m²	Ft²	m²	Ft²	m²
BLOCK C							
2	C206	1040.7	96.7	93.1	8.7	1133.8	105.3
3	C306	1040.7	96.7	93.1	8.7	1133.8	105.3
4	C406	1040.7	96.7	93.1	8.7	1133.8	105.3
5	C506	1040.7	96.7	93.1	8.7	1133.8	105.3
6	C606	1040.7	96.7	93.1	8.7	1133.8	105.3



DUBAI HILLS
ESTATE
PARK POINT



2 BEDROOM – 2.4							
LEVEL	UNIT NUMBER	AREA					
		SUITE		BALCONY		TOTAL	
		Ft²	m²	Ft²	m²	Ft²	m²
BLOCK A							
2	A206	957.2	88.9	57.4	5.3	1014.6	94.3
3	A306	957.2	88.9	57.4	5.3	1014.6	94.3
4	A406	957.2	88.9	57.4	5.3	1014.6	94.3
5	A506	957.2	88.9	57.4	5.3	1014.6	94.3
6	A606	957.2	88.9	57.4	5.3	1014.6	94.3
7	A706	957.2	88.9	57.4	5.3	1014.6	94.3
8	A806	957.2	88.9	57.4	5.3	1014.6	94.3
9	A905	957.2	88.9	57.4	5.3	1014.6	94.3

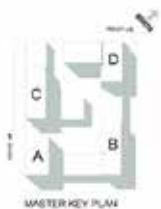


1. All dimensions are in imperial and metric, and measured to structural elements and exclude wall finishes and construction tolerances. 2. All materials, dimensions, and drawings are approximate only. 3. Information is subject to change without notice, at developer's absolute discretion. 4. Actual area may vary from the stated area. 5. Drawings not to scale. 6. All images used are for illustrative purposes only and do not represent the actual size, features, specifications, fittings, and furnishings. 7. The developer reserves the right to make revisions/ alterations, at its absolute discretion, without any liability whatsoever. *Please note that landscaping and swimming pool are not provided by the developer.



1. All dimensions are in imperial and metric, and measured to structural elements and exclude wall finishes and construction tolerances. 2. All materials, dimensions, and drawings are approximate only. 3. Information is subject to change without notice, at developer's absolute discretion. 4. Actual area may vary from the stated area. 5. Drawings not to scale. 6. All images used are for illustrative purposes only and do not represent the actual size, features, specifications, fittings, and furnishings. 7. The developer reserves the right to make revisions/ alterations, at its absolute discretion, without any liability whatsoever. *Please note that landscaping and swimming pool are not provided by the developer.

DUBAI HILLS
ESTATE
PARK POINT

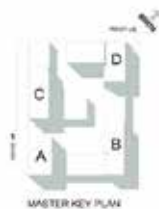


2 BEDROOM – 2.4									
LEVEL	UNIT NUMBER	AREA							
		SUITE		BALCONY		TOTAL			
		Ft²	m²	Ft²	m²	Ft²	m²		
BLOCK B									
2	B203	963.3	89.5	67.7	6.3	1031.0	95.8		
3	B303	963.8	89.5	67.7	6.3	1031.5	95.8		
4	B403	963.3	89.5	67.7	6.3	1031.0	95.8		
5	B503	963.8	89.5	67.7	6.3	1031.5	95.8		
6	B603	963.3	89.5	67.7	6.3	1031.0	95.8		



1. All dimensions are in imperial and metric, and measured to structural elements and exclude wall finishes and construction tolerances. 2. All materials, dimensions, and drawings are approximate only. 3. Information is subject to change without notice, at developer's absolute discretion. 4. Actual area may vary from the stated area. 5. Drawings not to scale. 6. All images used are for illustrative purposes only and do not represent the actual size, features, specifications, fittings, and furnishings. 7. The developer reserves the right to make revisions/ alterations, at its absolute discretion, without any liability whatsoever. *Please note that landscaping and swimming pool are not provided by the developer.

DUBAI HILLS
ESTATE
PARK POINT

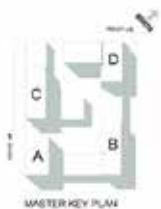


2 BEDROOM – 2.4.a							
LEVEL	UNIT NUMBER	AREA					
		SUITE		BALCONY		TOTAL	
		Ft²	m²	Ft²	m²	Ft²	m²
BLOCK D							
7	D701	1015.0	94.3	73.2	6.8	1088.2	101.1
8	D801	1015.0	94.3	73.2	6.8	1088.2	101.1



1. All dimensions are in imperial and metric, and measured to structural elements and exclude wall finishes and construction tolerances. 2. All materials, dimensions, and drawings are approximate only. 3. Information is subject to change without notice, at developer's absolute discretion. 4. Actual area may vary from the stated area. 5. Drawings not to scale. 6. All images used are for illustrative purposes only and do not represent the actual size, features, specifications, fittings, and furnishings. 7. The developer reserves the right to make revisions/ alterations, at its absolute discretion, without any liability whatsoever. *Please note that landscaping and swimming pool are not provided by the developer.

DUBAI HILLS
ESTATE
PARK POINT

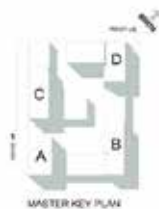


2 BEDROOM – 2.5							
LEVEL	UNIT NUMBER	AREA					
		SUITE		BALCONY		TOTAL	
		Ft²	m²	Ft²	m²	Ft²	m²
BLOCK D							
2	D210	1136.4	105.6	77.4	7.2	1213.7	112.8
3	D310	1136.4	105.6	77.4	7.2	1213.7	112.8
4	D410	1136.4	105.6	77.4	7.2	1213.7	112.8
5	D510	1136.4	105.6	77.4	7.2	1213.7	112.8
6	D610	1136.4	105.6	77.4	7.2	1213.7	112.8



1. All dimensions are in imperial and metric, and measured to structural elements and exclude wall finishes and construction tolerances. 2. All materials, dimensions, and drawings are approximate only. 3. Information is subject to change without notice, at developer's absolute discretion. 4. Actual area may vary from the stated area. 5. Drawings not to scale. 6. All images used are for illustrative purposes only and do not represent the actual size, features, specifications, fittings, and furnishings. 7. The developer reserves the right to make revisions/ alterations, at its absolute discretion, without any liability whatsoever. *Please note that landscaping and swimming pool are not provided by the developer.

DUBAI HILLS
ESTATE
PARK POINT

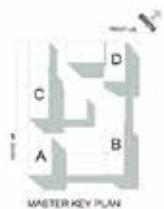


2 BEDROOM – 2.5.a							
LEVEL	UNIT NUMBER	AREA					
		SUITE		BALCONY		TOTAL	
		Ft²	m²	Ft²	m²	Ft²	m²
BLOCK D							
7	D709	1135.7	105.5	77.4	7.2	1213.1	112.7
8	D809	1135.7	105.5	77.4	7.2	1213.1	112.7



1. All dimensions are in imperial and metric, and measured to structural elements and exclude wall finishes and construction tolerances. 2. All materials, dimensions, and drawings are approximate only. 3. Information is subject to change without notice, at developer's absolute discretion. 4. Actual area may vary from the stated area. 5. Drawings not to scale. 6. All images used are for illustrative purposes only and do not represent the actual size, features, specifications, fittings, and furnishings. 7. The developer reserves the right to make revisions/ alterations, at its absolute discretion, without any liability whatsoever. *Please note that landscaping and swimming pool are not provided by the developer.

DUBAI HILLS
ESTATE
PARK POINT

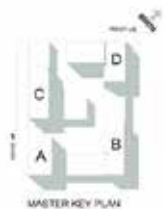


2 BEDROOM – 2.5.b							
LEVEL	UNIT NUMBER	AREA					
		SUITE		BALCONY		TOTAL	
		Ft²	m²	Ft²	m²	Ft²	m²
BLOCK D							
1	D109	1227.2	114.0	541.1	50.3	1768.3	164.3



1. All dimensions are in imperial and metric, and measured to structural elements and exclude wall finishes and construction tolerances. 2. All materials, dimensions, and drawings are approximate only. 3. Information is subject to change without notice, at developer's absolute discretion. 4. Actual area may vary from the stated area. 5. Drawings not to scale. 6. All images used are for illustrative purposes only and do not represent the actual size, features, specifications, fittings, and furnishings. 7. The developer reserves the right to make revisions/ alterations, at its absolute discretion, without any liability whatsoever. *Please note that landscaping and swimming pool are not provided by the developer.

DUBAI HILLS
ESTATE
PARK POINT

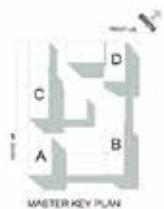


2 BEDROOM – 2.6							
LEVEL	UNIT NUMBER	AREA					
		SUITE		BALCONY		TOTAL	
		Ft²	m²	Ft²	m²	Ft²	m²
BLOCK D							
7	D702	948.2	88.1	146.4	13.6	1094.6	101.7
8	D802	948.5	88.1	146.4	13.6	1094.9	101.7

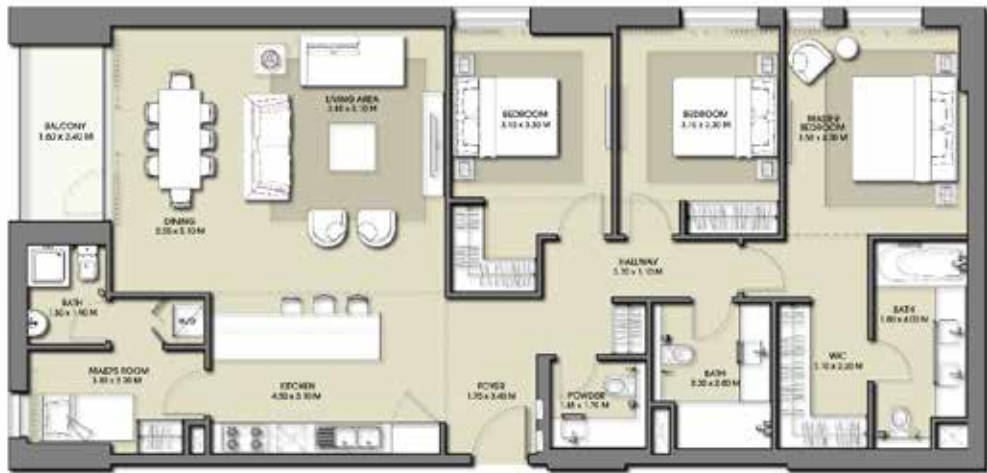


1. All dimensions are in imperial and metric, and measured to structural elements and exclude wall finishes and construction tolerances. 2. All materials, dimensions, and drawings are approximate only. 3. Information is subject to change without notice, at developer's absolute discretion. 4. Actual area may vary from the stated area. 5. Drawings not to scale. 6. All images used are for illustrative purposes only and do not represent the actual size, features, specifications, fittings, and furnishings. 7. The developer reserves the right to make revisions/ alterations, at its absolute discretion, without any liability whatsoever. *Please note that landscaping and swimming pool are not provided by the developer.

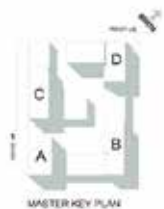
DUBAI HILLS
ESTATE
PARK POINT



3 BEDROOM – 3.0							
LEVEL	UNIT NUMBER	AREA					
		SUITE		BALCONY		TOTAL	
		Ft²	m²	Ft²	m²	Ft²	m²
BLOCK D							
2	D204	1588.8	147.6	60.4	5.6	1649.2	153.2
3	D304	1588.8	147.6	60.4	5.6	1649.2	153.2
4	D404	1588.8	147.6	60.4	5.6	1649.2	153.2
5	D504	1588.8	147.6	60.4	5.6	1649.2	153.2
6	D604	1588.8	147.6	60.4	5.6	1649.2	153.2



DUBAI HILLS
ESTATE
PARK POINT



3 BEDROOM – 3.0.a							
LEVEL	UNIT NUMBER	AREA					
		SUITE		BALCONY		TOTAL	
		Ft ²	m ²	Ft ²	m ²	Ft ²	m ²
BLOCK D							
1	D103	1658.4	154.1	601.4	55.9	2259.8	209.9

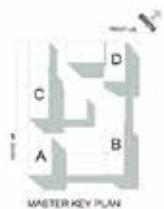


1. All dimensions are in imperial and metric, and measured to structural elements and exclude wall finishes and construction tolerances. 2. All materials, dimensions, and drawings are approximate only. 3. Information is subject to change without notice, at developer's absolute discretion. 4. Actual area may vary from the stated area. 5. Drawings not to scale. 6. All images used are for illustrative purposes only and do not represent the actual size, features, specifications, fittings, and furnishings. 7. The developer reserves the right to make revisions/ alterations, at its absolute discretion, without any liability whatsoever. *Please note that landscaping and swimming pool are not provided by the developer.



1. All dimensions are in imperial and metric, and measured to structural elements and exclude wall finishes and construction tolerances. 2. All materials, dimensions, and drawings are approximate only. 3. Information is subject to change without notice, at developer's absolute discretion. 4. Actual area may vary from the stated area. 5. Drawings not to scale. 6. All images used are for illustrative purposes only and do not represent the actual size, features, specifications, fittings, and furnishings. 7. The developer reserves the right to make revisions/ alterations, at its absolute discretion, without any liability whatsoever. *Please note that landscaping and swimming pool are not provided by the developer.

DUBAI HILLS
ESTATE
PARK POINT



3 BEDROOM – 3.0.b							
LEVEL	UNIT NUMBER	AREA					
		SUITE		BALCONY		TOTAL	
		Ft²	m²	Ft²	m²	Ft²	m²

BLOCK D

7	D703	1589.6	147.7	59.5	5.5	1649.2	153.2
8	D803	1589.6	147.7	59.5	5.5	1649.2	153.2



LEVEL 01



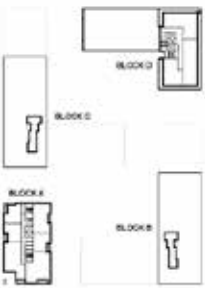
LEVEL 02 - 06



LEVEL 07

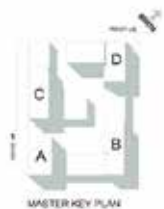


LEVEL 08



LEVEL 09

DUBAI HILLS
ESTATE
PARK POINT



3 BEDROOM – 3.0.c							
LEVEL	UNIT NUMBER	AREA					
		SUITE		BALCONY		TOTAL	
		Ft²	m²	Ft²	m²	Ft²	m²

BLOCK B

2	B204	1490.9	138.5	113.2	10.5	1604.2	149.0
	B211	1501.9	139.5	113.2	10.5	1615.1	150.1
3	B304	1490.9	138.5	113.2	10.5	1604.2	149.0
	B311	1501.9	139.5	113.2	10.5	1615.1	150.1
4	B404	1490.9	138.5	113.2	10.5	1604.2	149.0
	B411	1501.9	139.5	113.2	10.5	1615.1	150.1
5	B504	1490.9	138.5	113.2	10.5	1604.2	149.0
	B511	1501.9	139.5	113.2	10.5	1615.1	150.1
6	B604	1490.9	138.5	113.2	10.5	1604.2	149.0
	B611	1501.9	139.5	113.2	10.5	1615.1	150.1



LEVEL 01



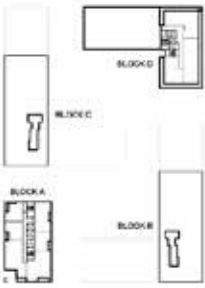
LEVEL 02 - 06



LEVEL 07



LEVEL 08



LEVEL 09

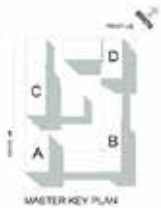


1. All dimensions are in imperial and metric, and measured to structural elements and exclude wall finishes and construction tolerances. 2. All materials, dimensions, and drawings are approximate only. 3. Information is subject to change without notice, at developer's absolute discretion. 4. Actual area may vary from the stated area. 5. Drawings not to scale. 6. All images used are for illustrative purposes only and do not represent the actual size, features, specifications, fittings, and furnishings. 7. The developer reserves the right to make revisions/ alterations, at its absolute discretion, without any liability whatsoever. *Please note that landscaping and swimming pool are not provided by the developer.



1. All dimensions are in imperial and metric, and measured to structural elements and exclude wall finishes and construction tolerances. 2. All materials, dimensions, and drawings are approximate only. 3. Information is subject to change without notice, at developer's absolute discretion. 4. Actual area may vary from the stated area. 5. Drawings not to scale. 6. All images used are for illustrative purposes only and do not represent the actual size, features, specifications, fittings, and furnishings. 7. The developer reserves the right to make revisions/ alterations, at its absolute discretion, without any liability whatsoever. *Please note that landscaping and swimming pool are not provided by the developer.

DUBAI HILLS
ESTATE
PARK POINT

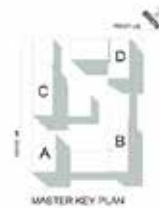


3 BEDROOM – 3.0.c							
LEVEL	UNIT NUMBER	AREA					
		SUITE		BALCONY		TOTAL	
		Ft²	m²	Ft²	m²	Ft²	m²
BLOCK C							
2	C203	1491.8	138.6	113.2	10.5	1605.0	149.1
	C212	1501.1	139.5	118.3	11.0	1619.4	150.5
3	C303	1491.8	138.6	113.2	10.5	1605.0	149.1
	C312	1501.1	139.5	112.9	10.5	1614.1	150.0
4	C403	1491.8	138.6	113.2	10.5	1605.0	149.1
	C412	1501.1	139.5	118.3	11.0	1619.4	150.5
5	C503	1491.8	138.6	113.2	10.5	1605.0	149.1
	C512	1501.1	139.5	112.9	10.5	1614.1	150.0
6	C603	1491.8	138.6	113.2	10.5	1605.0	149.1
	C612	1501.1	139.5	118.3	11.0	1619.4	150.5



1. All dimensions are in imperial and metric, and measured to structural elements and exclude wall finishes and construction tolerances. 2. All materials, dimensions, and drawings are approximate only. 3. Information is subject to change without notice, at developer's absolute discretion. 4. Actual area may vary from the stated area. 5. Drawings not to scale. 6. All images used are for illustrative purposes only and do not represent the actual size, features, specifications, fittings, and furnishings. 7. The developer reserves the right to make revisions/ alterations, at its absolute discretion, without any liability whatsoever. *Please note that landscaping and swimming pool are not provided by the developer.

DUBAI HILLS
ESTATE
PARK POINT

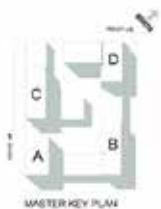


3 BEDROOM – 3.0.d							
LEVEL	UNIT NUMBER	AREA					
		SUITE		BALCONY		TOTAL	
		Ft²	m²	Ft²	m²	Ft²	m²
BLOCK B							
1	B104	1535.7	142.7	389.7	36.2	1925.4	178.9



1. All dimensions are in imperial and metric, and measured to structural elements and exclude wall finishes and construction tolerances. 2. All materials, dimensions, and drawings are approximate only. 3. Information is subject to change without notice, at developer's absolute discretion. 4. Actual area may vary from the stated area. 5. Drawings not to scale. 6. All images used are for illustrative purposes only and do not represent the actual size, features, specifications, fittings, and furnishings. 7. The developer reserves the right to make revisions/ alterations, at its absolute discretion, without any liability whatsoever. *Please note that landscaping and swimming pool are not provided by the developer.

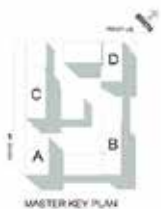
DUBAI HILLS
ESTATE
PARK POINT



3 BEDROOM – 3.0.e							
LEVEL	UNIT NUMBER	AREA					
		SUITE		BALCONY		TOTAL	
		Ft²	m²	Ft²	m²	Ft²	m²
BLOCK C							
1	C107	1536.0	142.7	246.7	22.9	1782.7	165.6



DUBAI HILLS
ESTATE
PARK POINT



3 BEDROOM – 3.0.f							
LEVEL	UNIT NUMBER	AREA					
		SUITE		BALCONY		TOTAL	
		Ft²	m²	Ft²	m²	Ft²	m²
BLOCK B							
1	B111	1501.3	139.5	594.2	55.2	2095.4	194.7

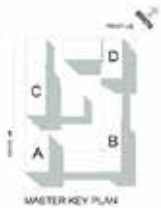


1. All dimensions are in imperial and metric, and measured to structural elements and exclude wall finishes and construction tolerances. 2. All materials, dimensions, and drawings are approximate only. 3. Information is subject to change without notice, at developer's absolute discretion. 4. Actual area may vary from the stated area. 5. Drawings not to scale. 6. All images used are for illustrative purposes only and do not represent the actual size, features, specifications, fittings, and furnishings. 7. The developer reserves the right to make revisions/ alterations, at its absolute discretion, without any liability whatsoever. *Please note that landscaping and swimming pool are not provided by the developer.



1. All dimensions are in imperial and metric, and measured to structural elements and exclude wall finishes and construction tolerances. 2. All materials, dimensions, and drawings are approximate only. 3. Information is subject to change without notice, at developer's absolute discretion. 4. Actual area may vary from the stated area. 5. Drawings not to scale. 6. All images used are for illustrative purposes only and do not represent the actual size, features, specifications, fittings, and furnishings. 7. The developer reserves the right to make revisions/ alterations, at its absolute discretion, without any liability whatsoever. *Please note that landscaping and swimming pool are not provided by the developer.

DUBAI HILLS
ESTATE
PARK POINT

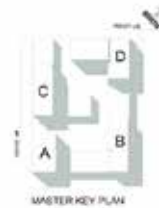


3 BEDROOM – 3.1							
LEVEL	UNIT NUMBER	AREA					
		SUITE		BALCONY		TOTAL	
		Ft ²	m ²	Ft ²	m ²	Ft ²	m ²

BLOCK D							
2	D209	1526.3	141.8	76.6	7.1	1603.0	148.9
3	D309	1526.3	141.8	76.6	7.1	1603.0	148.9
4	D409	1526.3	141.8	76.6	7.1	1603.0	148.9
5	D509	1526.3	141.8	76.6	7.1	1603.0	148.9
6	D609	1526.3	141.8	76.6	7.1	1603.0	148.9
7	D708	1526.3	141.8	76.6	7.1	1603.0	148.9
8	D808	1526.3	141.8	76.6	7.1	1603.0	148.9



DUBAI HILLS
ESTATE
PARK POINT



3 BEDROOM – 3.1.a							
LEVEL	UNIT NUMBER	AREA					
		SUITE		BALCONY		TOTAL	
		Ft ²	m ²	Ft ²	m ²	Ft ²	m ²

BLOCK D							
---------	--	--	--	--	--	--	--

1	D108	1526.3	141.8	288.2	26.8	1814.5	168.6
---	------	--------	-------	-------	------	--------	-------

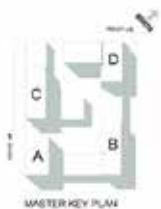


1. All dimensions are in imperial and metric, and measured to structural elements and exclude wall finishes and construction tolerances. 2. All materials, dimensions, and drawings are approximate only. 3. Information is subject to change without notice, at developer's absolute discretion. 4. Actual area may vary from the stated area. 5. Drawings not to scale. 6. All images used are for illustrative purposes only and do not represent the actual size, features, specifications, fittings, and furnishings. 7. The developer reserves the right to make revisions/ alterations, at its absolute discretion, without any liability whatsoever. *Please note that landscaping and swimming pool are not provided by the developer.



1. All dimensions are in imperial and metric, and measured to structural elements and exclude wall finishes and construction tolerances. 2. All materials, dimensions, and drawings are approximate only. 3. Information is subject to change without notice, at developer's absolute discretion. 4. Actual area may vary from the stated area. 5. Drawings not to scale. 6. All images used are for illustrative purposes only and do not represent the actual size, features, specifications, fittings, and furnishings. 7. The developer reserves the right to make revisions/ alterations, at its absolute discretion, without any liability whatsoever. *Please note that landscaping and swimming pool are not provided by the developer.

DUBAI HILLS
ESTATE
PARK POINT



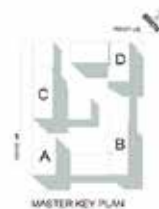
3 BEDROOM – 3.2								
LEVEL	UNIT NUMBER	AREA						
		SUITE		BALCONY		TOTAL		
		Ft²	m²	Ft²	m²	Ft²	m²	
BLOCK B								
1	B110	1298.6	120.6	74.6	6.9	1373.2	127.6	
2	B210	1298.6	120.6	74.4	6.9	1372.9	127.6	
3	B310	1298.6	120.6	74.4	6.9	1372.9	127.6	
4	B410	1298.6	120.6	74.4	6.9	1372.9	127.6	
5	B510	1298.6	120.6	74.4	6.9	1372.9	127.6	
6	B610	1298.6	120.6	74.4	6.9	1372.9	127.6	

BLOCK C								
2	C204	1303.3	121.1	75.1	7.0	1378.4	128.1	
3	C304	1303.3	121.1	75.1	7.0	1378.4	128.1	
4	C404	1303.3	121.1	75.1	7.0	1378.4	128.1	
5	C504	1303.3	121.1	75.1	7.0	1378.4	128.1	
6	C604	1303.3	121.1	75.1	7.0	1378.4	128.1	



1. All dimensions are in imperial and metric, and measured to structural elements and exclude wall finishes and construction tolerances. 2. All materials, dimensions, and drawings are approximate only. 3. Information is subject to change without notice, at developer's absolute discretion. 4. Actual area may vary from the stated area. 5. Drawings not to scale. 6. All images used are for illustrative purposes only and do not represent the actual size, features, specifications, fittings, and furnishings. 7. The developer reserves the right to make revisions/ alterations, at its absolute discretion, without any liability whatsoever. *Please note that landscaping and swimming pool are not provided by the developer.

DUBAI HILLS
ESTATE
PARK POINT

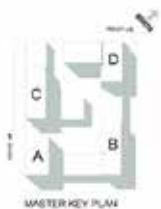


3 BEDROOM – 3.2.a							
LEVEL	UNIT NUMBER	AREA					
		SUITE		BALCONY		TOTAL	
		Ft²	m²	Ft²	m²	Ft²	m²
BLOCK B							
1	B112	1347.0	125.1	361.9	33.6	1708.9	158.8



1. All dimensions are in imperial and metric, and measured to structural elements and exclude wall finishes and construction tolerances. 2. All materials, dimensions, and drawings are approximate only. 3. Information is subject to change without notice, at developer's absolute discretion. 4. Actual area may vary from the stated area. 5. Drawings not to scale. 6. All images used are for illustrative purposes only and do not represent the actual size, features, specifications, fittings, and furnishings. 7. The developer reserves the right to make revisions/ alterations, at its absolute discretion, without any liability whatsoever. *Please note that landscaping and swimming pool are not provided by the developer.

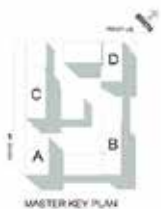
DUBAI HILLS
ESTATE
PARK POINT



3 BEDROOM – 3.2.b							
LEVEL	UNIT NUMBER	AREA					
		SUITE		BALCONY		TOTAL	
		Ft²	m²	Ft²	m²	Ft²	m²
BLOCK B							
1	B108	1398.1	129.9	79.2	7.4	1477.4	137.3
2	B208	1398.2	129.9	79.2	7.4	1477.5	137.3
3	B308	1398.2	129.9	79.2	7.4	1477.5	137.3
4	B408	1398.2	129.9	79.2	7.4	1477.5	137.3
5	B508	1398.2	129.9	79.2	7.4	1477.5	137.3
6	B608	1398.2	129.9	79.2	7.4	1477.5	137.3



DUBAI HILLS
ESTATE
PARK POINT



3 BEDROOM – 3.3							
LEVEL	UNIT NUMBER	AREA					
		SUITE		BALCONY		TOTAL	
		Ft²	m²	Ft²	m²	Ft²	m²
BLOCK A							
1	A101	1207.6	112.2	145.0	13.5	1352.6	125.7

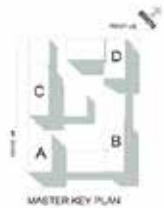


1. All dimensions are in imperial and metric, and measured to structural elements and exclude wall finishes and construction tolerances. 2. All materials, dimensions, and drawings are approximate only. 3. Information is subject to change without notice, at developer's absolute discretion. 4. Actual area may vary from the stated area. 5. Drawings not to scale. 6. All images used are for illustrative purposes only and do not represent the actual size, features, specifications, fittings, and furnishings. 7. The developer reserves the right to make revisions/ alterations, at its absolute discretion, without any liability whatsoever. *Please note that landscaping and swimming pool are not provided by the developer.



1. All dimensions are in imperial and metric, and measured to structural elements and exclude wall finishes and construction tolerances. 2. All materials, dimensions, and drawings are approximate only. 3. Information is subject to change without notice, at developer's absolute discretion. 4. Actual area may vary from the stated area. 5. Drawings not to scale. 6. All images used are for illustrative purposes only and do not represent the actual size, features, specifications, fittings, and furnishings. 7. The developer reserves the right to make revisions/ alterations, at its absolute discretion, without any liability whatsoever. *Please note that landscaping and swimming pool are not provided by the developer.

DUBAI HILLS
ESTATE
PARK POINT

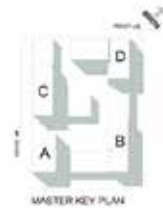


3 BEDROOM – 3.3.a							
LEVEL	UNIT NUMBER	AREA					
		SUITE		BALCONY		TOTAL	
		Ft²	m²	Ft²	m²	Ft²	m²
BLOCK C							
7	C706	1189.3	110.5	137.0	12.7	1326.3	123.2
8	C806	1189.3	110.5	137.0	12.7	1326.3	123.2



1. All dimensions are in imperial and metric, and measured to structural elements and exclude wall finishes and construction tolerances. 2. All materials, dimensions, and drawings are approximate only. 3. Information is subject to change without notice, at developer's absolute discretion. 4. Actual area may vary from the stated area. 5. Drawings not to scale. 6. All images used are for illustrative purposes only and do not represent the actual size, features, specifications, fittings, and furnishings. 7. The developer reserves the right to make revisions/ alterations, at its absolute discretion, without any liability whatsoever. *Please note that landscaping and swimming pool are not provided by the developer.

DUBAI HILLS
ESTATE
PARK POINT

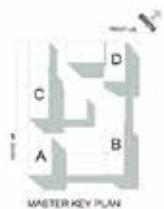


3 BEDROOM – 3.4							
LEVEL	UNIT NUMBER	AREA					
		SUITE		BALCONY		TOTAL	
		Ft²	m²	Ft²	m²	Ft²	m²
BLOCK A							
3	A303	1487.4	138.2	80.4	7.5	1567.8	145.7
5	A503	1487.4	138.2	80.4	7.5	1567.8	145.7
7	A703	1487.4	138.2	80.4	7.5	1567.8	145.7



1. All dimensions are in imperial and metric, and measured to structural elements and exclude wall finishes and construction tolerances. 2. All materials, dimensions, and drawings are approximate only. 3. Information is subject to change without notice, at developer's absolute discretion. 4. Actual area may vary from the stated area. 5. Drawings not to scale. 6. All images used are for illustrative purposes only and do not represent the actual size, features, specifications, fittings, and furnishings. 7. The developer reserves the right to make revisions/ alterations, at its absolute discretion, without any liability whatsoever. *Please note that landscaping and swimming pool are not provided by the developer.

DUBAI HILLS
ESTATE
PARK POINT



3 BEDROOM – 3.4.a							
LEVEL	UNIT NUMBER	AREA					
		SUITE		BALCONY		TOTAL	
		Ft²	m²	Ft²	m²	Ft²	m²

BLOCK A

2	A203	1486.7	138.1	80.4	7.5	1567.1	145.6
4	A403	1486.7	138.1	80.4	7.5	1567.1	145.6
6	A603	1486.7	138.1	80.4	7.5	1567.1	145.6



LEVEL 01



LEVEL 02 - 06



LEVEL 07

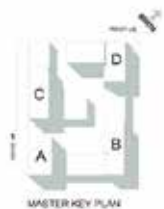


LEVEL 08



LEVEL 09

DUBAI HILLS
ESTATE
PARK POINT



3 BEDROOM – 3.5							
LEVEL	UNIT NUMBER	AREA					
		SUITE		BALCONY		TOTAL	
		Ft²	m²	Ft²	m²	Ft²	m²

BLOCK C

7	C701	1350.2	125.4	158.8	14.8	1509.0	140.2
---	------	--------	-------	-------	------	--------	-------



LEVEL 01



LEVEL 02 - 06



LEVEL 07



LEVEL 08



LEVEL 09

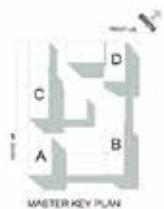


1. All dimensions are in imperial and metric, and measured to structural elements and exclude wall finishes and construction tolerances. 2. All materials, dimensions, and drawings are approximate only. 3. Information is subject to change without notice, at developer's absolute discretion. 4. Actual area may vary from the stated area. 5. Drawings not to scale. 6. All images used are for illustrative purposes only and do not represent the actual size, features, specifications, fittings, and furnishings. 7. The developer reserves the right to make revisions/ alterations, at its absolute discretion, without any liability whatsoever. *Please note that landscaping and swimming pool are not provided by the developer.



1. All dimensions are in imperial and metric, and measured to structural elements and exclude wall finishes and construction tolerances. 2. All materials, dimensions, and drawings are approximate only. 3. Information is subject to change without notice, at developer's absolute discretion. 4. Actual area may vary from the stated area. 5. Drawings not to scale. 6. All images used are for illustrative purposes only and do not represent the actual size, features, specifications, fittings, and furnishings. 7. The developer reserves the right to make revisions/ alterations, at its absolute discretion, without any liability whatsoever. *Please note that landscaping and swimming pool are not provided by the developer.

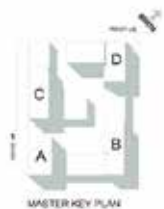
DUBAI HILLS
ESTATE
PARK POINT



3 BEDROOM – 3.5.a							
LEVEL	UNIT NUMBER	AREA					
		SUITE		BALCONY		TOTAL	
		Ft²	m²	Ft²	m²	Ft²	m²
BLOCK C							
1	C101	1406.6	130.7	471.1	43.8	1877.8	174.5



DUBAI HILLS
ESTATE
PARK POINT



3 BEDROOM – 3.5.b							
LEVEL	UNIT NUMBER	AREA					
		SUITE		BALCONY		TOTAL	
		Ft²	m²	Ft²	m²	Ft²	m²
BLOCK C							
8	C801	1350.2	125.4	158.9	14.8	1509.1	140.2

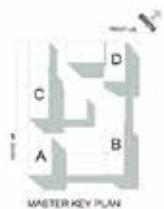


1. All dimensions are in imperial and metric, and measured to structural elements and exclude wall finishes and construction tolerances. 2. All materials, dimensions, and drawings are approximate only. 3. Information is subject to change without notice, at developer's absolute discretion. 4. Actual area may vary from the stated area. 5. Drawings not to scale. 6. All images used are for illustrative purposes only and do not represent the actual size, features, specifications, fittings, and furnishings. 7. The developer reserves the right to make revisions/ alterations, at its absolute discretion, without any liability whatsoever. *Please note that landscaping and swimming pool are not provided by the developer.



1. All dimensions are in imperial and metric, and measured to structural elements and exclude wall finishes and construction tolerances. 2. All materials, dimensions, and drawings are approximate only. 3. Information is subject to change without notice, at developer's absolute discretion. 4. Actual area may vary from the stated area. 5. Drawings not to scale. 6. All images used are for illustrative purposes only and do not represent the actual size, features, specifications, fittings, and furnishings. 7. The developer reserves the right to make revisions/ alterations, at its absolute discretion, without any liability whatsoever. *Please note that landscaping and swimming pool are not provided by the developer.

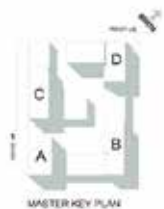
DUBAI HILLS
ESTATE
PARK POINT



3 BEDROOM – 3.6							
LEVEL	UNIT NUMBER	AREA					
		SUITE		BALCONY		TOTAL	
		Ft ²	m ²	Ft ²	m ²	Ft ²	m ²
BLOCK B							
7	B701	1176.4	109.3	66.8	6.2	1243.2	115.5
8	B801	1176.4	109.3	66.8	6.2	1243.2	115.5



DUBAI HILLS
ESTATE
PARK POINT



3 BEDROOM – 3.7							
LEVEL	UNIT NUMBER	AREA					
		SUITE		BALCONY		TOTAL	
		Ft²	m²	Ft²	m²	Ft²	m²
BLOCK D							
1	D107	1459.5	135.6	164.9	15.3	1624.4	150.9
2	D208	1459.8	135.6	148.9	13.8	1608.7	149.5
3	D308	1459.8	135.6	148.9	13.8	1608.7	149.5
4	D408	1459.8	135.6	148.9	13.8	1608.7	149.5
5	D508	1459.8	135.6	148.9	13.8	1608.7	149.5
6	D608	1459.8	135.6	148.9	13.8	1608.7	149.5
7	D707	1459.7	135.6	148.8	13.8	1608.5	149.4
8	D807	1459.5	135.6	148.8	13.8	1608.2	149.4

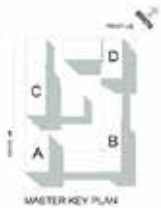


1. All dimensions are in imperial and metric, and measured to structural elements and exclude wall finishes and construction tolerances. 2. All materials, dimensions, and drawings are approximate only. 3. Information is subject to change without notice, at developer's absolute discretion. 4. Actual area may vary from the stated area. 5. Drawings not to scale. 6. All images used are for illustrative purposes only and do not represent the actual size, features, specifications, fittings, and furnishings. 7. The developer reserves the right to make revisions/ alterations, at its absolute discretion, without any liability whatsoever. *Please note that landscaping and swimming pool are not provided by the developer.



1. All dimensions are in imperial and metric, and measured to structural elements and exclude wall finishes and construction tolerances. 2. All materials, dimensions, and drawings are approximate only. 3. Information is subject to change without notice, at developer's absolute discretion. 4. Actual area may vary from the stated area. 5. Drawings not to scale. 6. All images used are for illustrative purposes only and do not represent the actual size, features, specifications, fittings, and furnishings. 7. The developer reserves the right to make revisions/ alterations, at its absolute discretion, without any liability whatsoever. *Please note that landscaping and swimming pool are not provided by the developer.

DUBAI HILLS
ESTATE
PARK POINT



3 BEDROOM – 3.8

LEVEL	UNIT NUMBER	AREA					
		SUITE		BALCONY		TOTAL	
		Ft ²	m ²	Ft ²	m ²	Ft ²	m ²

BLOCK B

7	B702	1446.7	134.4	578.8	53.8	2025.5	188.2
---	------	--------	-------	-------	------	--------	-------



LEVEL 01



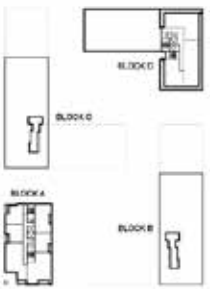
LEVEL 02 - 06



LEVEL 07

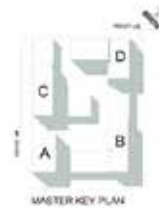


LEVEL 08



LEVEL 09

DUBAI HILLS
ESTATE
PARK POINT



3 BEDROOM – 3.8

LEVEL	UNIT NUMBER	AREA					
		SUITE		BALCONY		TOTAL	
		Ft ²	m ²	Ft ²	m ²	Ft ²	m ²

BLOCK C

7	C705	1451.3	134.8	579.4	53.8	2030.7	188.7
---	------	--------	-------	-------	------	--------	-------



LEVEL 01



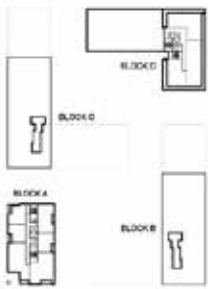
LEVEL 02 - 06



LEVEL 07



LEVEL 08



LEVEL 09

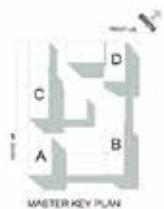


1. All dimensions are in imperial and metric, and measured to structural elements and exclude wall finishes and construction tolerances. 2. All materials, dimensions, and drawings are approximate only. 3. Information is subject to change without notice, at developer's absolute discretion. 4. Actual area may vary from the stated area. 5. Drawings not to scale. 6. All images used are for illustrative purposes only and do not represent the actual size, features, specifications, fittings, and furnishings. 7. The developer reserves the right to make revisions/ alterations, at its absolute discretion, without any liability whatsoever. *Please note that landscaping and swimming pool are not provided by the developer.



1. All dimensions are in imperial and metric, and measured to structural elements and exclude wall finishes and construction tolerances. 2. All materials, dimensions, and drawings are approximate only. 3. Information is subject to change without notice, at developer's absolute discretion. 4. Actual area may vary from the stated area. 5. Drawings not to scale. 6. All images used are for illustrative purposes only and do not represent the actual size, features, specifications, fittings, and furnishings. 7. The developer reserves the right to make revisions/ alterations, at its absolute discretion, without any liability whatsoever. *Please note that landscaping and swimming pool are not provided by the developer.

DUBAI HILLS
ESTATE
PARK POINT

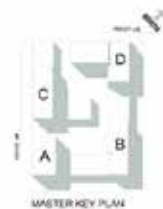


3 BEDROOM – 3.8.a							
LEVEL	UNIT NUMBER	AREA					
		SUITE		BALCONY		TOTAL	
		Ft ²	m ²	Ft ²	m ²	Ft ²	m ²
BLOCK B							
8	B802	1446.7	134.4	176.7	16.4	1623.4	150.8



1. All dimensions are in imperial and metric, and measured to structural elements and exclude wall finishes and construction tolerances. 2. All materials, dimensions, and drawings are approximate only. 3. Information is subject to change without notice, at developer's absolute discretion. 4. Actual area may vary from the stated area. 5. Drawings not to scale. 6. All images used are for illustrative purposes only and do not represent the actual size, features, specifications, fittings, and furnishings. 7. The developer reserves the right to make revisions/ alterations, at its absolute discretion, without any liability whatsoever. *Please note that landscaping and swimming pool are not provided by the developer.

DUBAI HILLS
ESTATE
PARK POINT

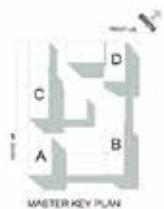


3 BEDROOM – 3.8.a							
LEVEL	UNIT NUMBER	AREA					
		SUITE		BALCONY		TOTAL	
		Ft²	m²	Ft²	m²	Ft²	m²
BLOCK C							
8	C805	1451.3	134.8	169.2	15.7	1620.5	150.6



1. All dimensions are in imperial and metric, and measured to structural elements and exclude wall finishes and construction tolerances. 2. All materials, dimensions, and drawings are approximate only. 3. Information is subject to change without notice, at developer's absolute discretion. 4. Actual area may vary from the stated area. 5. Drawings not to scale. 6. All images used are for illustrative purposes only and do not represent the actual size, features, specifications, fittings, and furnishings. 7. The developer reserves the right to make revisions/ alterations, at its absolute discretion, without any liability whatsoever. *Please note that landscaping and swimming pool are not provided by the developer.

DUBAI HILLS
ESTATE
PARK POINT

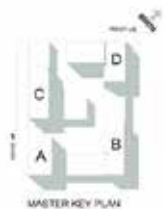


3 BEDROOM – 3.9							
LEVEL	UNIT NUMBER	AREA					
		SUITE		BALCONY		TOTAL	
		Ft²	m²	Ft²	m²	Ft²	m²
BLOCK B							
1	B109	1295.8	120.4	68.1	6.3	1363.9	126.7
2	B209	1296.0	120.4	68.1	6.3	1364.1	126.7
3	B309	1296.0	120.4	68.1	6.3	1364.1	126.7
4	B409	1296.0	120.4	68.1	6.3	1364.1	126.7
5	B509	1296.0	120.4	68.1	6.3	1364.1	126.7
6	B609	1296.0	120.4	68.1	6.3	1364.1	126.7



1. All dimensions are in imperial and metric, and measured to structural elements and exclude wall finishes and construction tolerances. 2. All materials, dimensions, and drawings are approximate only. 3. Information is subject to change without notice, at developer's absolute discretion. 4. Actual area may vary from the stated area. 5. Drawings not to scale. 6. All images used are for illustrative purposes only and do not represent the actual size, features, specifications, fittings, and furnishings. 7. The developer reserves the right to make revisions/ alterations, at its absolute discretion, without any liability whatsoever. *Please note that landscaping and swimming pool are not provided by the developer.

DUBAI HILLS
ESTATE
PARK POINT

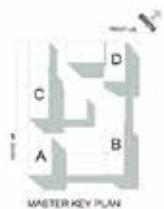


3 BEDROOM – 3.9							
LEVEL	UNIT NUMBER	AREA					
		SUITE		BALCONY		TOTAL	
		Ft²	m²	Ft²	m²	Ft²	m²
BLOCK B							
7	B703	1295.9	120.4	68.5	6.4	1364.3	126.8
8	B803	1295.9	120.4	68.5	6.4	1364.3	126.8



1. All dimensions are in imperial and metric, and measured to structural elements and exclude wall finishes and construction tolerances. 2. All materials, dimensions, and drawings are approximate only. 3. Information is subject to change without notice, at developer's absolute discretion. 4. Actual area may vary from the stated area. 5. Drawings not to scale. 6. All images used are for illustrative purposes only and do not represent the actual size, features, specifications, fittings, and furnishings. 7. The developer reserves the right to make revisions/ alterations, at its absolute discretion, without any liability whatsoever. *Please note that landscaping and swimming pool are not provided by the developer.

DUBAI HILLS
ESTATE
PARK POINT

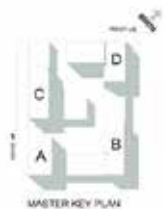


3 BEDROOM – 3.10									
LEVEL	UNIT NUMBER	AREA							
		SUITE		BALCONY		TOTAL			
		Ft ²	m ²	Ft ²	m ²	Ft ²	m ²	Ft ²	m ²
BLOCK B									
7	B705	1358.4	126.2	315.2	29.3	1673.6	155.5		

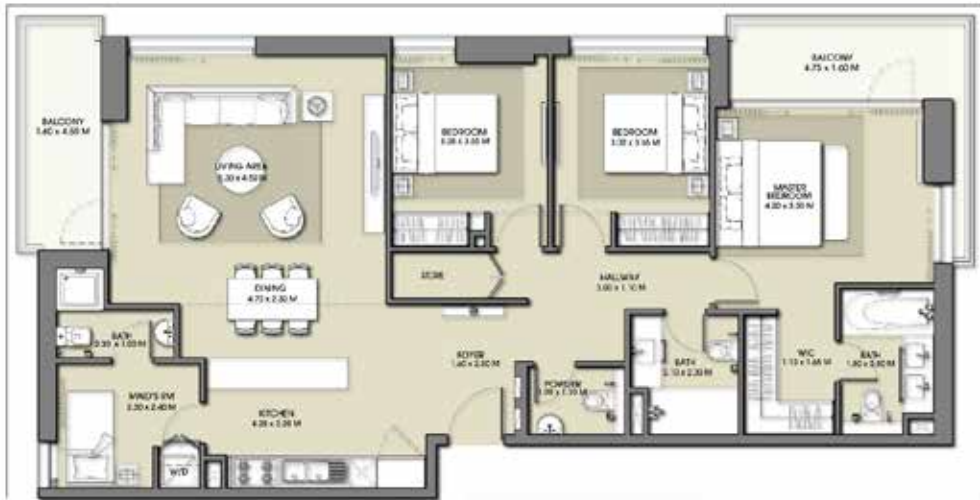


1. All dimensions are in imperial and metric, and measured to structural elements and exclude wall finishes and construction tolerances. 2. All materials, dimensions, and drawings are approximate only. 3. Information is subject to change without notice, at developer's absolute discretion. 4. Actual area may vary from the stated area. 5. Drawings not to scale. 6. All images used are for illustrative purposes only and do not represent the actual size, features, specifications, fittings, and furnishings. 7. The developer reserves the right to make revisions/ alterations, at its absolute discretion, without any liability whatsoever. *Please note that landscaping and swimming pool are not provided by the developer.

DUBAI HILLS
ESTATE
PARK POINT

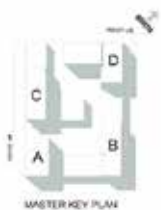


3 BEDROOM – 3.10.a							
LEVEL	UNIT NUMBER	AREA					
		SUITE		BALCONY		TOTAL	
		Ft²	m²	Ft²	m²	Ft²	m²
BLOCK B							
8	B805	1358.4	126.2	182.6	17.0	1541.0	143.2



1. All dimensions are in imperial and metric, and measured to structural elements and exclude wall finishes and construction tolerances. 2. All materials, dimensions, and drawings are approximate only. 3. Information is subject to change without notice, at developer's absolute discretion. 4. Actual area may vary from the stated area. 5. Drawings not to scale. 6. All images used are for illustrative purposes only and do not represent the actual size, features, specifications, fittings, and furnishings. 7. The developer reserves the right to make revisions/ alterations, at its absolute discretion, without any liability whatsoever. *Please note that landscaping and swimming pool are not provided by the developer.

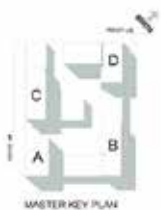
DUBAI HILLS
ESTATE
PARK POINT



2 BEDROOM – A.1							
LEVEL	UNIT NUMBER	AREA					
		SUITE		BALCONY		TOTAL	
		Ft²	m²	Ft²	m²	Ft²	m²
BLOCK D							
9	D901	1254.8	116.6	706.9	65.7	1961.6	182.2



DUBAI HILLS
ESTATE
PARK POINT



3 BEDROOM – A.2							
LEVEL	UNIT NUMBER	AREA					
		SUITE		BALCONY		TOTAL	
		Ft ²	m ²	Ft ²	m ²	Ft ²	m ²
BLOCK D							
9	D902	1338.2	124.3	548.1	50.9	1886.3	175.2

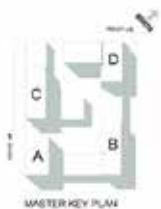


1. All dimensions are in imperial and metric, and measured to structural elements and exclude wall finishes and construction tolerances. 2. All materials, dimensions, and drawings are approximate only. 3. Information is subject to change without notice, at developer's absolute discretion. 4. Actual area may vary from the stated area. 5. Drawings not to scale. 6. All images used are for illustrative purposes only and do not represent the actual size, features, specifications, fittings, and furnishings. 7. The developer reserves the right to make revisions/ alterations, at its absolute discretion, without any liability whatsoever. *Please note that landscaping and swimming pool are not provided by the developer.



1. All dimensions are in imperial and metric, and measured to structural elements and exclude wall finishes and construction tolerances. 2. All materials, dimensions, and drawings are approximate only. 3. Information is subject to change without notice, at developer's absolute discretion. 4. Actual area may vary from the stated area. 5. Drawings not to scale. 6. All images used are for illustrative purposes only and do not represent the actual size, features, specifications, fittings, and furnishings. 7. The developer reserves the right to make revisions/ alterations, at its absolute discretion, without any liability whatsoever. *Please note that landscaping and swimming pool are not provided by the developer.

DUBAI HILLS
ESTATE
PARK POINT

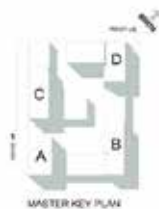


2 BEDROOM – A.3							
LEVEL	UNIT NUMBER	AREA					
		SUITE		BALCONY		TOTAL	
		Ft²	m²	Ft²	m²	Ft²	m²
BLOCK D							
9	D903	899.0	83.5	419.8	39.0	1318.8	122.5



1. All dimensions are in imperial and metric, and measured to structural elements and exclude wall finishes and construction tolerances. 2. All materials, dimensions, and drawings are approximate only. 3. Information is subject to change without notice, at developer's absolute discretion. 4. Actual area may vary from the stated area. 5. Drawings not to scale. 6. All images used are for illustrative purposes only and do not represent the actual size, features, specifications, fittings, and furnishings. 7. The developer reserves the right to make revisions/ alterations, at its absolute discretion, without any liability whatsoever. *Please note that landscaping and swimming pool are not provided by the developer.

DUBAI HILLS
ESTATE
PARK POINT

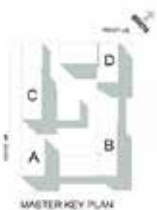


DUPLEX (LOWER LEVEL)							
LEVEL	UNIT NUMBER	AREA					
		SUITE		BALCONY		TOTAL	
		Ft²	m²	Ft²	m²	Ft²	m²
BLOCK A							
8	A803	2422.7	225.1	347.9	32.3	2770.5	257.4



1. All dimensions are in imperial and metric, and measured to structural elements and exclude wall finishes and construction tolerances. 2. All materials, dimensions, and drawings are approximate only. 3. Information is subject to change without notice, at developer's absolute discretion. 4. Actual area may vary from the stated area. 5. Drawings not to scale. 6. All images used are for illustrative purposes only and do not represent the actual size, features, specifications, fittings, and furnishings. 7. The developer reserves the right to make revisions/ alterations, at its absolute discretion, without any liability whatsoever. *Please note that landscaping and swimming pool are not provided by the developer.

DUBAI HILLS
ESTATE
PARK POINT



Duplex (Upper Level)							
Level	Unit Number	Area					
		Suite		Balcony		Total	
		Ft²	m²	Ft²	m²	Ft²	m²
Block A							
8	A803	2422.7	225.1	347.9	32.3	2770.5	257.4



24/7 Sales Contact No.
+971 4248 3400

More Details are Available in
<http://www.tanamiproperties.com/>



1. All dimensions are in imperial and metric, and measured to structural elements and exclude wall finishes and construction tolerances. 2. All materials, dimensions, and drawings are approximate only. 3. Information is subject to change without notice, at developer's absolute discretion. 4. Actual area may vary from the stated area. 5. Drawings not to scale. 6. All images used are for illustrative purposes only and do not represent the actual size, features, specifications, fittings, and furnishings. 7. The developer reserves the right to make revisions/ alterations, at its absolute discretion, without any liability whatsoever. *Please note that landscaping and swimming pool are not provided by the developer.



+971 4 248 3400

+971 55 162 3236

info@tanamiproperties.ae

www.tanamiproperties.com/Projects/Park-Point