

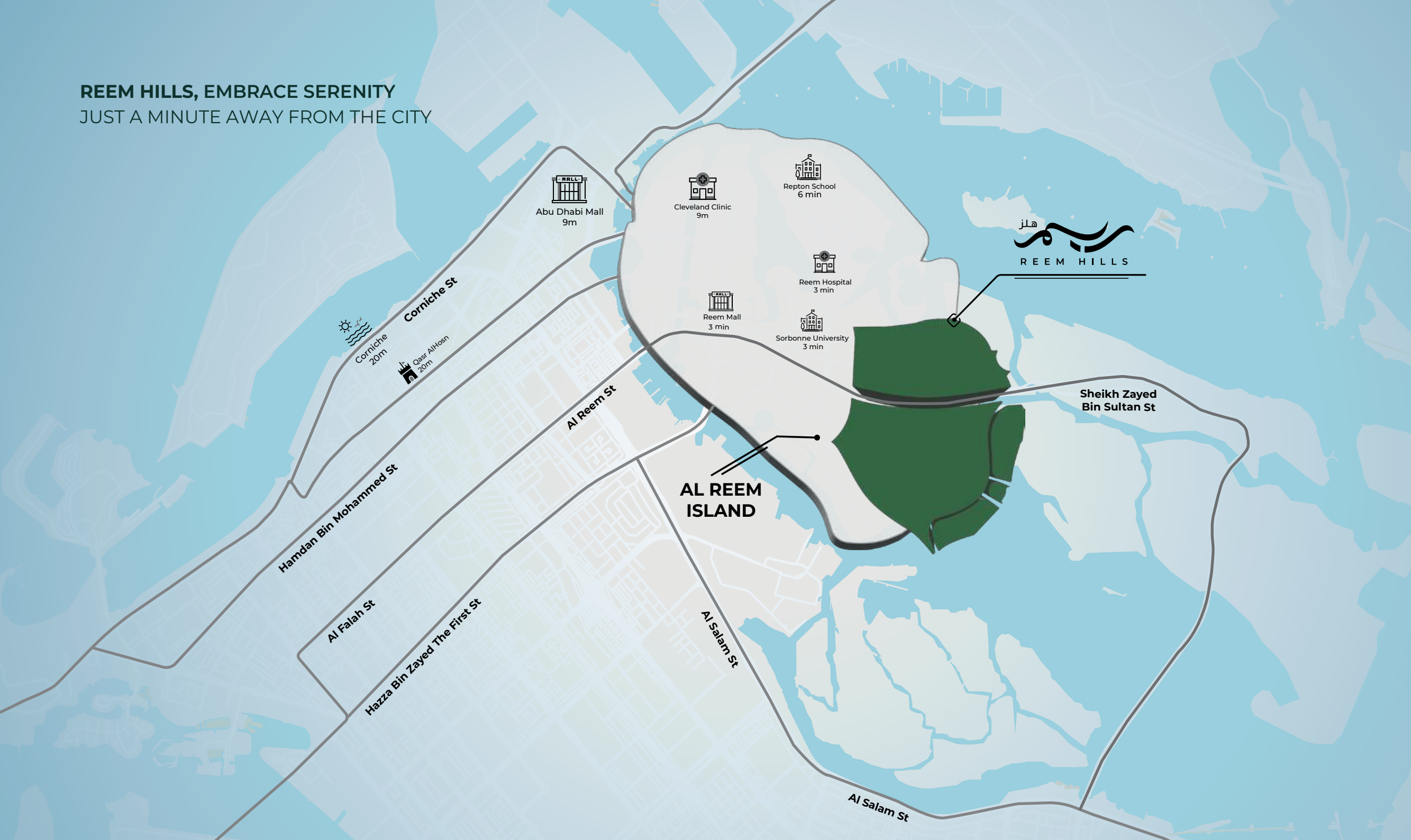


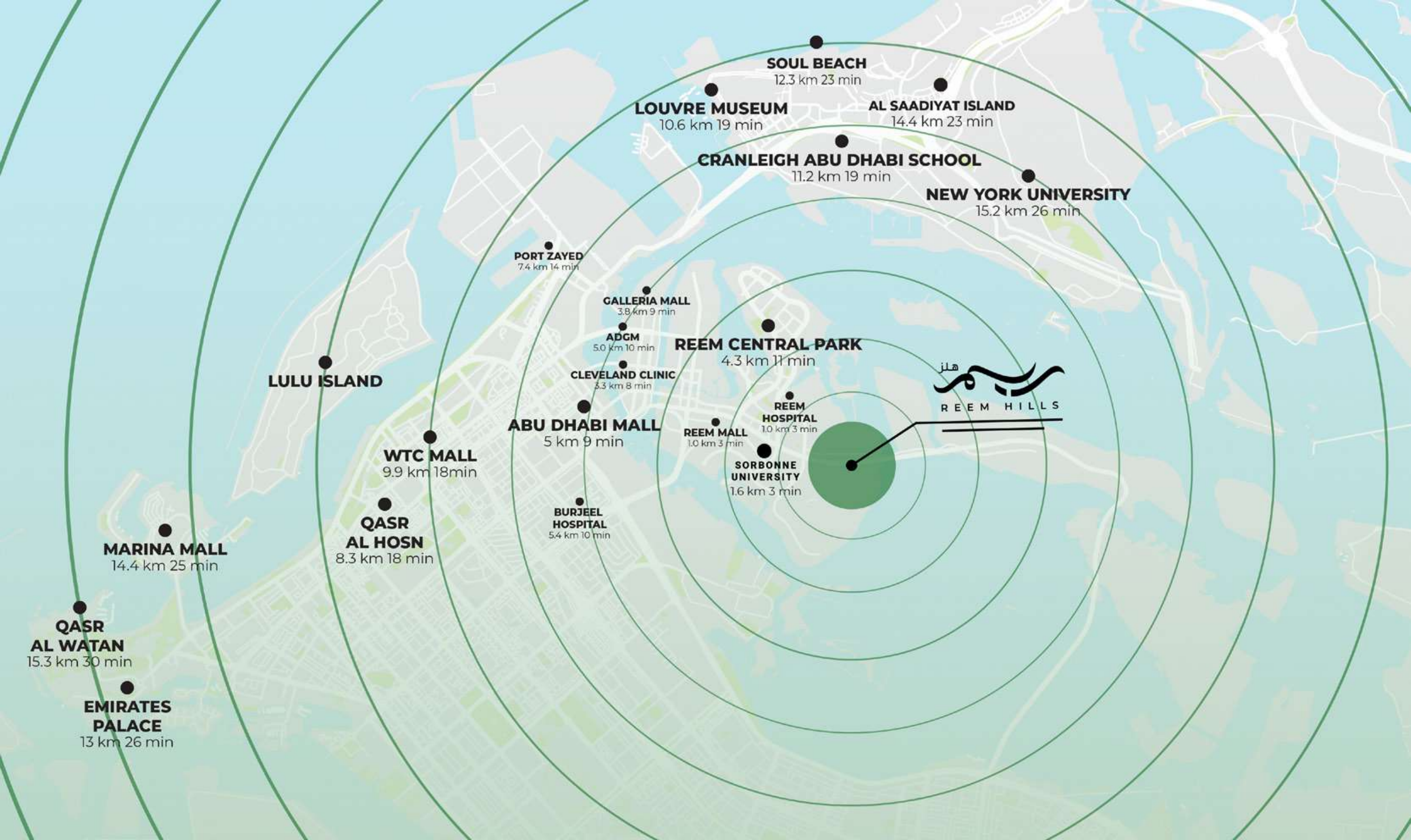
REEM HILLS NEW PHASE

PEAK LIVING IN THE HEART OF THE CAPITAL

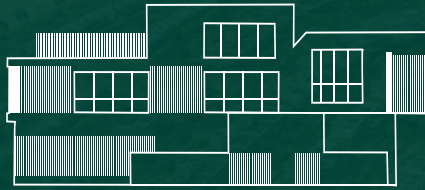


REEM HILLS, EMBRACE SERENITY
JUST A MINUTE AWAY FROM THE CITY

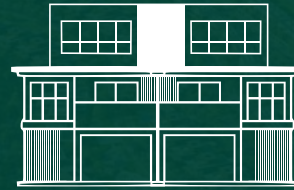




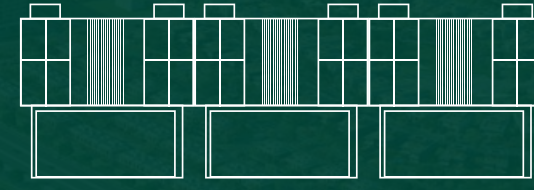
REEM HILLS IS THE BEGINNING OF EVERYTHING BEAUTIFUL



VILLAS
4 TO 7 BEDROOM



TWIN VILLAS
4 BEDROOM



TOWNHOUSES
3 BEDROOM

- An unparalleled first-gated community in the heart of the capital
- Expansive spaces
- Variety of designs & layouts
- Competitive prices
- Dominating proximity to the convenience of the capital
- Luxury and serenity in the heart of the capital

STEP INTO A WORLD OF OPULENT
COMFORT, TRANQUILLITY AND LUXURY



ENJOY THE BEAUTY OF NATURE












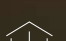

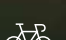


A LIFESTYLE THAT BRINGS YOU
MORE HAPPINESS AND COMFORT



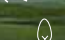

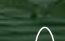




FACILITIES AND BENEFITS AT YOUR DOORSTEP

AMENITIES & RECREATIONAL AREAS

- | | | | |
|---|-----------------------|---|--------------------------|
|  | GATED COMMUNITY |  | SANDY BEACHES |
|  | PRIVATE SCHOOL |  | CANAL PROMENADE |
|  | COMMUNITY CENTRE |  | RESTAURANTS & CAFES |
|  | EARLY LEARNING CENTRE |  | MEDICAL SERVICES |
|  | MOSQUES |  | CLUBHOUSES |
|  | RETAIL |  | JOGGING & CYCLING TRACKS |

PARKS

- | | |
|---|---------------------------------|
|  | NEIGHBORHOOD PARK |
|  | LINEAR PARK |
|  | POCKET PARK |
|  | LANDSCAPED HILL |
|  | COMMUNITY PARKS & PLAYING AREAS |
|  | SPORTS COURTS |
|  | SHADED SEATING AREAS |











THE NEW PHASE.. A PERFECT COMBINATION
OF LUXURY & SPACIOUSNESS







PARK VALLEY

NORTH BAY

GARDEN HOMES

COAST WAY

BEACH BAY



CHOOSE YOUR HOME OF LUXURY & SPACIOUSNESS

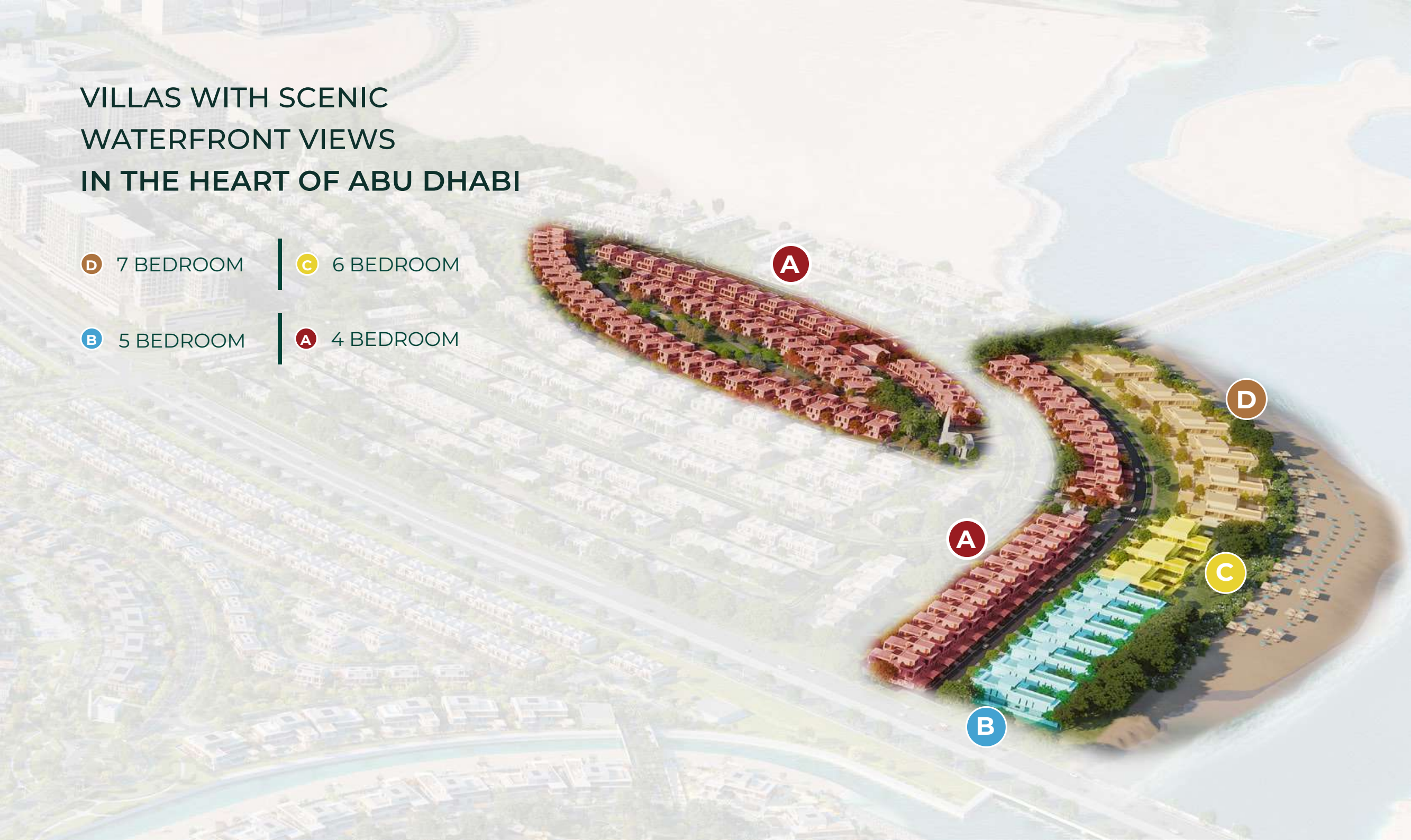
VILLAS WITH SCENIC WATERFRONT VIEWS IN THE HEART OF ABU DHABI

D 7 BEDROOM

C 6 BEDROOM

B 5 BEDROOM

A 4 BEDROOM



7 BEDROOM VILLA

MINIMAL DESIGN



A PLACE, WHICH BRINGS ALL
YOUR DREAMS TOGETHER

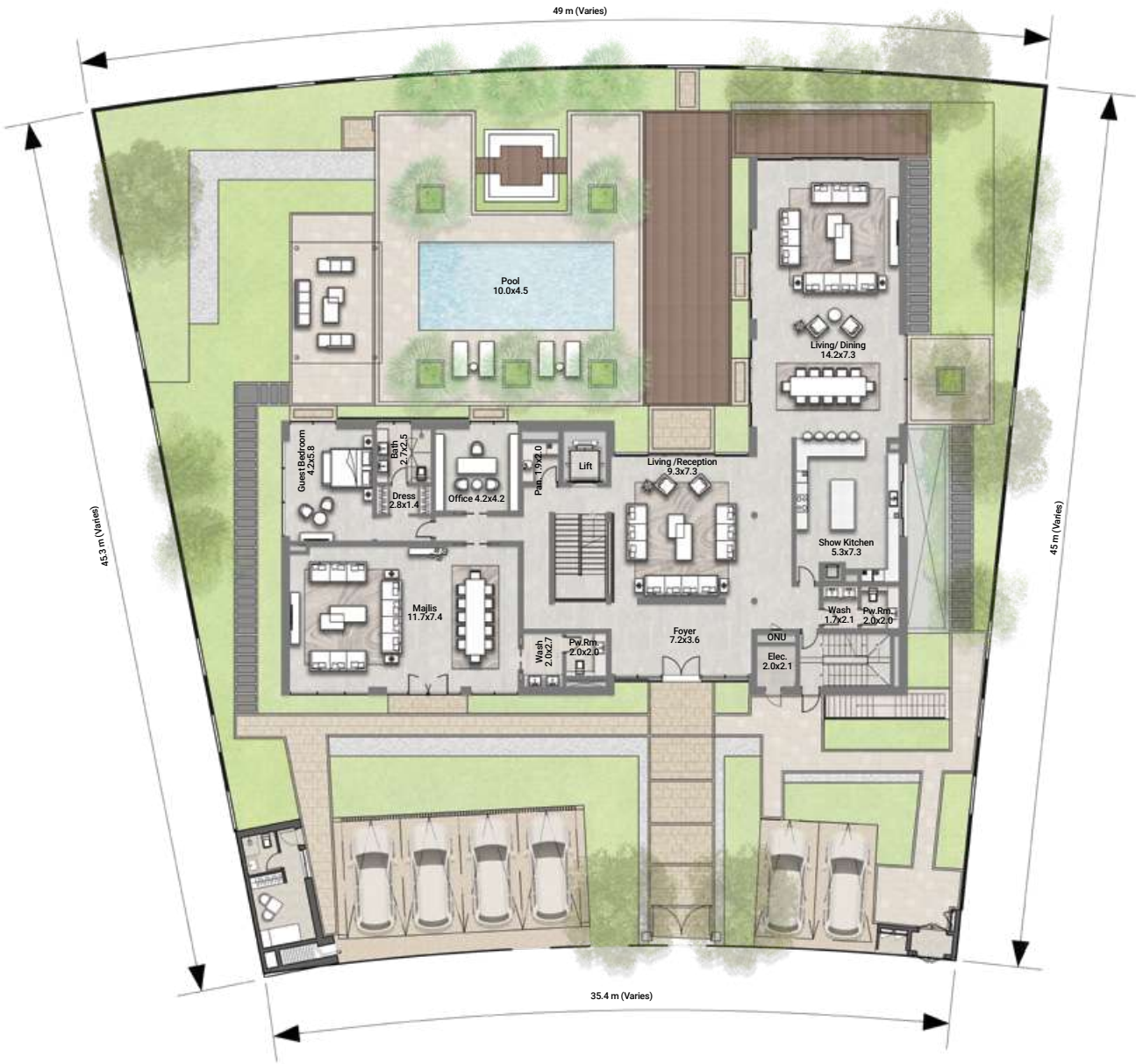




7 BEDROOM VILLA
MINIMAL DESIGN

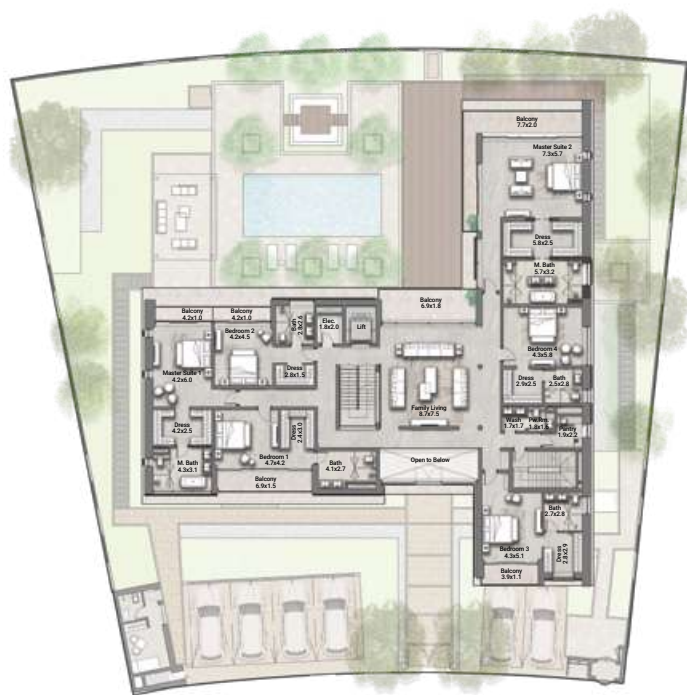
| | |
|---------------------|--------------|
| NO. OF BEDROOMS | 07 |
| FLOOR CONFIGURATION | B+G+1+Roof |
| TOTAL SALEABLE AREA | 17,435 sqft |
| PLOT SIZE | 20,082 sqft* |

*Starting from

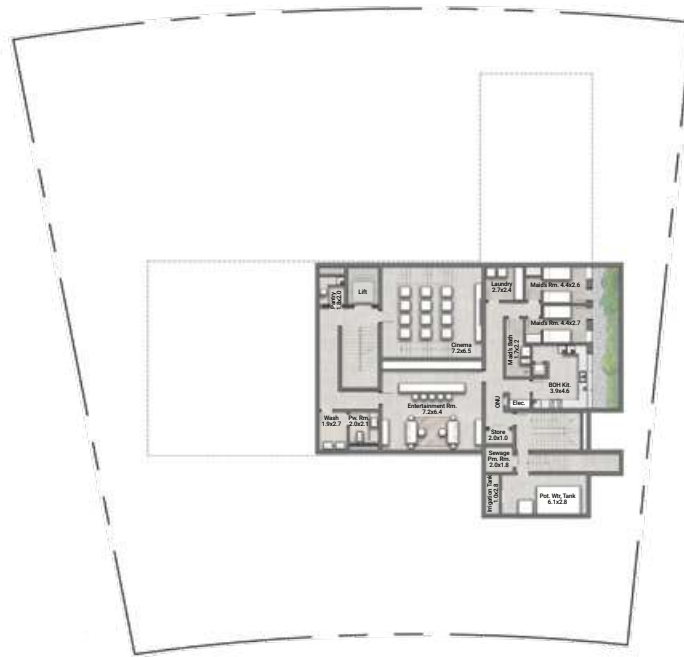


GROUND FLOOR

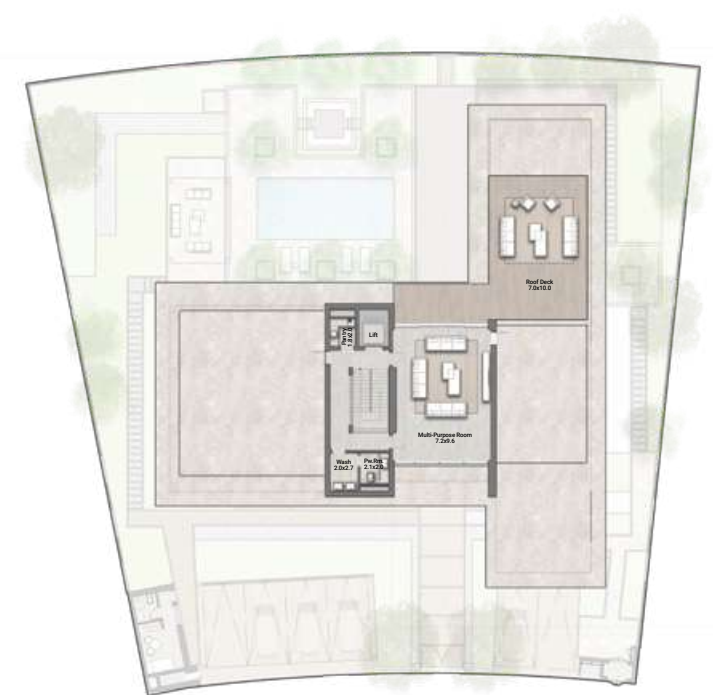
All materials, dimensions, and drawings are approximate only, including actual areas. / Information is subject to change at developer's discretion, without notice, and developer reserves the right to make revisions without liability. / All images used are for illustrative purposes only and do not represent the actual size, features, specifications, fittings, and furnishings.



FIRST FLOOR



BASEMENT



ROOF FLOOR

All materials, dimensions, and drawings are approximate only, including actual areas. / Information is subject to change at developer's discretion, without notice, and developer reserves the right to make revisions without liability. / All images used are for illustrative purposes only and do not represent the actual size, features, specifications, fittings, and furnishings.

6 BEDROOM VILLA

MINIMAL DESIGN



SERENITY LIVING
IN THE HEART OF THE CAPITAL

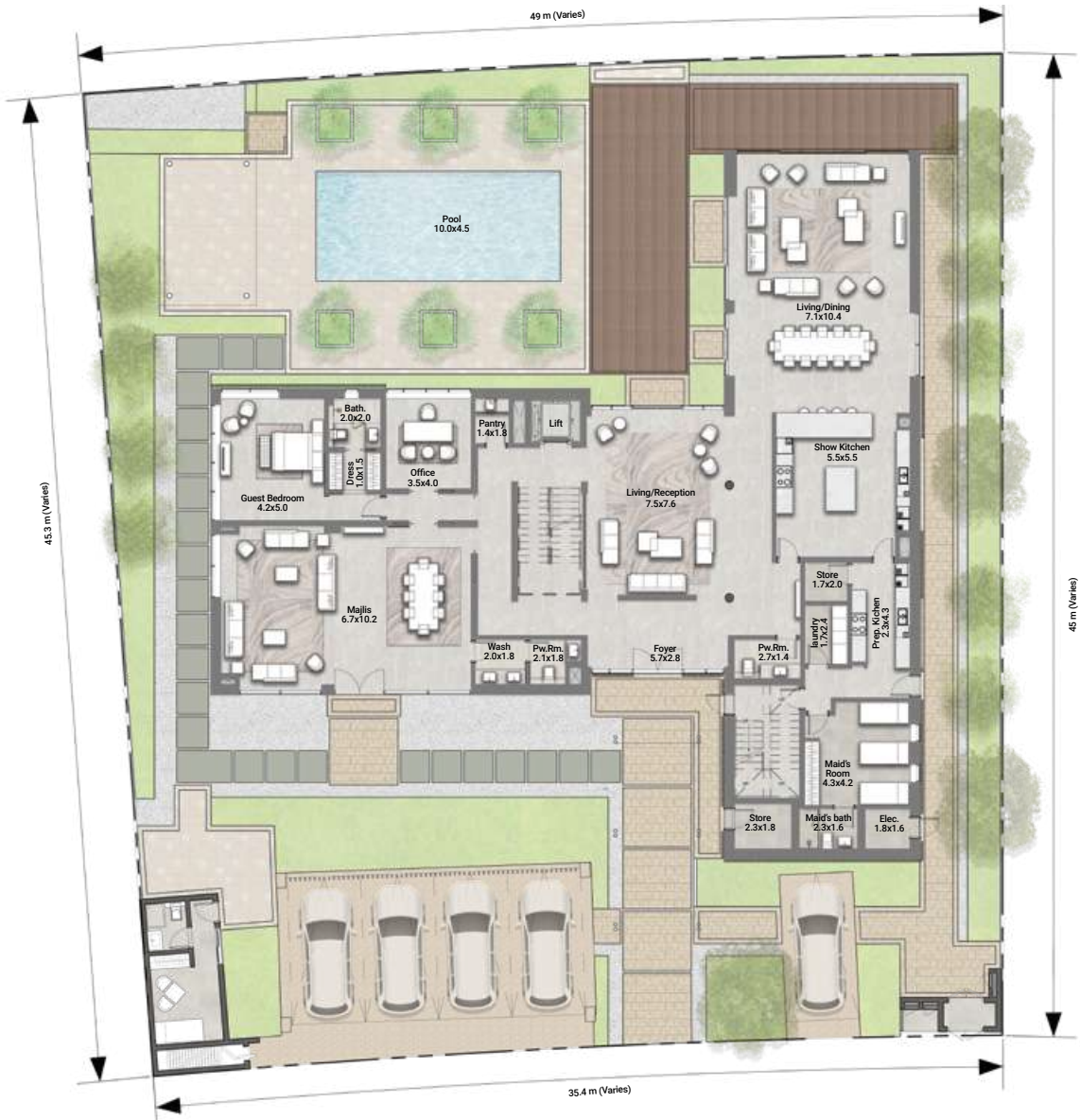




6 BEDROOM VILLA
MINIMAL DESIGN

| | |
|---------------------|--------------|
| NO. OF BEDROOMS | 06 |
| FLOOR CONFIGURATION | G+1+Roof |
| TOTAL SALEABLE AREA | 13,108 sqft |
| PLOT SIZE | 17,480 sqft* |

*Starting from

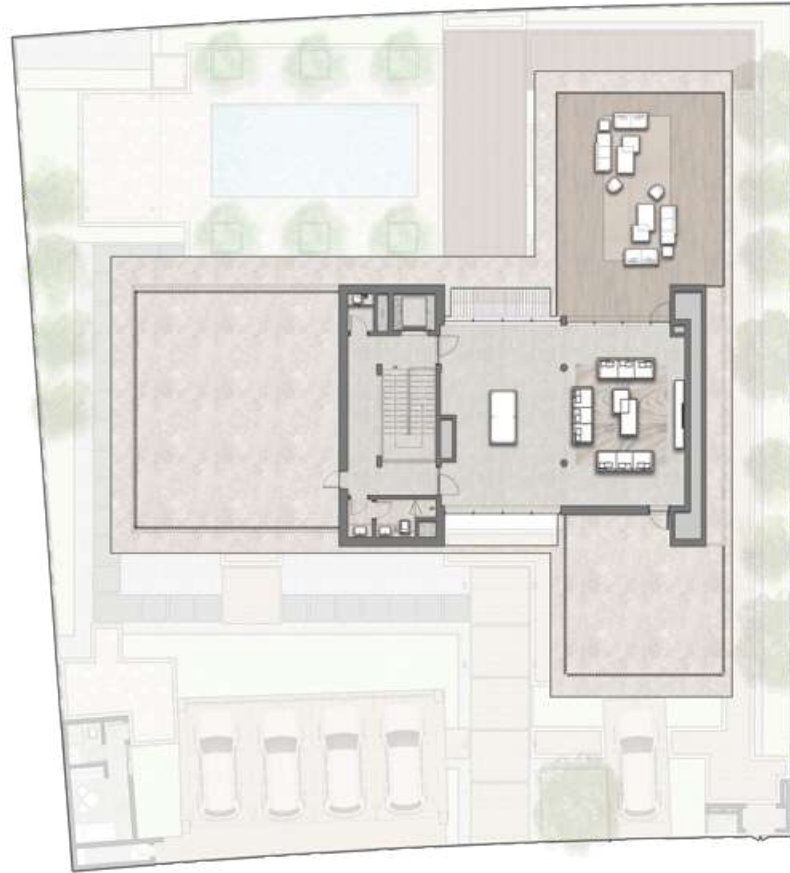


GROUND FLOOR

All materials, dimensions, and drawings are approximate only, including actual areas. / Information is subject to change at developer's discretion, without notice, and developer reserves the right to make revisions without liability. / All images used are for illustrative purposes only and do not represent the actual size, features, specifications, fittings, and furnishings.



FIRST FLOOR



ROOF FLOOR

All materials, dimensions, and drawings are approximate only, including actual areas. / Information is subject to change at developer's discretion, without notice, and developer reserves the right to make revisions without liability. / All images used are for illustrative purposes only and do not represent the actual size, features, specifications, fittings, and furnishings.

5 BEDROOM VILLA

MINIMAL DESIGN



A VIEW OVERLOOKING THE POOL
AND THE PARK

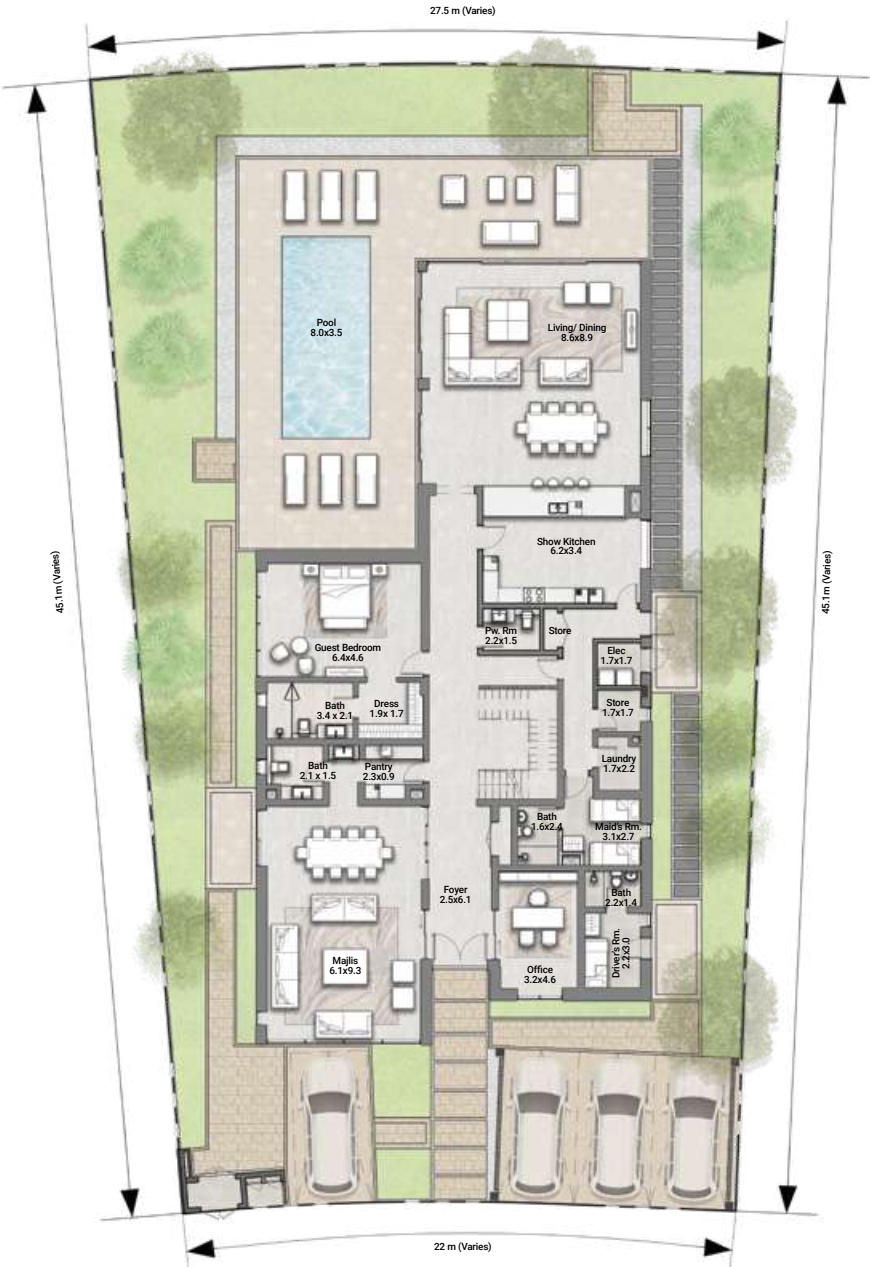




5 BEDROOM VILLA
MINIMAL DESIGN

| | |
|---------------------|--------------|
| NO. OF BEDROOMS | 05 |
| FLOOR CONFIGURATION | G+1+Roof |
| TOTAL SALEABLE AREA | 10,487 sqft |
| PLOT SIZE | 11,625 sqft* |

*Starting from



GROUND FLOOR

All materials, dimensions, and drawings are approximate only, including actual areas. / Information is subject to change at developer's discretion, without notice, and developer reserves the right to make revisions without liability. / All images used are for illustrative purposes only and do not represent the actual size, features, specifications, fittings, and furnishings.



FIRST FLOOR



ROOF FLOOR

All materials, dimensions, and drawings are approximate only, including actual areas. / Information is subject to change at developer's discretion, without notice, and developer reserves the right to make revisions without liability. / All images used are for illustrative purposes only and do not represent the actual size, features, specifications, fittings, and furnishings.

A flowing, draped red fabric, possibly silk or satin, is the central focus of the image. It is set against a dark, textured green background. The fabric has deep folds and highlights, giving it a sense of movement and elegance. The overall composition is minimalist and sophisticated.

DESIGNS THAT MAKE YOU FEEL LIKE ROYALTY

INTERIORS FOR 7,6,5
BEDROOM VILLAS

COMES WITH THE FINEST LEVEL OF
DESIGN AND SUPERB FLOW



BRIGHT AND WARM LIVING ROOM



ENDURING VALUE AND TIMELESS SPACES









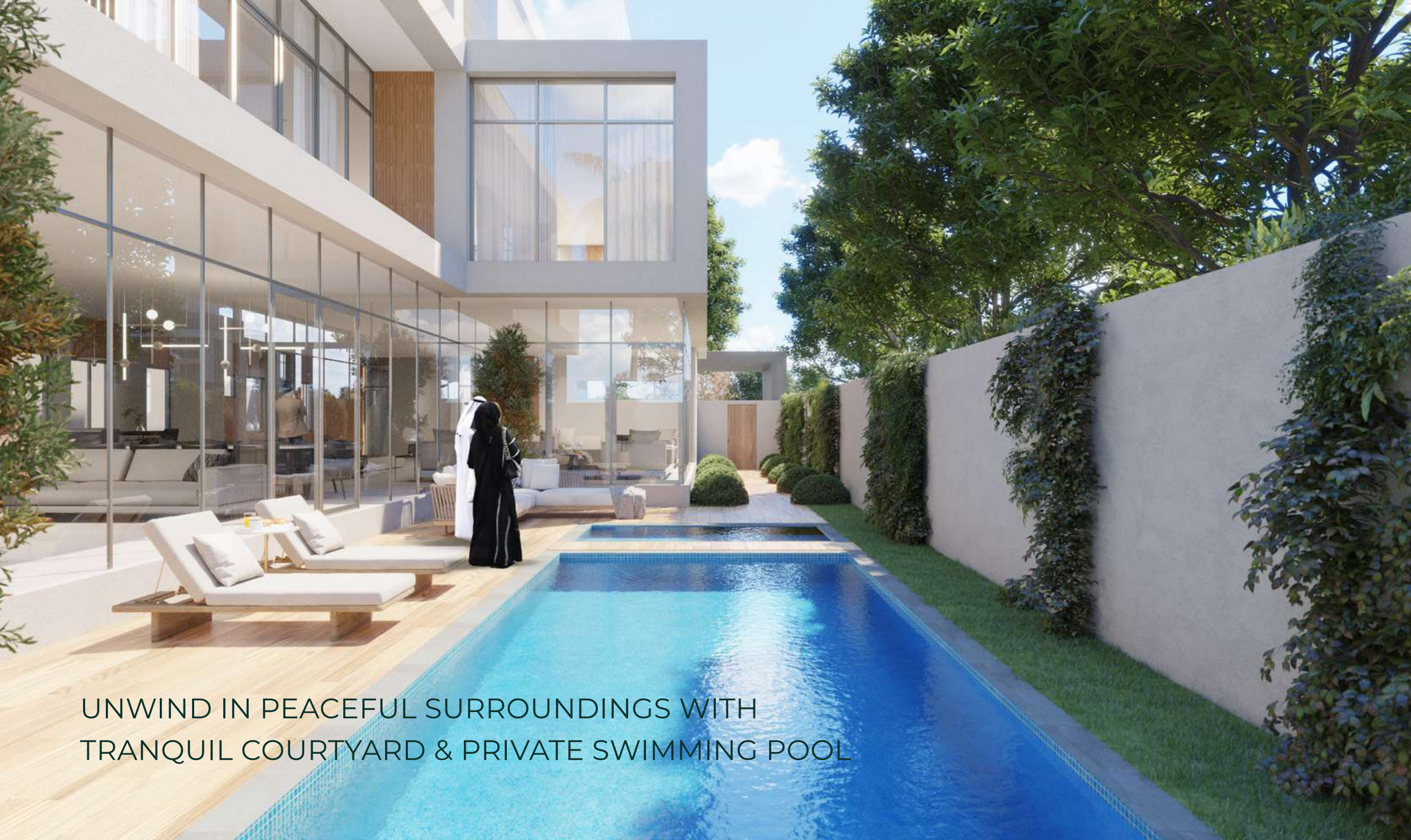
4 BEDROOM VILLA

MINIMAL DESIGN



YOUR BEST LIFE BEGINS WITH
A HOME THAT INSPIRES YOU





UNWIND IN PEACEFUL SURROUNDINGS WITH
TRANQUIL COURTYARD & PRIVATE SWIMMING POOL

ELEVATE YOUR STYLE WITH OUR EXQUISITELY
DESIGNED AND EFFORTLESSLY FLOWING LIVING SPACE





A modern, open-plan living and dining area. The kitchen is on the left with dark cabinetry and a marble countertop. The dining area features a dark table and green upholstered chairs. The living area has a large white sectional sofa, a glass coffee table, and a patterned ottoman. Large windows on the right side offer a view of a garden with trees and a patio area.

EMBRACE THE BEST IN COMFORT AND EASE
WITH OUR LARGE SPACES



4 BEDROOM VILLA

MINIMAL DESIGN

| | |
|---------------------|-------------|
| NO. OF BEDROOMS | 04 |
| FLOOR CONFIGURATION | G+1+Roof |
| TOTAL SALEABLE AREA | 6,036 sqft |
| PLOT SIZE | 6,394 sqft* |

*Starting from



GROUND FLOOR

All materials, dimensions, and drawings are approximate only, including actual areas. / Information is subject to change at developer's discretion, without notice, and developer reserves the right to make revisions without liability. / All images used are for illustrative purposes only and do not represent the actual size, features, specifications, fittings, and furnishings.



FIRST FLOOR



ROOF FLOOR

FEATURES

- ✓ 4 EN SUITE BEDROOMS
- ✓ LIVING AND DINING
- ✓ MAJLIS
- ✓ KITCHEN
- ✓ FAMILY LOUNGE
- ✓ OFFICE/ STUDY LOUNGE (WITH ROOF DECK)
- ✓ DRIVER'S ROOM
- ✓ MAID'S ROOM
- ✓ STORE ROOM

An aerial photograph of a residential development in Abu Dhabi. The development is a long, narrow strip of land with a winding path. It is surrounded by a dense urban area with many small, uniform houses. The development itself features two types of villas: 'Chic Design' (labeled A) and 'Minimal Design' (labeled B). The villas are arranged in a line, with some greenery and trees interspersed. The background shows a body of water and a distant city skyline.

TWIN VILLAS AMIDST SERENE VIBES IN THE HEART OF ABU DHABI

A 4 BEDROOM TWIN VILLAS
CHIC DESIGN

B 4 BEDROOM TWIN VILLAS
MINIMAL DESIGN

4 BEDROOM TWIN VILLAS

MINIMAL DESIGN





STEP INTO A VISION OF INDIVIDUALIZED LUXURY AND
SOPHISTICATED LUSH INTERIORS

4 BEDROOM TWIN VILLAS

CHIC DESIGN





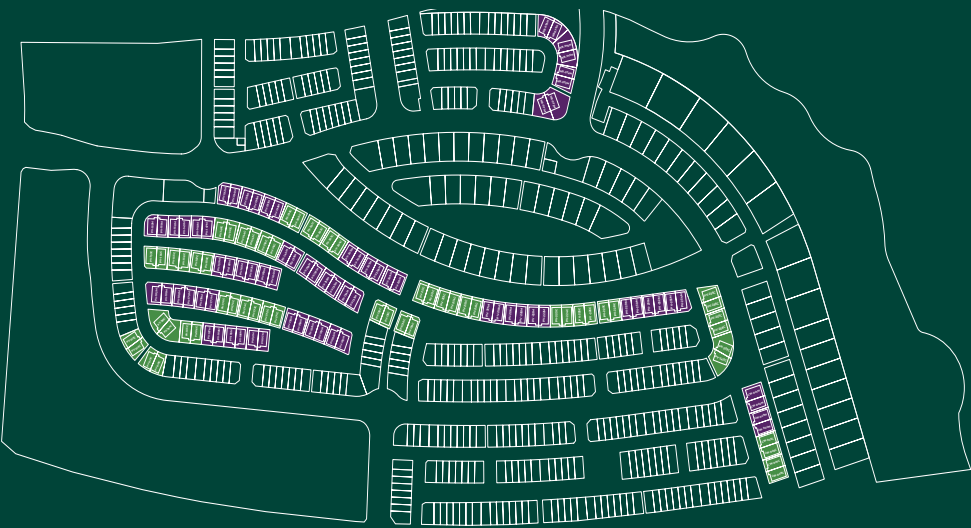
THE EPITOME OF COMFORTABLE LIVING

4 BEDROOM TWIN VILLAS
MINIMAL & CHIC DESIGNS

| | |
|---------------------|--------------------------------|
| NO. OF BEDROOMS | 04 + (OFFICE+FAMILY LOUNGE) |
| FLOOR CONFIGURATION | G+1+Roof |
| TOTAL SALEABLE AREA | 3,887 sqft |
| PLOT SIZE | 3,251 sqft* |

*Starting from

- CHIC DESIGN
- MINIMAL DESIGN



GROUND FLOOR

All materials, dimensions, and drawings are approximate only, including actual areas. / Information is subject to change at developer's discretion, without notice, and developer reserves the right to make revisions without liability. / All images used are for illustrative purposes only and do not represent the actual size, features, specifications, fittings, and furnishings.



FIRST FLOOR



ROOF FLOOR

FEATURES

- ✓ 4 EN-SUITE BEDROOMS
- ✓ FAMILY LOUNGE
- ✓ STUDY ROOM/ OFFICE
- ✓ MAID'S ROOM
- ✓ STORE ROOM
- ✓ ROOF TERRACE
- ✓ LIVING & DINING
- ✓ SEMI CLOSED KITCHEN
- ✓ OUTDOOR GARDEN AREA
- ✓ 3 PARKINGS

An aerial architectural rendering of a townhouse development in Abu Dhabi. The development is situated along a waterfront, with a large body of water to the right. The townhouses are arranged in a long, narrow row, with a central access road and parking area. The surrounding area includes a mix of residential buildings, green spaces, and a bridge in the background. The rendering is presented in a semi-transparent, ethereal style, allowing the underlying cityscape to be visible.

TOWNHOUSES AMIDST SERENE VIBES IN THE HEART OF ABU DHABI

A 3 BEDROOM TOWNHOUSES
MINIMAL DESIGN

B 3 BEDROOM TOWNHOUSES
CHIC DESIGN

3 BEDROOM TOWNHOUSE

MINIMAL DESIGN





3 BEDROOM TOWNHOUSES

CHIC DESIGN





3 BEDROOM TOWNHOUSES
MID-UNIT | TYPE RM

| | |
|---------------------|-------------------------|
| NO. OF BEDROOMS | 03 + (FAMILY LOUNGE) |
| FLOOR CONFIGURATION | G+1 |
| TOTAL SALEABLE AREA | 2,377 sqft |
| PLOT SIZE | 2,120 sqft* |

*Starting from

- MINIMAL DESIGN
- CHIC DESIGN

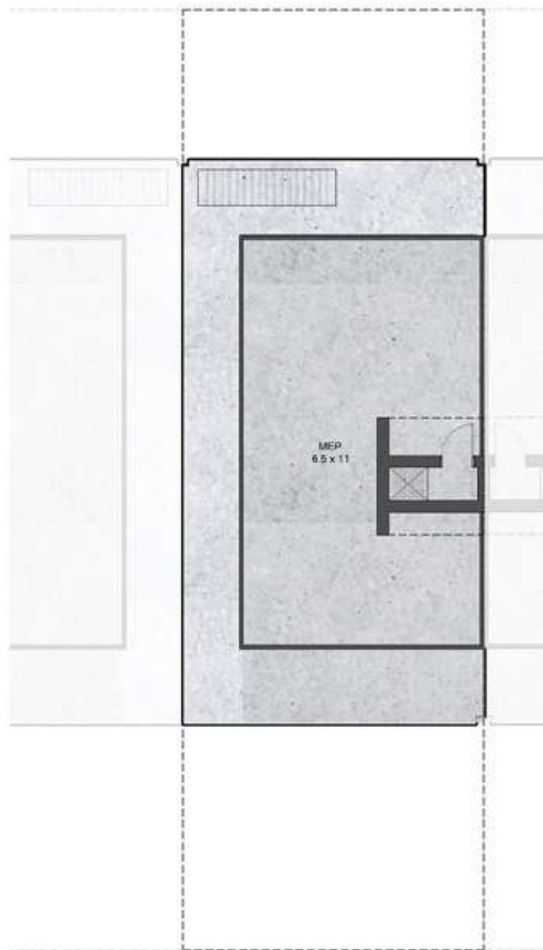


GROUND FLOOR

All materials, dimensions, and drawings are approximate only, including actual areas. / Information is subject to change at developer's discretion, without notice, and developer reserves the right to make revisions without liability. / All images used are for illustrative purposes only and do not represent the actual size, features, specifications, fittings, and furnishings.



FIRST FLOOR



ROOF FLOOR

FEATURES

- ✓ 3 EN-SUITE BEDROOMS
- ✓ FAMILY LOUNGE
- ✓ MAID'S ROOM
- ✓ STORE ROOM
- ✓ LIVING & DINING
- ✓ POWDER ROOM
- ✓ SEMI CLOSED KITCHEN
- ✓ OUTDOOR GARDEN
- ✓ 2 PARKINGS

3 BEDROOM TOWNHOUSES
CORNER-UNIT | TYPE RC

| | |
|---------------------|-------------------------|
| NO. OF BEDROOMS | 03 + (FAMILY LOUNGE) |
| FLOOR CONFIGURATION | G+1 |
| TOTAL SALEABLE AREA | 2,377 sqft |
| PLOT SIZE | 2,772 sqft* |

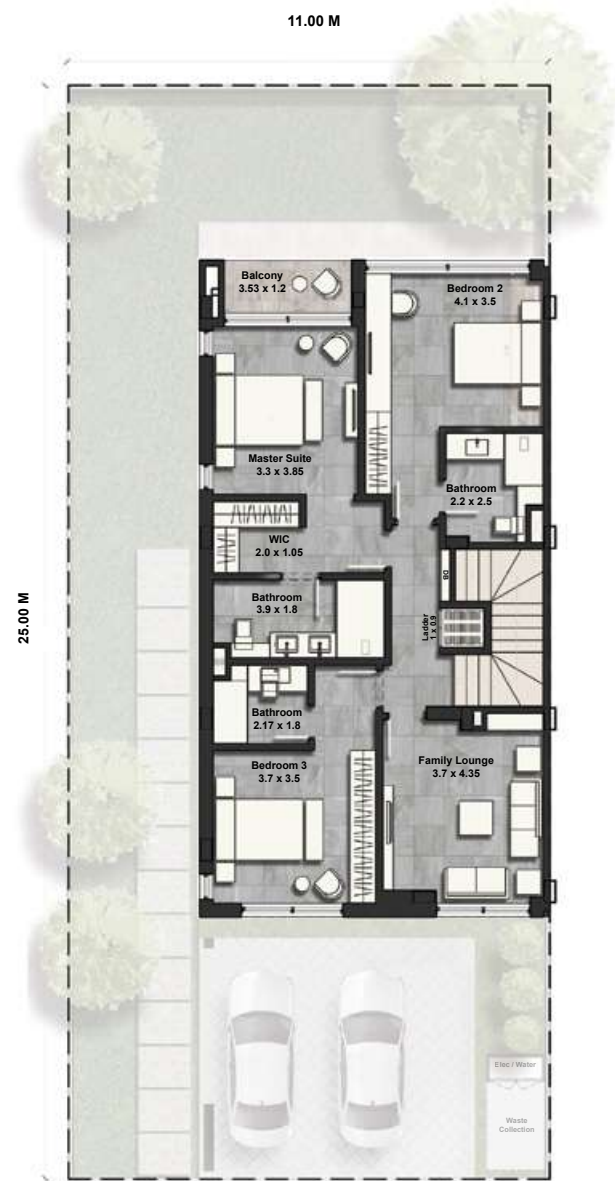
*Starting from

- MINIMAL DESIGN
- CHIC DESIGN

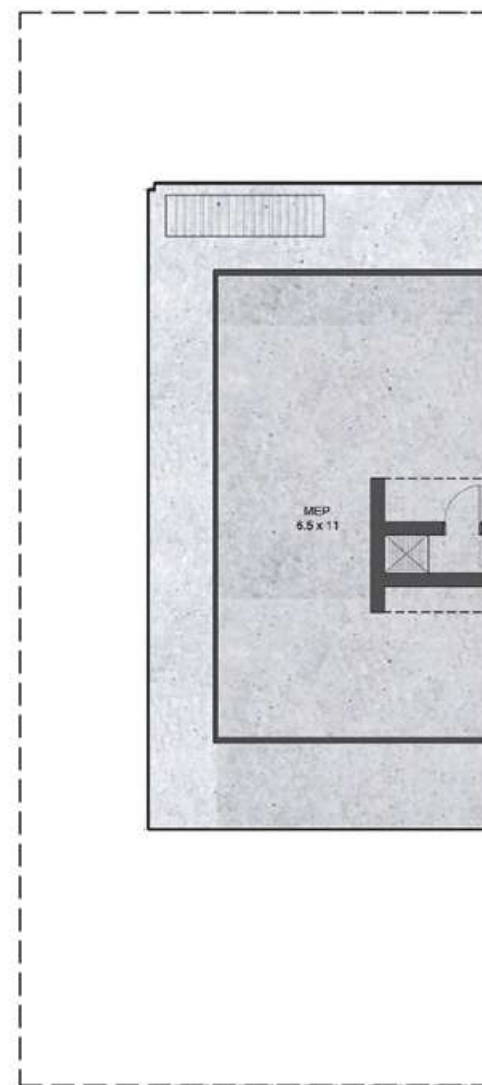


GROUND FLOOR

All materials, dimensions, and drawings are approximate only, including actual areas. / Information is subject to change at developer's discretion, without notice, and developer reserves the right to make revisions without liability. / All images used are for illustrative purposes only and do not represent the actual size, features, specifications, fittings, and furnishings.



FIRST FLOOR



ROOF FLOOR

FEATURES

- ✓ 3 EN-SUITE BEDROOMS
- ✓ FAMILY LOUNGE
- ✓ MAID'S ROOM
- ✓ STORE ROOM
- ✓ LIVING & DINING
- ✓ POWDER ROOM
- ✓ SEMI CLOSED KITCHEN
- ✓ OUTDOOR GARDEN
- ✓ 2 PARKINGS

A flowing red fabric, possibly silk or satin, is draped across the frame. It has a glossy sheen and creates deep, soft folds. The background is a solid, dark teal or forest green color. The lighting highlights the texture and movement of the fabric.

DESIGNS THAT INSPIRE YOU

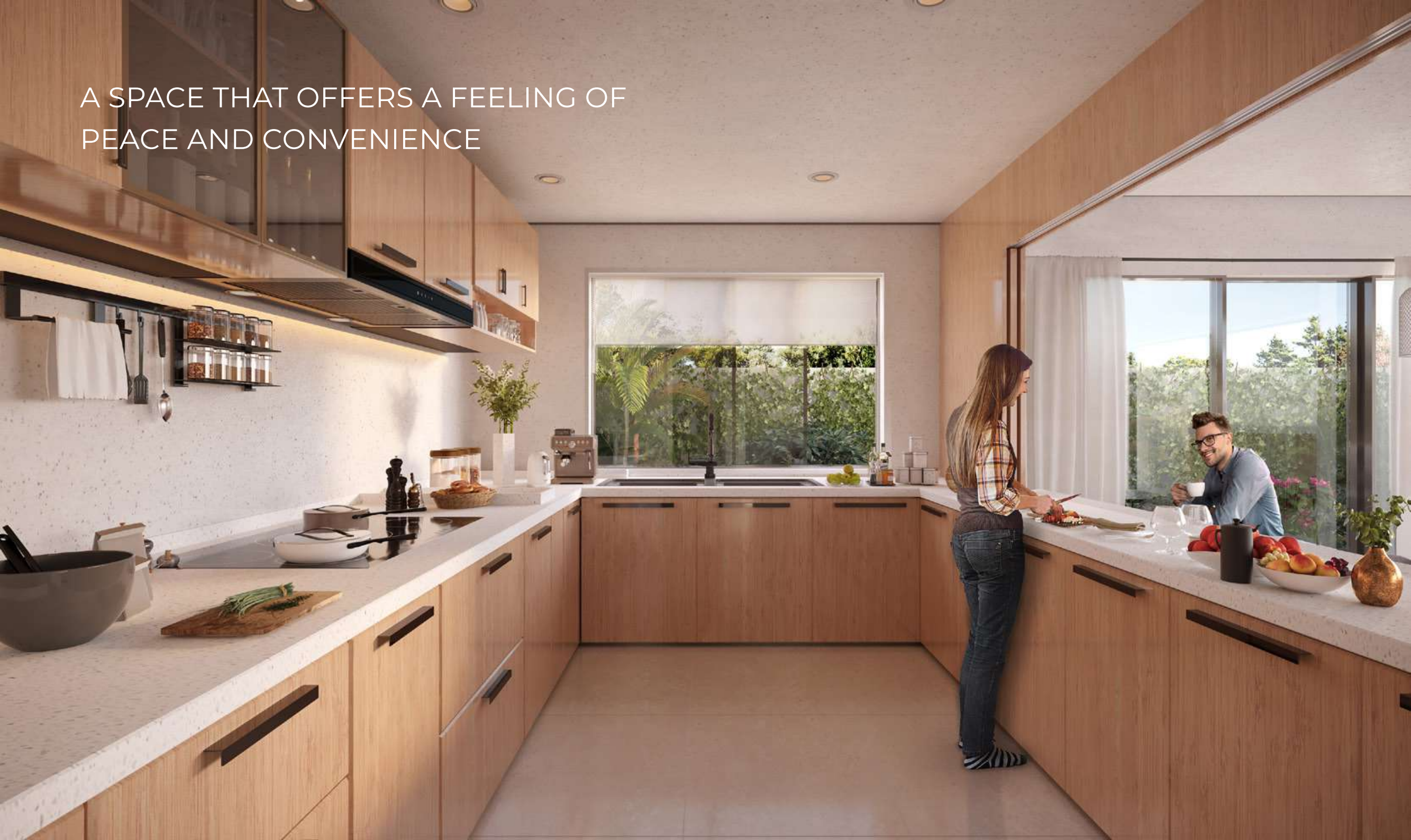
INTERIORS FOR 3 & 4 BEDROOM
TOWNHOUSES AND TWIN VILLAS

IMPRESS YOUR FAMILY AND FRIENDS
WITH SPACIOUSNESS





A SPACE THAT OFFERS A FEELING OF
PEACE AND CONVENIENCE



CREATING SPACES THAT ARE BOTH
BEAUTIFUL AND FUNCTIONAL





An aerial photograph of a modern residential development. The image shows several multi-story buildings with light-colored facades and large glass windows, interspersed with lush greenery, including palm trees and other tropical plants. A winding path or road is visible through the greenery. In the background, the ocean is visible under a clear blue sky with some light clouds. The overall scene is bright and sunny, suggesting a warm climate.

BE PART OF OUR EXCEPTIONAL COMMUNITY
AND BOOK YOUR DREAM HOME IN THE HEART OF THE CAPITAL



TANAMI

PROPERTIES

CONTACT US

 +971 4 248 3400 |  +971 55 162 3236

Email Us

info@tanamiproperties.ae

For More Info...

www.tanamiproperties.com/Projects/Reem-Hills-Phase-2



ADDRESS

Office 3405, Marina Plaza,
Al Marsa Street, Dubai Marina, UAE