

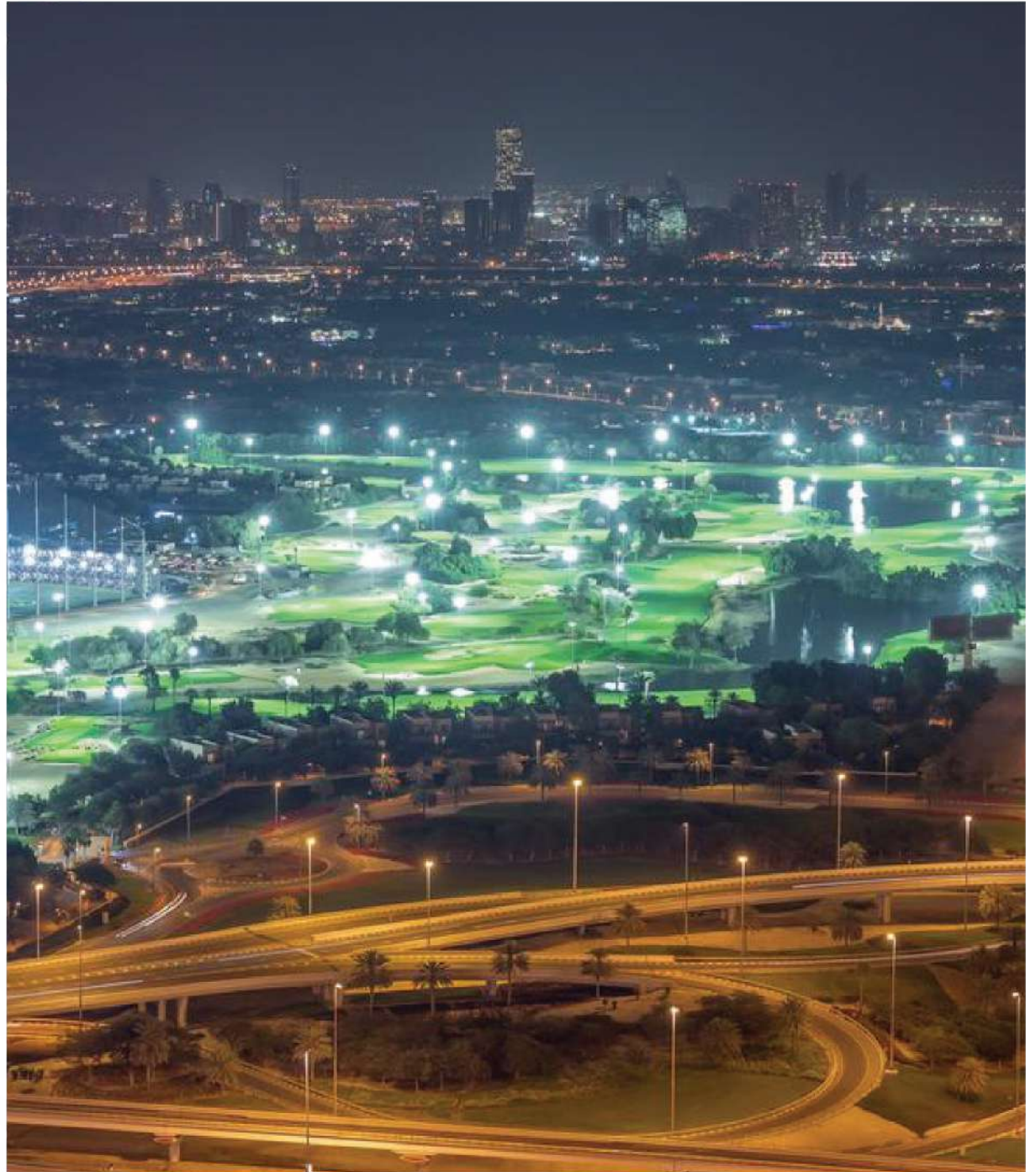
The logo for ELBRUS, featuring the word in a bold, white, sans-serif font. The letters are stylized with horizontal lines through them, giving it a modern, technological feel. The logo is centered horizontally and vertically on a dark gray background with a repeating geometric pattern of interlocking 'L' shapes. A vertical strip of the same pattern, but in white, runs along the right edge of the image.

ELBRUS

## Jumeirah Village Triangle JVT

JVT is one of the fascinating locations in the UAE and is well-known for its outstanding buildings and natural views. It offers its residents a distinctive way to live in Dubai, as a vibrant area with natural surroundings. It is the ideal location for everyone because it has everything you could possibly need, including parks, sports fields, playgrounds, and more.

It offers opulent views and an Arabian feel in the architecture of each building. It offers convenient access to transportation as well as popular sights to see and memorable experiences. Additionally, it's close to JBR, the Palm Jumeirah, and other desirable locations. Moving from and to this area is simple thanks to Sheikh Mohammed Bin Zayed Road, Al Khail Road, and Hessa Street are close by.



ELBRUS

## Our Elbrus Inspiration

The Caucasus Mountains, which include Elbrus, are home to Europe's tallest mountain peak. Part of the Caucasus Mountains, Mount El'brus, is in southwest Russia. Both in Russia and throughout all of Europe, it is the highest point.

As a unique mountain, it inspired our group at Tiger to create this Tower in JVT with a unique design that flatters its surroundings. This skyscraper stands superbly in the area with a breathtaking modern appearance.





## Elbrus Tower

Elbrus Tower is a unique 29-story residential structure located in the core of the Jumeirah Village Triangle. As an off-plan project, it offers an outstanding living experience to its residents with a blend of modern designs, fascinating facilities, and Arabian vibes. With a set of the most beneficial flexible payment plans, this tower is an investment in itself.

With luxury and comfort mixed within every design aspect, Elbrus Tower also has stunning views of the surrounding landscape. With a serene living environment, this tower is a well-planned area where families can shape their future with utmost luxury.

**268**

Residential Flats

**52**

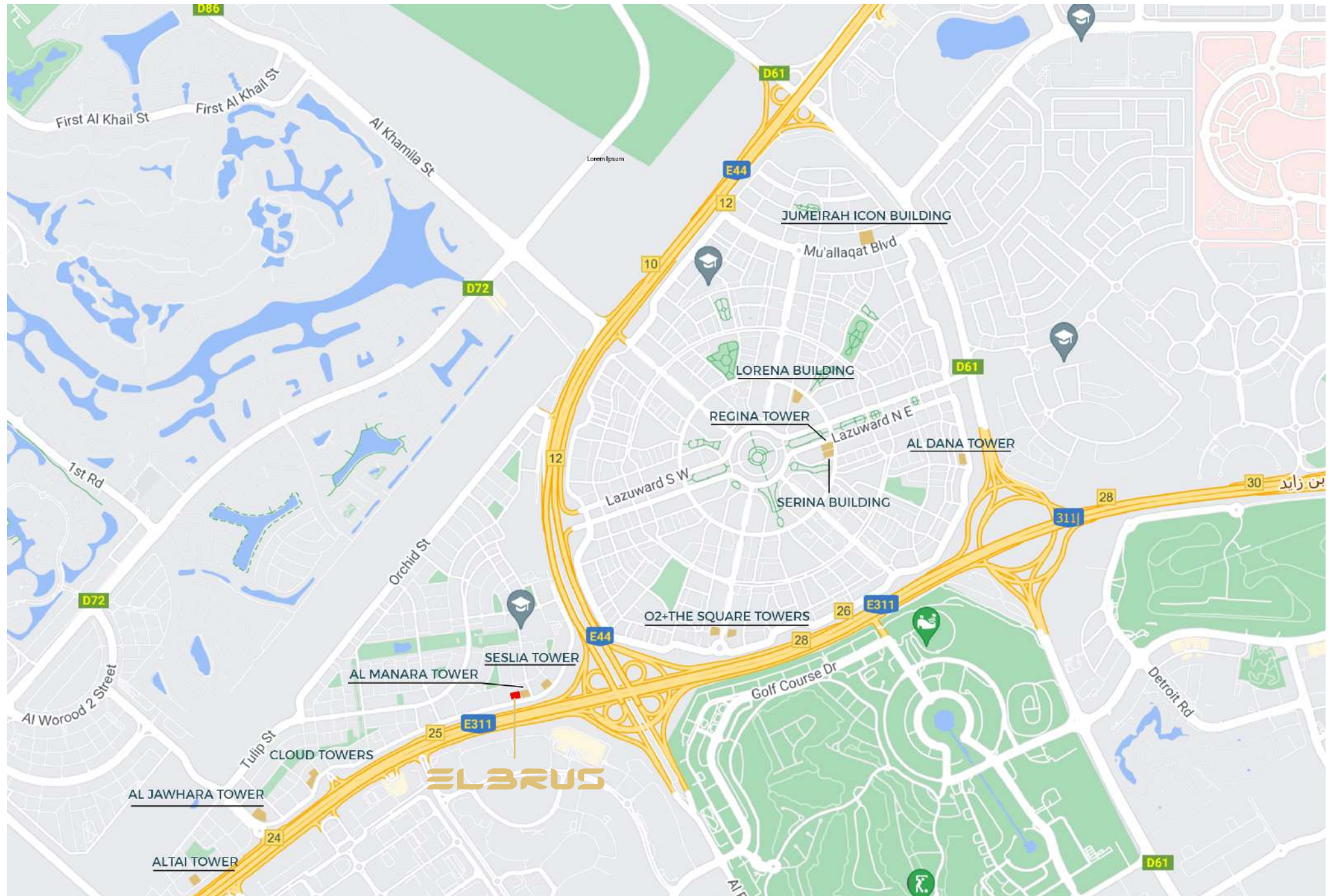
Studios

**162**

One-Bedroom  
Apartments

**54**

Two-Bedroom  
Apartments





# LOCATION MAP

At the core of your favorite areas

Located at the core of your favorite places such as JBR, Palm Jumeirah, Global Village, and more, it's a desirable residential place where your future is filled with elegance and comfort. With easy access to various shopping, dining, and entertainment options, you get to enjoy the best of what Dubai has to offer.

Close to so many vital places:



10 min

JBR



15 min

Palm Jumeirah



17 MIN

Mall of Emirates



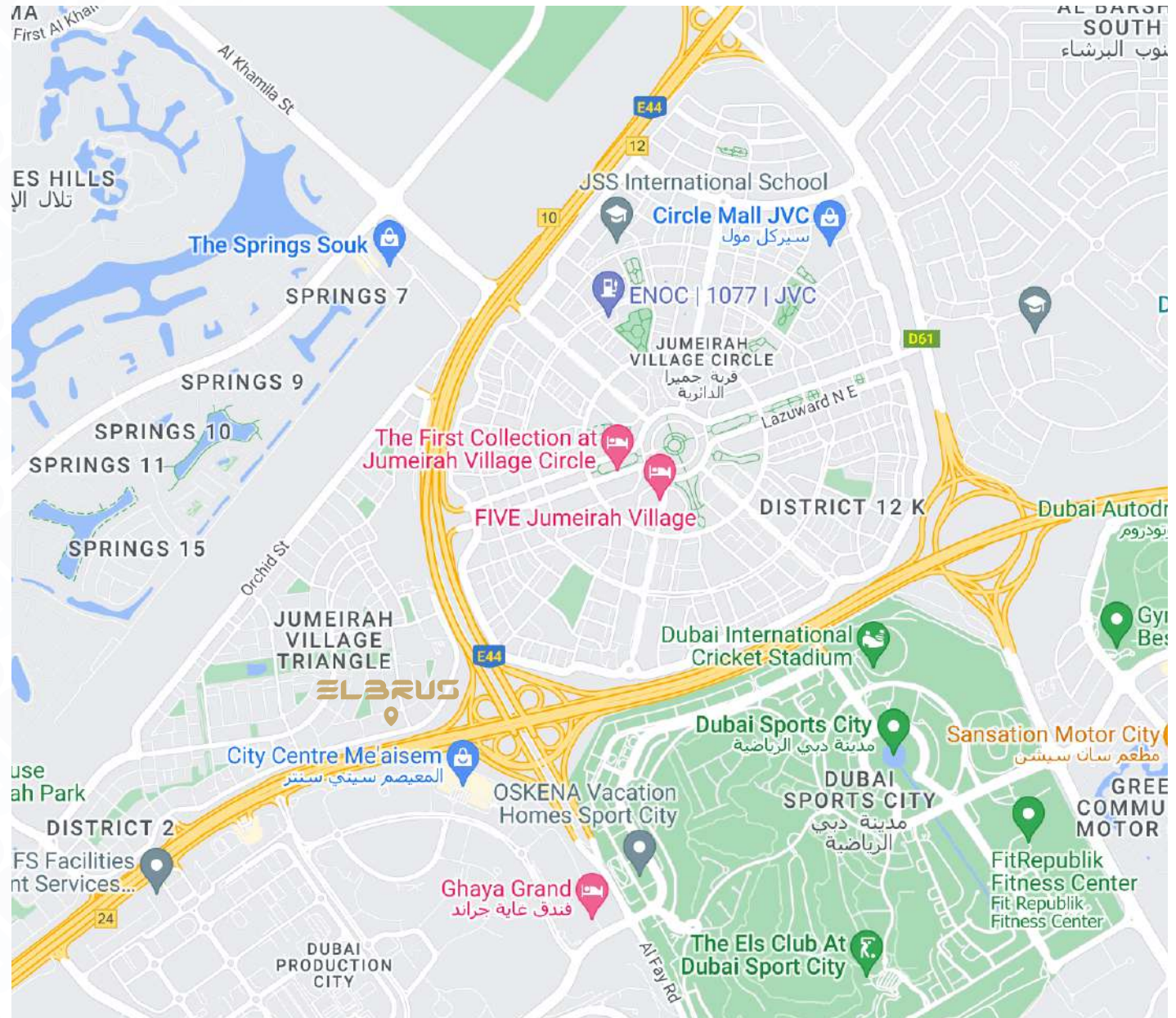
17 min

Global village



20 min

Dubai mall





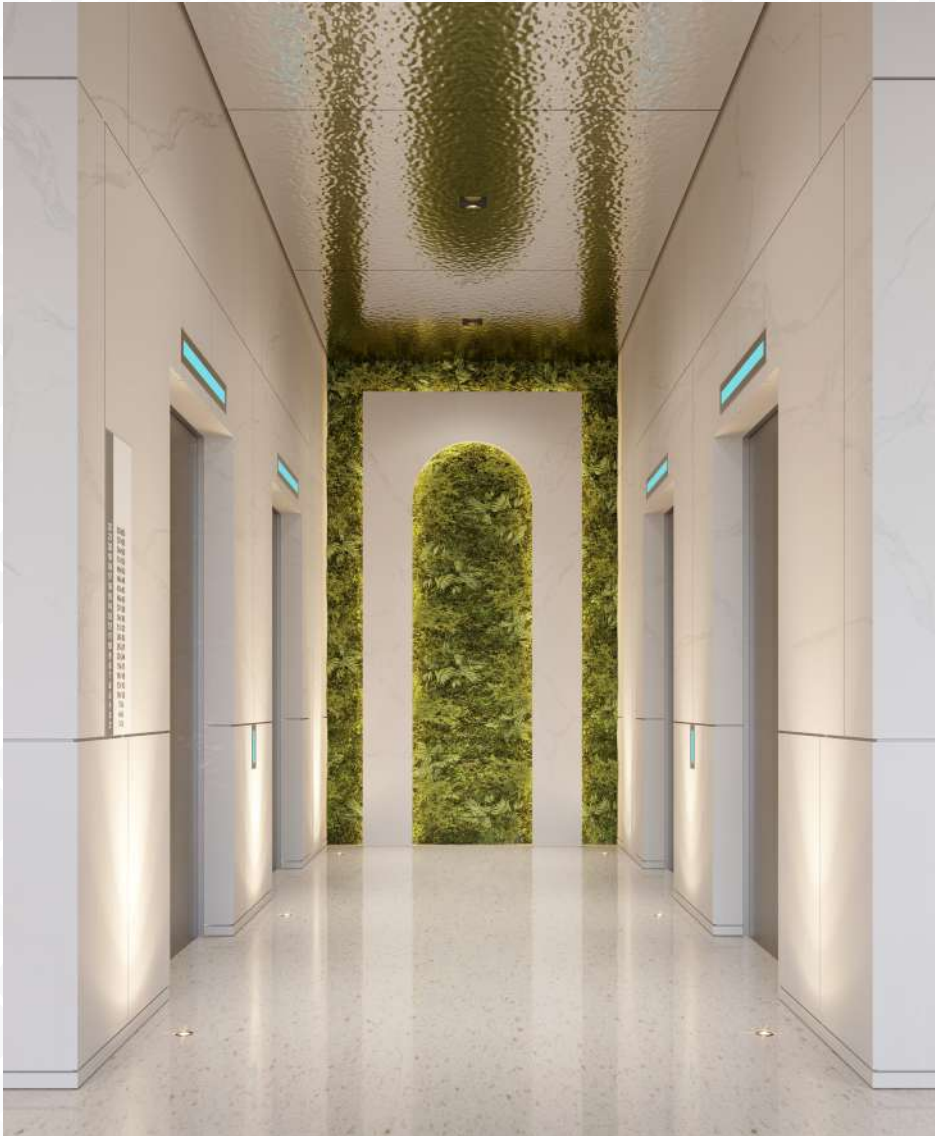
## Built To Flatter Your Future

A glamorous tower made of the best materials to guarantee that your future is distinct, modern, and joyful. Your demands are our top priority; we only want to provide the best outcomes.











## Lavish Amenities

With various opulent amenities at Elbrus Tower, you can rest assured all your needs are met. While you relax and enjoy your time with peace, your essentials are fully taken care of with fun activities and necessary facilities, from a cutting-edge gym to a safe area for your children to play and more.





## Fully Equipped Gym

Experience luxury at the world-class gym, featuring state-of-the-art equipment and top-notch amenities. With invigorating workouts tailored to your preferences and fitness goals, with expert trainers and staff to ensure an unparalleled fitness journey.







## Furnished Apartments

Indulge in the ultimate luxury living experience where 35 floors of opulent, fully furnished apartments await you.



## Interior

Stepping into the Elbrus Tower is an experience of the epitome of luxury living. Its interior design is thoughtfully designed to create an environment where families can shape their future in the best possible way with utmost comfort and luxury. As each of this tower's apartments is furnished with the world's most incredible materials and modern designs, you can admire your everyday lifestyle in this tower. Inspired by its surrounding landscape, the interior reflects the Emirate culture with spacious living areas flooded with natural light and warm atmospheres.

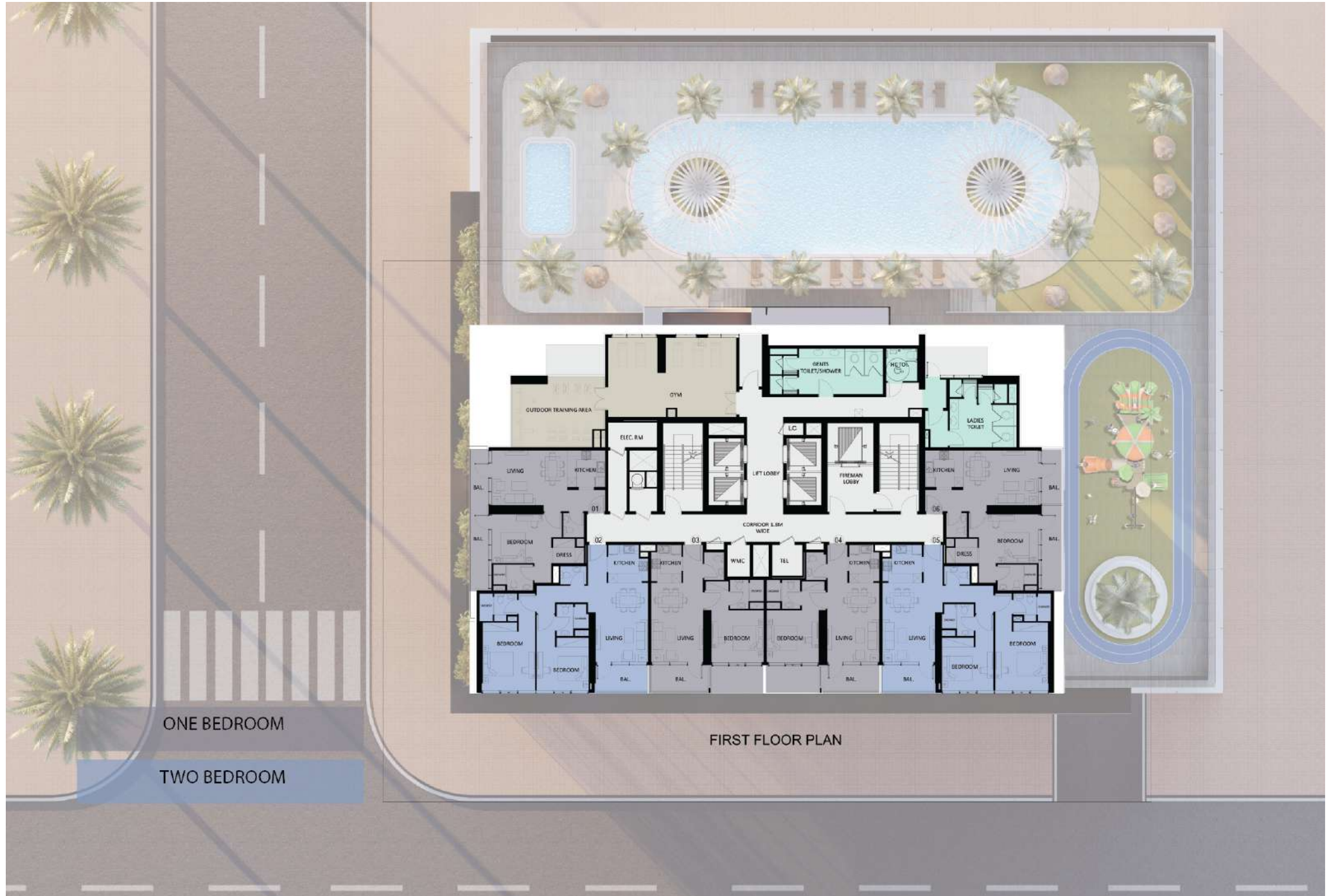


## A Place To Call Home











TYPICAL 2nd - 9th FLOOR PLAN

STUDIO

ONE BEDROOM

TWO BEDROOM





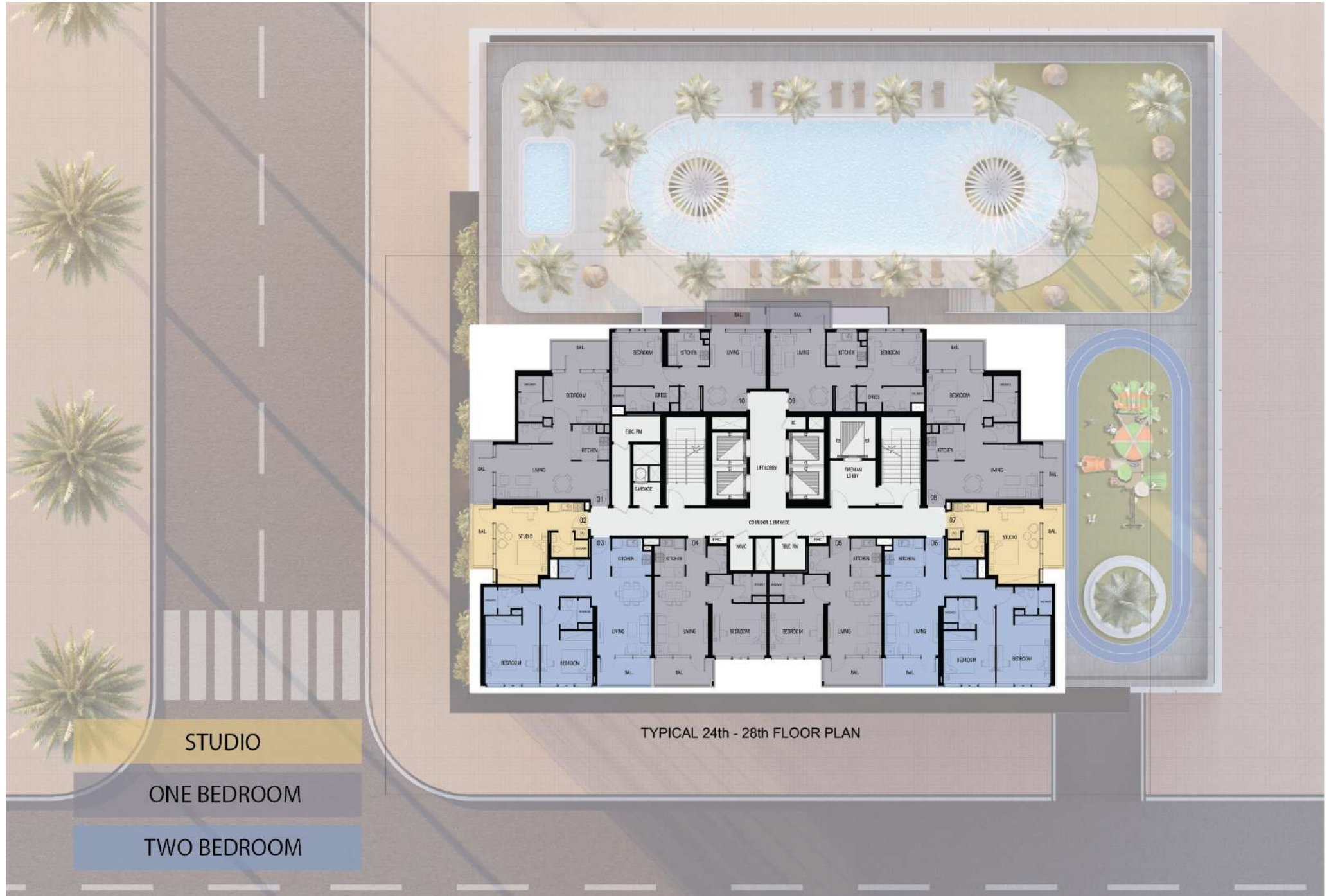


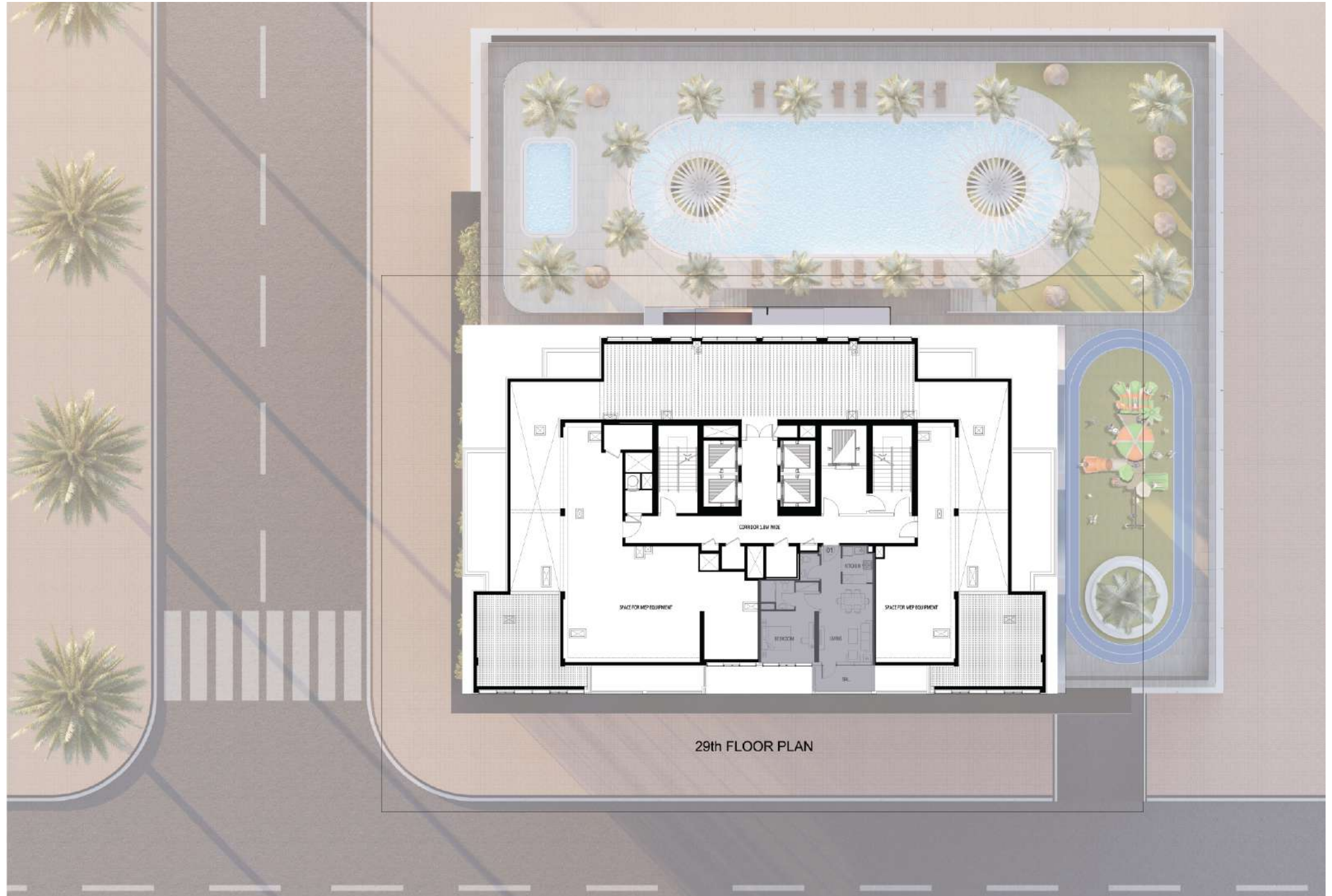
STUDIO

ONE BEDROOM

TWO BEDROOM







29th FLOOR PLAN





## Decades of Achievements

+44  
Years of Experience

+250  
Completed Projects

42  
Companies

### About Tiger

Tiger Contracting Co. L.L.C. is a highly renowned construction company in the Middle East, established in the UAE in 1976. It holds the prestigious “First Category” distinction, reflecting its commitment to excellence and quality standards. Our goal is to build homes that blend the Emirates’ heritage with modern architecture and create vibrant spaces that reflect their residents’ stories.

# Latest Projects



The Square Tower



O2 Tower



Regina Tower



Blue Waves Tower



# Under Construction



Cloud Tower



Seslia Tower



Nobels Tower



The V Tower



# TANAMI

PROPERTIES

## CONTACT US

+971 4 248 3400 | +971 55 162 3236

Email Us

info@tanamiproperties.ae

For More Info...

[www.tanamiproperties.com/Projects/Elbrus-Tower-at-JVT](http://www.tanamiproperties.com/Projects/Elbrus-Tower-at-JVT)



## ADDRESS

Office 3405, Marina Plaza,  
Al Marsa Street, Dubai Marina, UAE



# TIGER

PROPERTIES