

وترز أڤ WATER'S EDGE

YAS ISLAND LIVING



ALDAR

EVERYTHING WE DO COMES FROM THE HEART

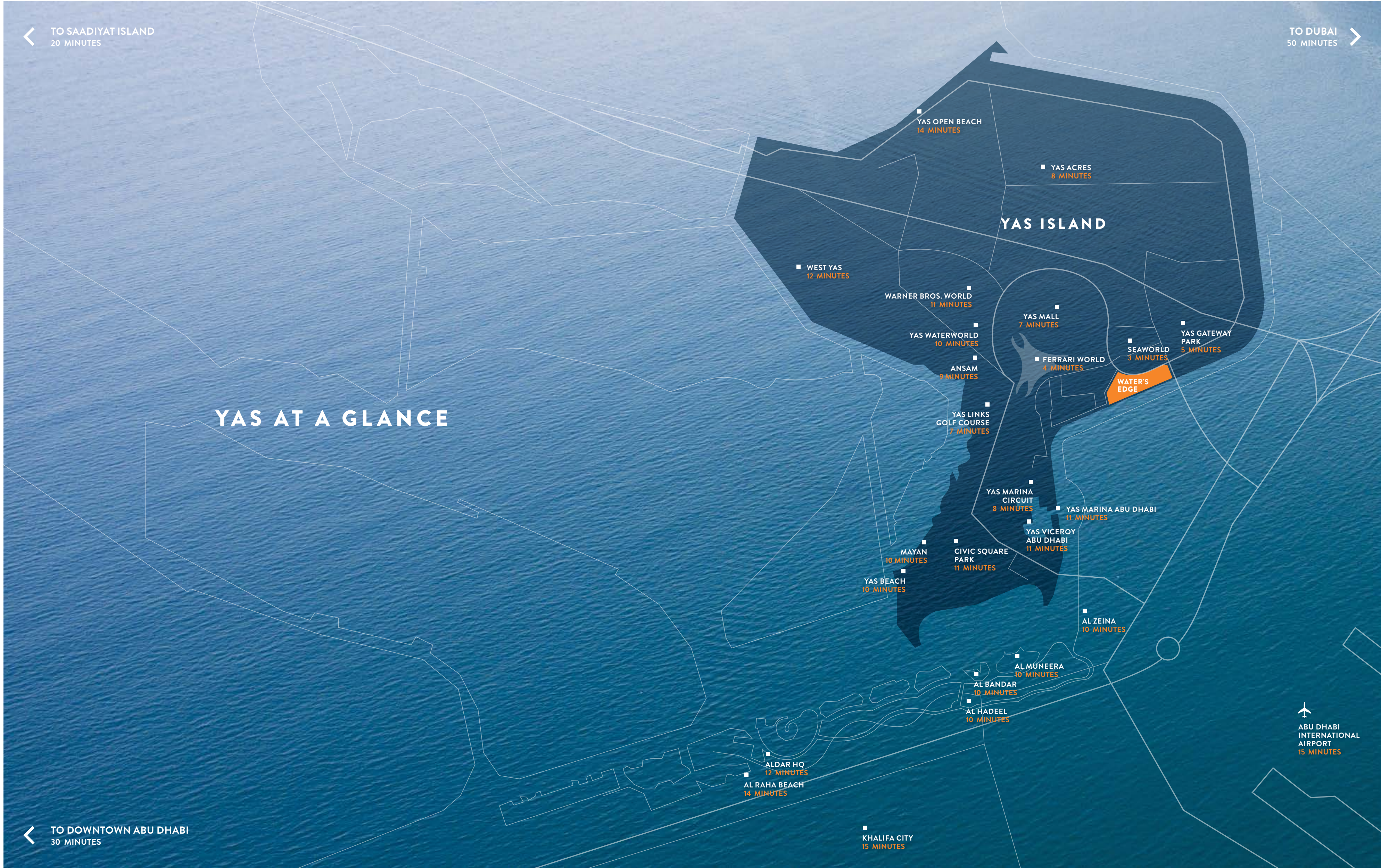
We are one of the most trusted and recognised real estate lifestyle developers in the UAE. Our goal isn't simply to build property, but to design communities that people love to live in. Because home isn't just a place, it's a feeling, and that's what we promise to deliver every day.



YAS ISLAND



Welcome to a natural island where every activity under the sun is just moments away. Walk with powdery white sand between your toes, kayak through winding mangroves and try on the latest collections at Yas Mall. Then sit back with a sundowner at the marina, all without ever leaving Yas' turquoise shores. Whenever you're in the mood for an adrenaline rush, Yas Waterworld and Ferrari World are just a loop-the-loop away.





YAS BEACH

ONLY 10 MINUTES AWAY

Sail, kayak, windsurf, paddle board, or simply kick back with friends in your cabana. Whatever 'beach day' means to you, Yas Beach serves it up on a chilled platter.



IMAGE PROVIDED BY ABU DHABI TOURISM & CULTURE AUTHORITY

SAADIYAT BEACH CLUB

ONLY 20 MINUTES AWAY

A natural playground where grassy dunes blend into blue waters, this is the perfect spot to lay back and enjoy life to the rhythm of the DJ's mellow tunes. The infinity pool, gym, spa and selection of chic restaurants allow you to spend the day just the way you like it – with everything at your fingertips and the waves lapping at your toes.





WELCOME TO WATER'S EDGE

Move to your rhythm; between the rush of Yas Marina and the pulse of the promenade.





The destination will feature landscaped gardens, fully equipped gyms, pools and a jogging track. Residents can also enjoy a waterfront boardwalk lined with cafes, restaurants and shops.



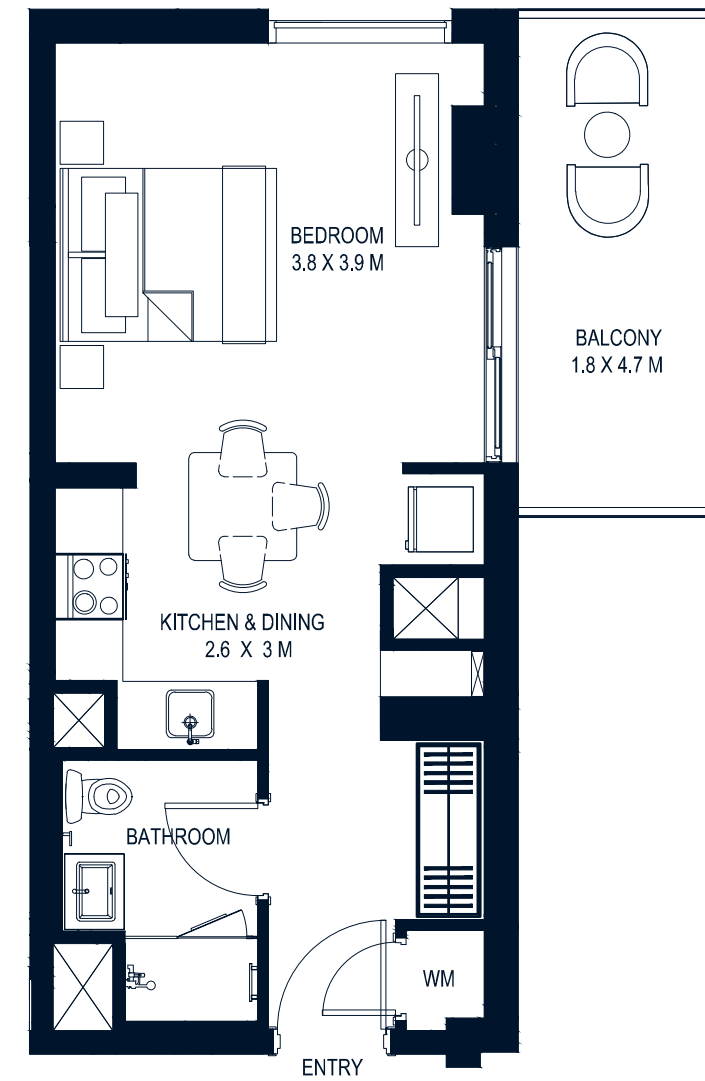


FLOOR PLANS



AVERAGE AREA: 43m²*

*Apartment sizes are indicative only and are based on Aldar's internal measurement guidelines.



S

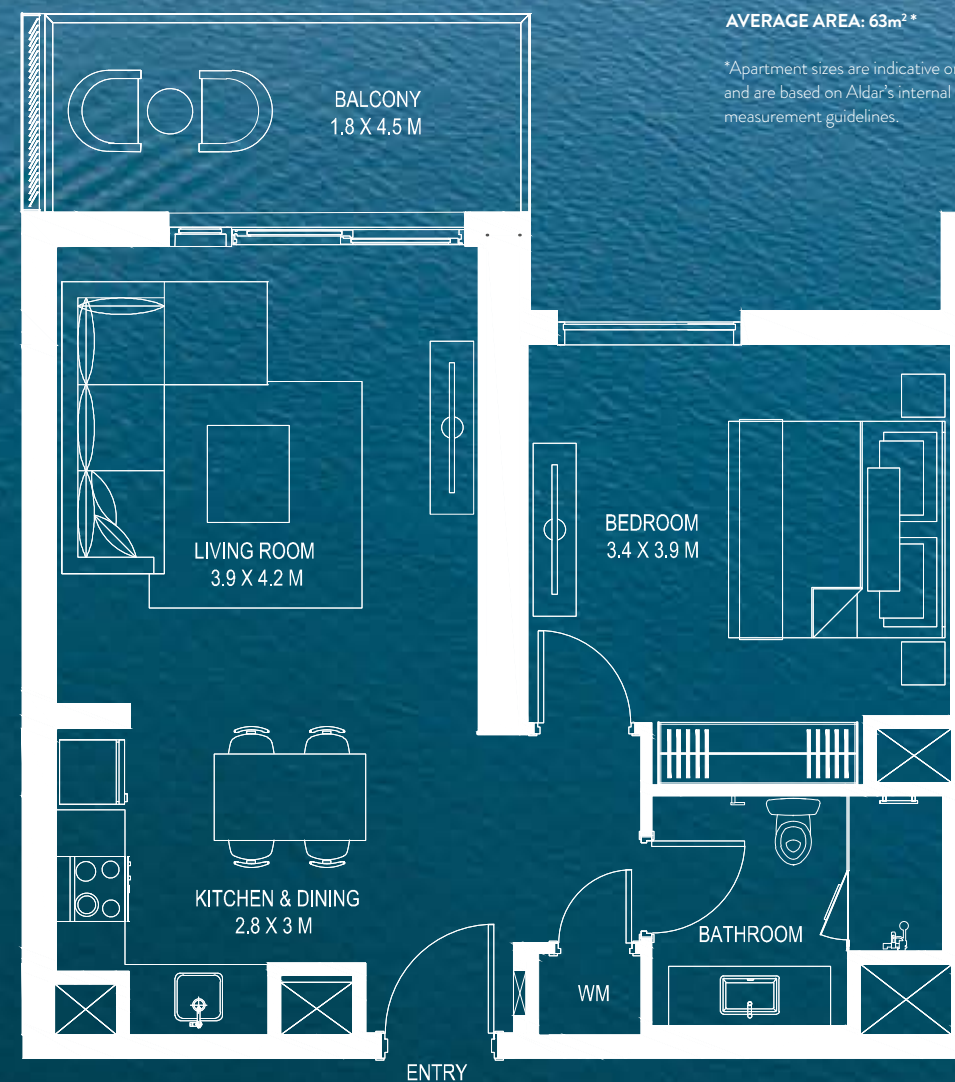
STUDIO

24

WATER'S EDGE

AVERAGE AREA: 63m²*

*Apartment sizes are indicative only and are based on Aldar's internal measurement guidelines.



1

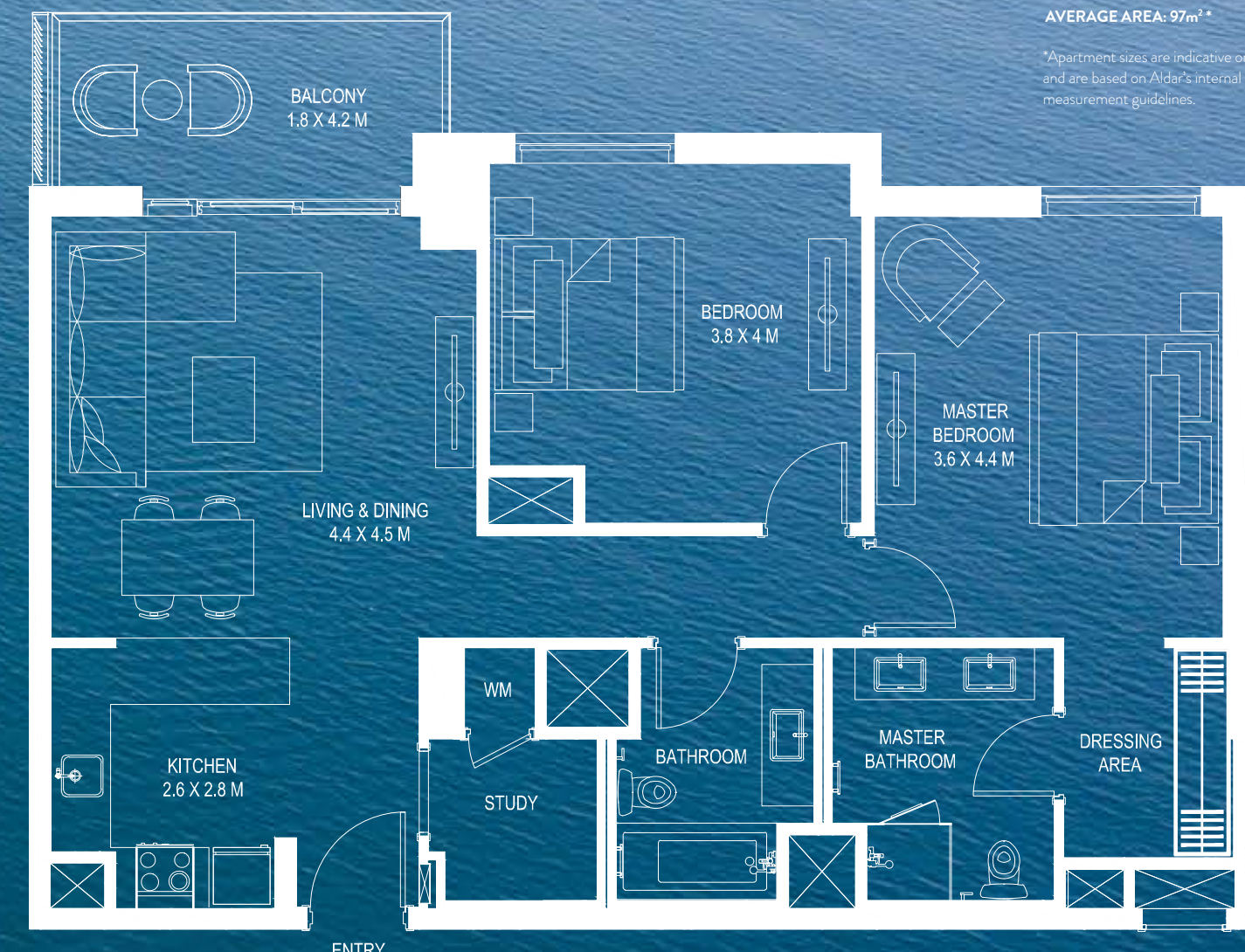
BEDROOM

YAS ISLAND LIVING

25

AVERAGE AREA: 97m²*

*Apartment sizes are indicative only and are based on Aldar's internal measurement guidelines.

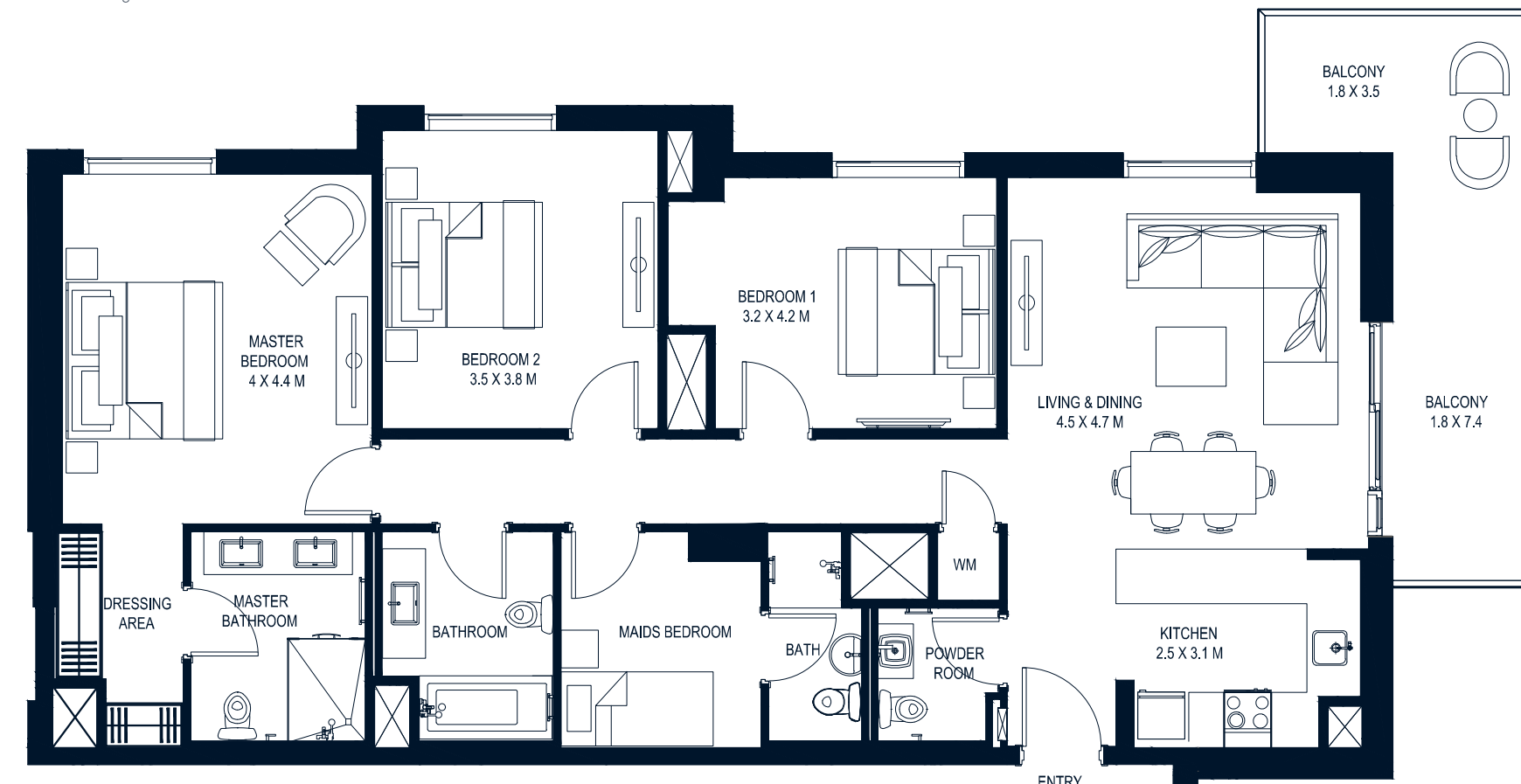


2

BEDROOM

AVERAGE AREA: 140m²*

*Apartment sizes are indicative only and are based on Aldar's internal measurement guidelines.



3

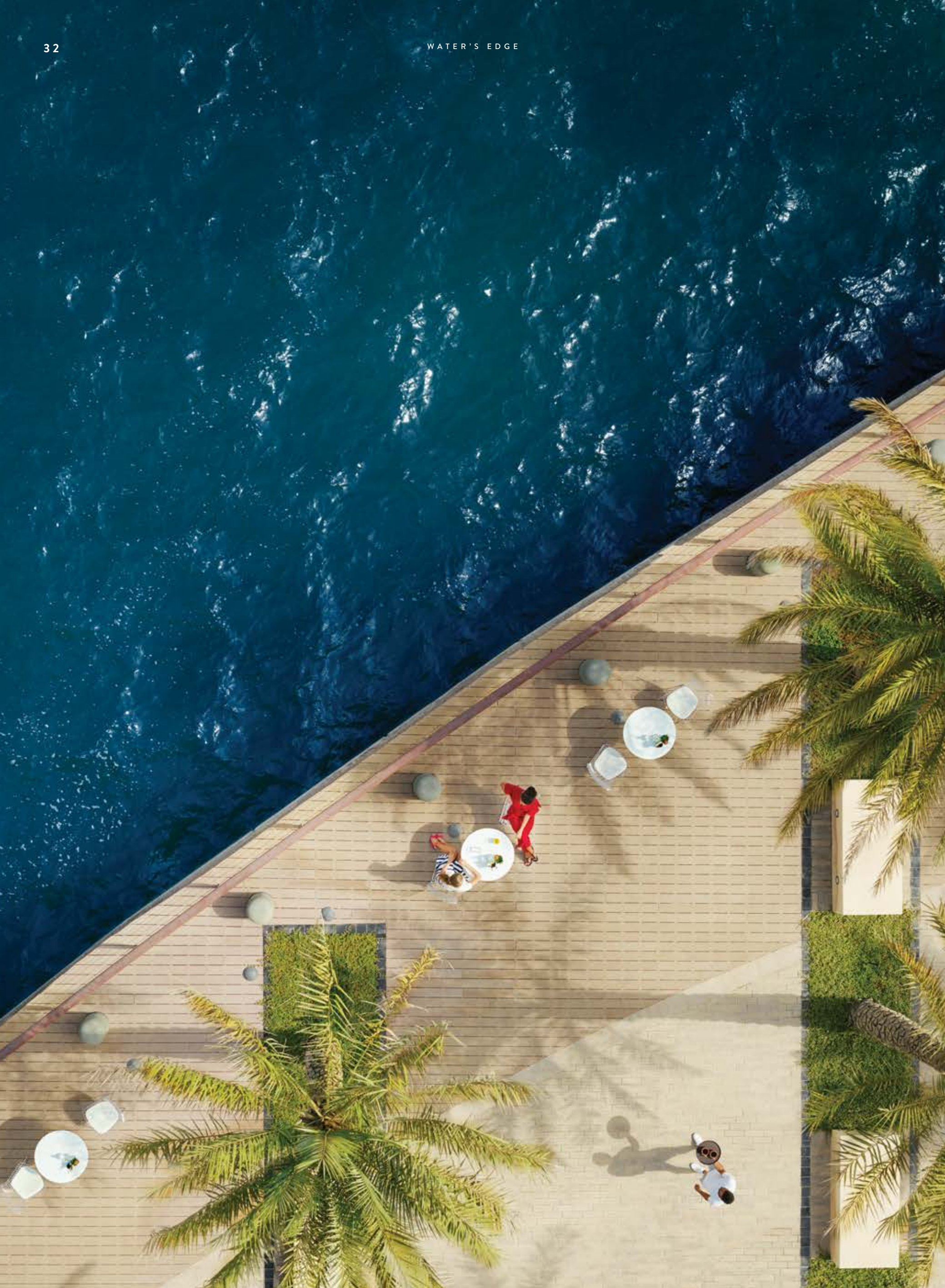
BEDROOM

Disclaimer: Note that this floor plan was produced prior to the completion of construction and is indicative only and not to scale. Changes may be made during the development and areas, fittings, finishes and specifications are subject to change without notice in accordance with the provision of the Contract of Sale. The furniture depicted is not included with any sale and should not be taken to indicate the final positions of power points, TV connections and the like. Prospective purchasers must rely on their own enquiries from time to time. Bulkheads necessary for services and structure are not depicted.









GO WITH YOUR FLOW

At Water's Edge, you set the pace. So for those who enjoy action, the jogging and cycling trails, sport pitches and pools are ideal for getting your heart pumping. While the waterfront promenade brings a relaxed taste of the Med with its stylish selection of cafes and restaurants.



A SIP OF WATER'S EDGE

Cool down with a tall glass of our signature thirst-quencher, created by an expert mixologist at Yas Viceroy. The beverage is inspired by Yas Island's calm turquoise waters with a splash of contemporary sophistication. Pause for a moment and take in its minty aroma, before letting its citrusy flavour rehydrate and refresh you.

RECIPE

- 5ml Blue Curacao
- 30 ml freshly squeezed lemon juice
- 300 ml fizzy lemonade
- Mint leaves
- Ice cubes

PREPARATION NOTES

- Pour Blue Curacao into a mixer
- Add lemon juice
- Fill mixer with ice cubes
- Shake the mixer well for 20 seconds
- Pour the liquid into the glass filled with ice cubes
- Top up the glass with fizzy lemonade
- Garnish with mint leaves

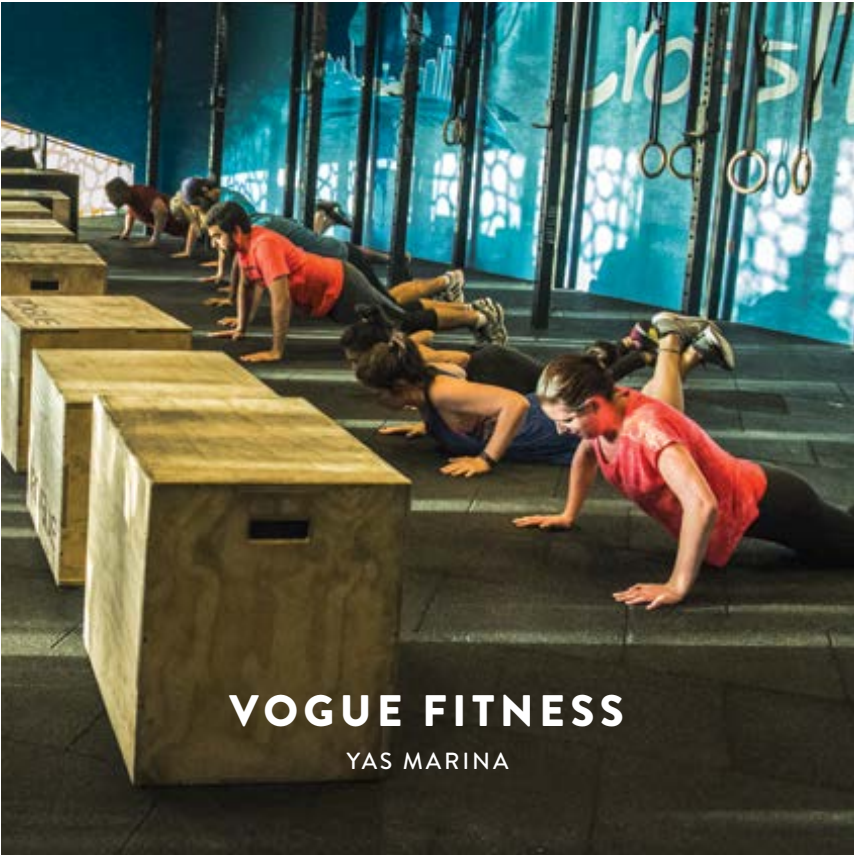




Thrill-seeker or max-relaxer, there's something for everyone at this Emirati-themed waterpark.



Shopping for fun or fashion is just the beginning at Yas Mall. It's easy to spend the whole day enjoying its huge selection of restaurants, cafes, play centres and cinemas.



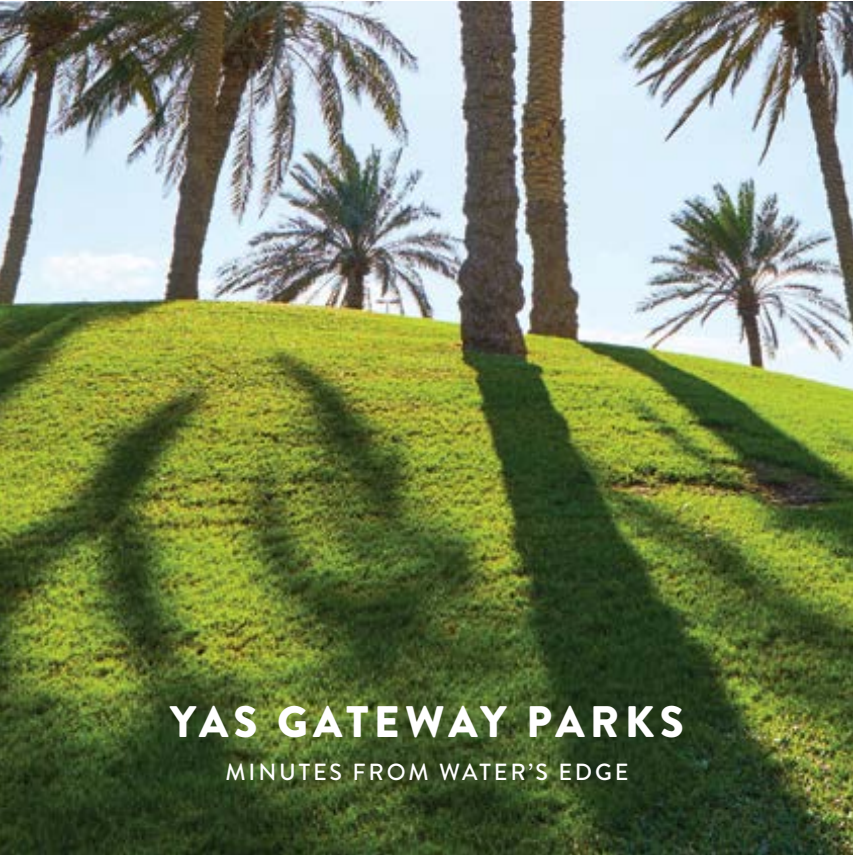
Feel great and look amazing, with personal training sessions featuring a sea view.



112 bunkers across an 18 hole course surrounded by mangroves. Yas Links is a beautiful waterfront challenge for experienced golfers.



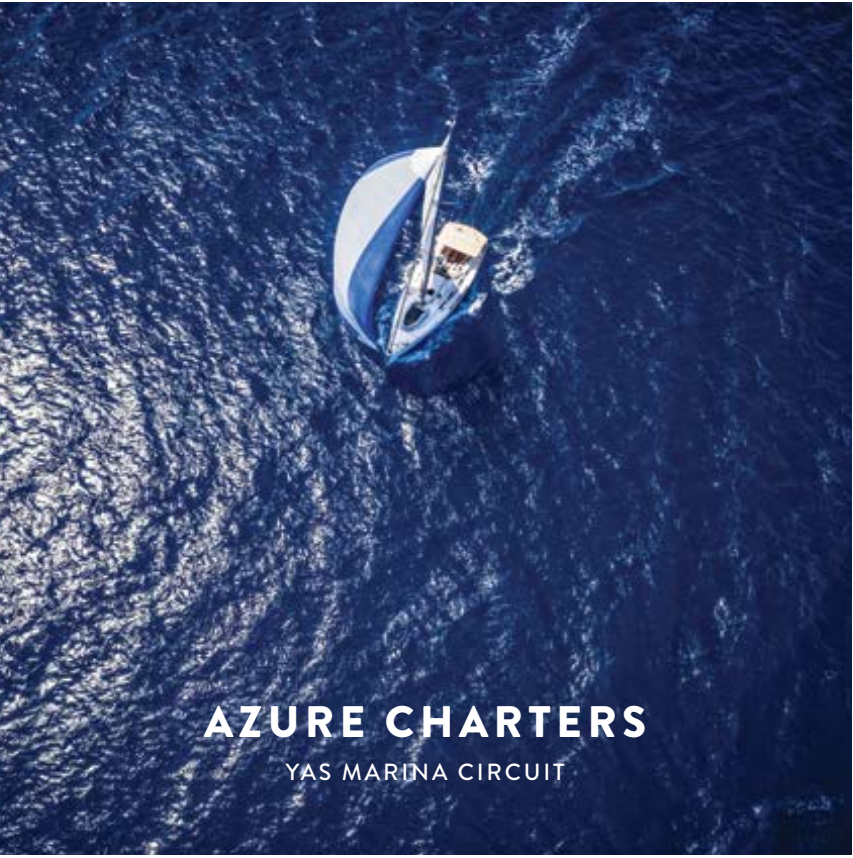
Follow in the footsteps of F1's best and break your own personal record on the 5.5km track. Open to walkers, runners and cyclists every Tuesday.



Find a shaded picnic spot and chill out with friends in sprawling parks just minutes from Water's Edge.

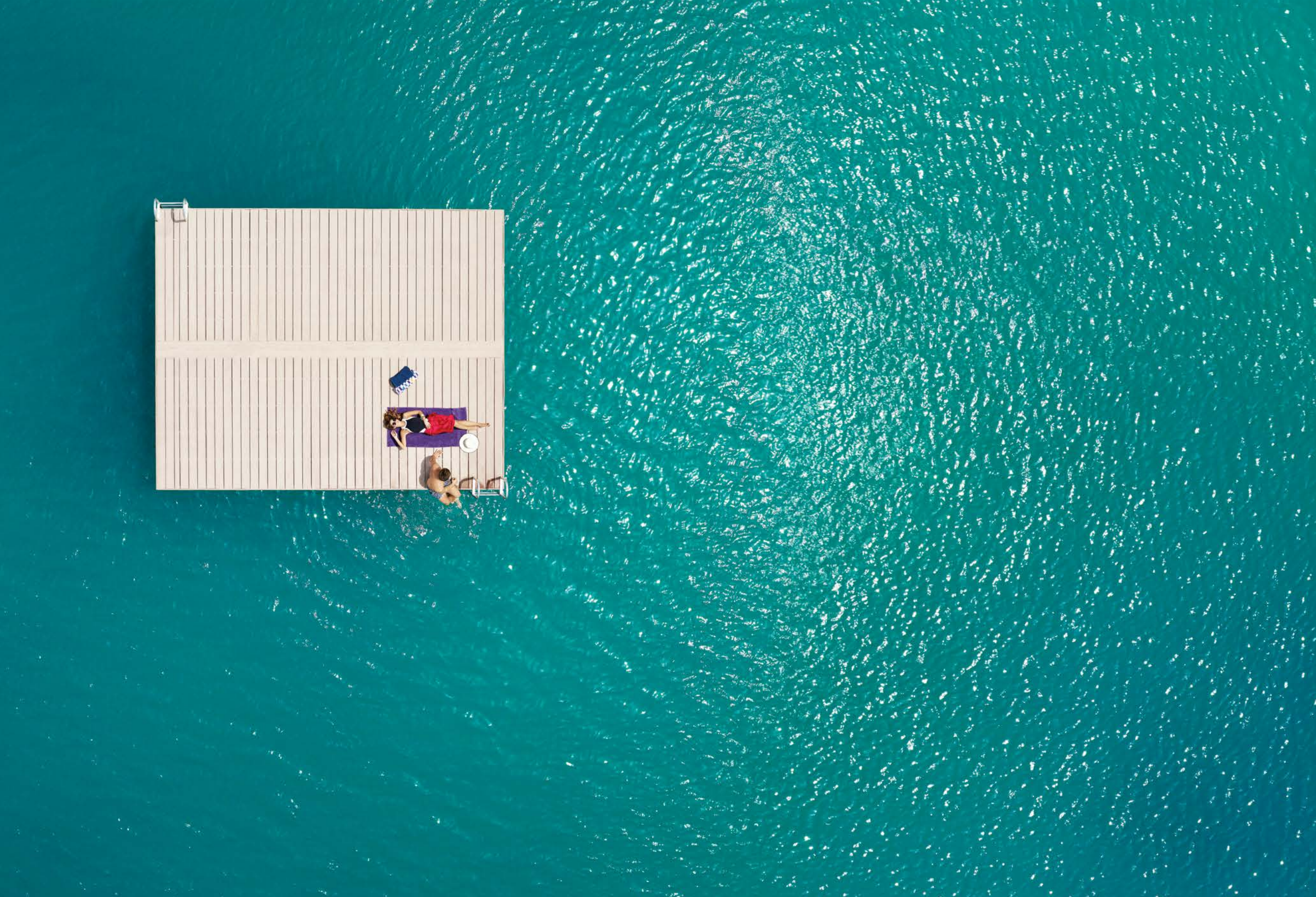


Enjoy a chic, modern twist to Indian cuisine with lots of style and spice.



Set sail for fun under the sun in 5-star comfort aboard a chartered yacht.







+971 4 248 3400

+971 55 162 3236

info@tanamiproperties.ae

www.tanamiproperties.com/Projects/Waters-Edge-Building-5