

P A L M  
V I E W











*1*

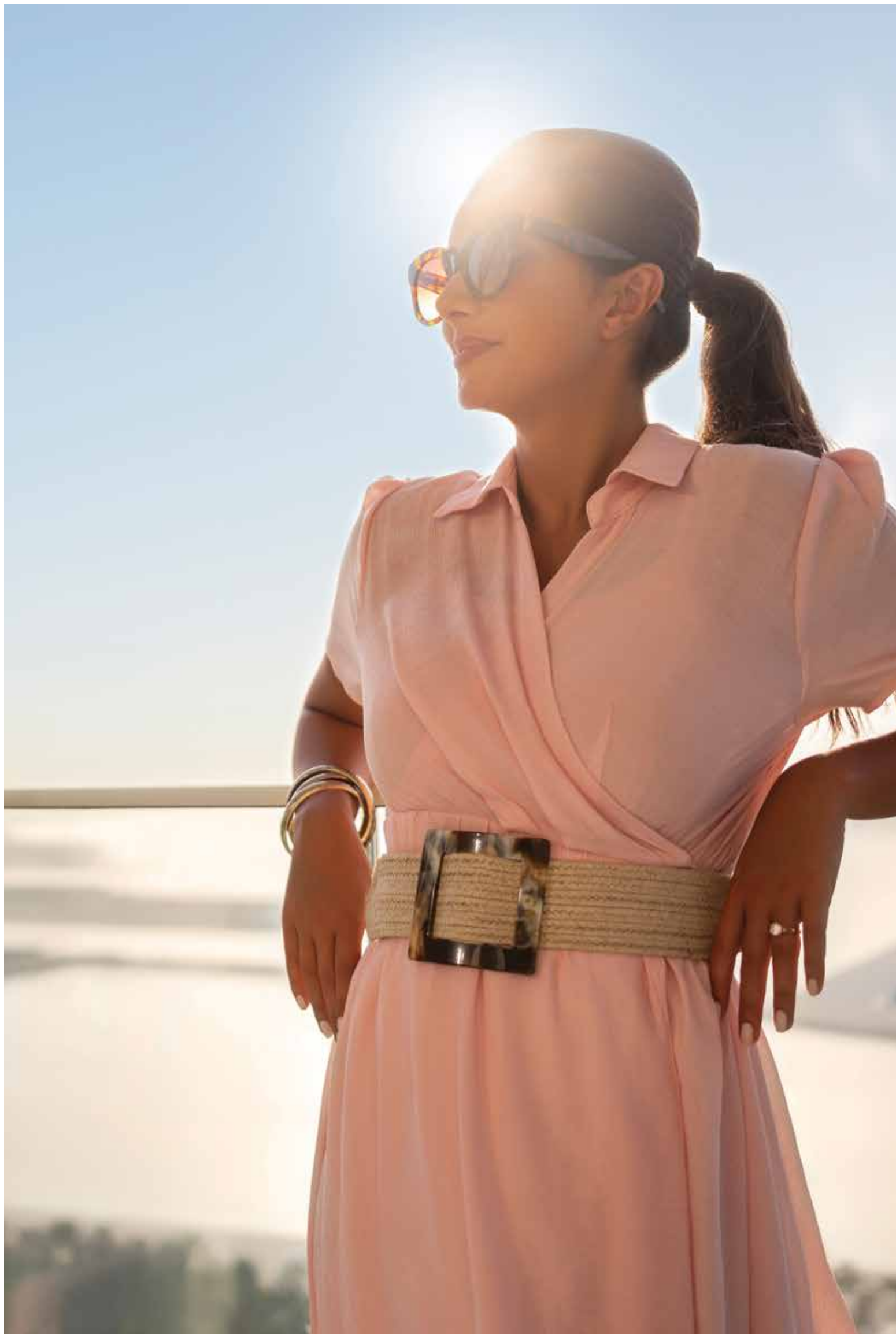
A SPACE TO  
BREATHE



EXCLUSIVE  
CITY SIDE  
*LIVING*







## WHERE THE SKYLINE MEETS THE SHORE

Set against the towering skyline of Dubai, Palm View stands tall as the gold standard for refined living. With spaces that peer out at both the glistening city and the glimmer of the sea, Palm View offers unparalleled views, larger-than-life comfort and a tailored focus on design.

Bringing together the best of architects and material, Palm View's innovative design and dedication to superior craftsmanship has raised the bar for luxury living.

**Immerse yourself in the city**



I N A N  
U N P A R A L L E L E D  
L O C A T I O N





The background of the entire page is a vibrant, abstract marbled pattern in shades of teal, turquoise, and deep blue, accented with fine, shimmering gold particles. The pattern flows and swirls across the frame. In the center, there is a solid teal rectangular area that serves as a backdrop for the page number and title.

# 2

A SPACE TO  
CONNECT



## THE CITY AT YOUR DOORSTEP

Finding its home at the nexus of a cosmopolitan neighbourhood, Palm View is flanked by the stunning Marina and the historical area of Jumeirah.

From its impeccable design to the flawless interiors, Palm View effortlessly mirrors the lifestyle of its neighbours on billionaire's row. With its vast network of transport options, the most exclusive hubs of business, cuisine and retail are at your doorstep.

Palm View is an effortless choice for those who want to experience life at its finest.





Whether it's a casual stroll through the beautiful Marina or a quick dip in the clear blue waters, the city is your playground.

Palm View emphasizes the comforts of city center living coupled with the serenity of a waterside home. From our commitment to craftsmanship, unwavering attention to detail and celebrated service, we offer you the epitome luxury homes.

At Palm View, you can enjoy your city as much as your neighbourhood.





Legend

- Palm Jumeirah Monorail
- Palm Jumeirah Monorail Stations
- - - Palm Jumeirah Monorail - Planned Extension
- - - □ Palm Jumeirah Monorail - Planned Extension Stations
- Dubai Tram
- Dubai Tram Stations
- Dubai Metro
- Dubai Metro Stations
- Sheikh Zayed Road
- Sheikh Zayed Road Interchange
- RTA Boat Station







3

A SPACE TO  
CALL HOME

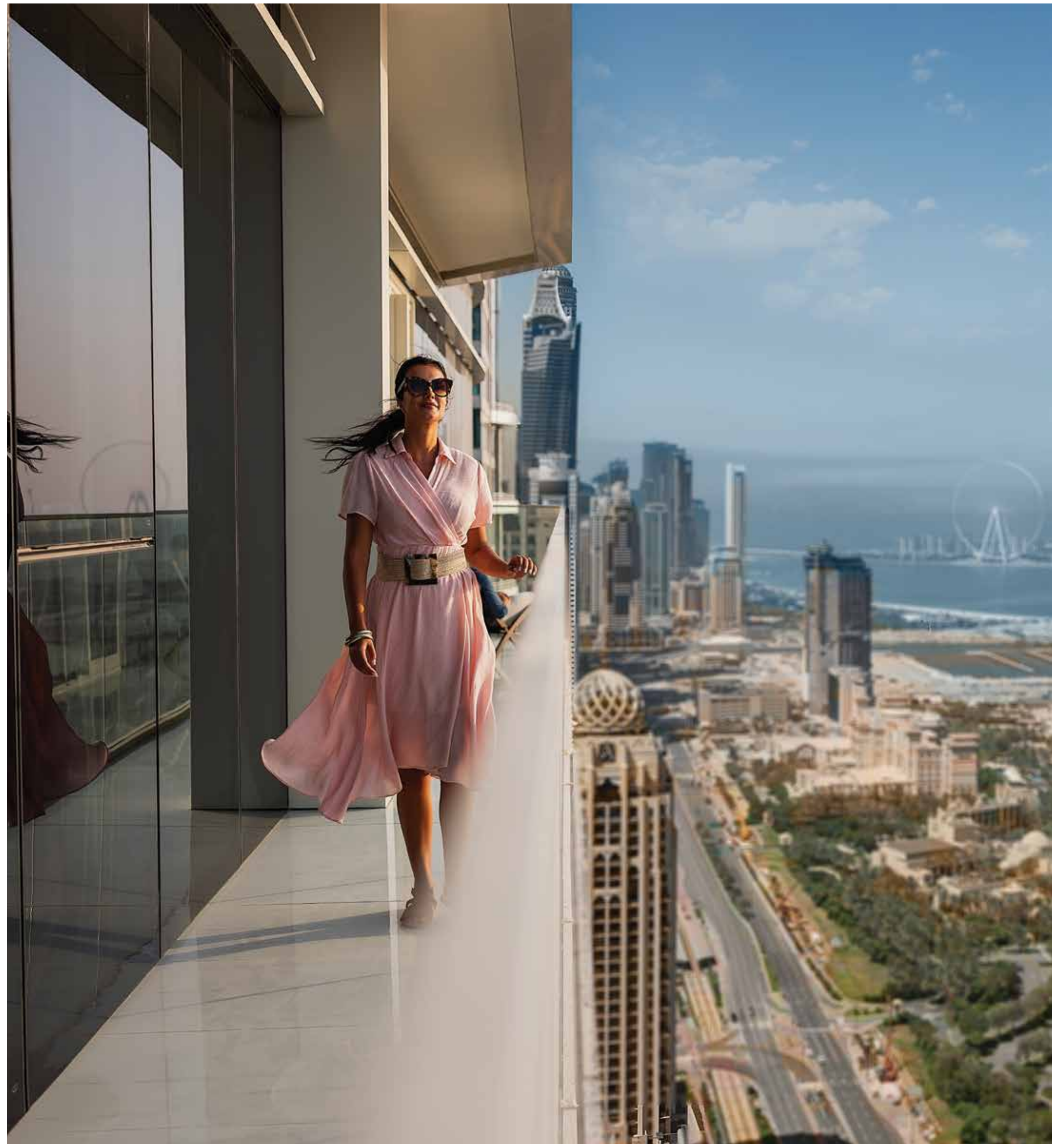


## CITY LIVING LIKE NO OTHER

Picture floor to ceiling windows that dot your home as you gaze over the cityscape of Dubai. Your feet dance along the exquisite marble flooring as you make your way through the vaulted ceiling living room into the elegant and luxe master bedroom.

This is but a glimpse of the possibilities that Palm View offers.

Set to be an urban utopia, it comprises of 263 apartments, fully-furnished to the highest standard of bespoke living, personalized services and contextual architecture.







It pairs all the benefits of  
a hotel with the comfort  
and warmth of a home.



With part of the property dedicated to  
a hotel operated by Avani, our valued  
homeowners also have the option to avail  
of all the prestigious hotel services offered.



## A WORLD OF POSSIBILITIES

The benchmark of august community living, Palm View reflects a vision at the crossroads of comfort, luxury and design.



An exclusive collection of 19 apartment layouts catered to your convenience



263 panoramic sea and cityscape view apartments for a truly unique perspective



Tailor make your experience with a dedicated valet and private entrance



Concierge services to anticipate your needs and assist with any specific requirements



Custom furnished and crafted to a meticulous and deluxe design standard



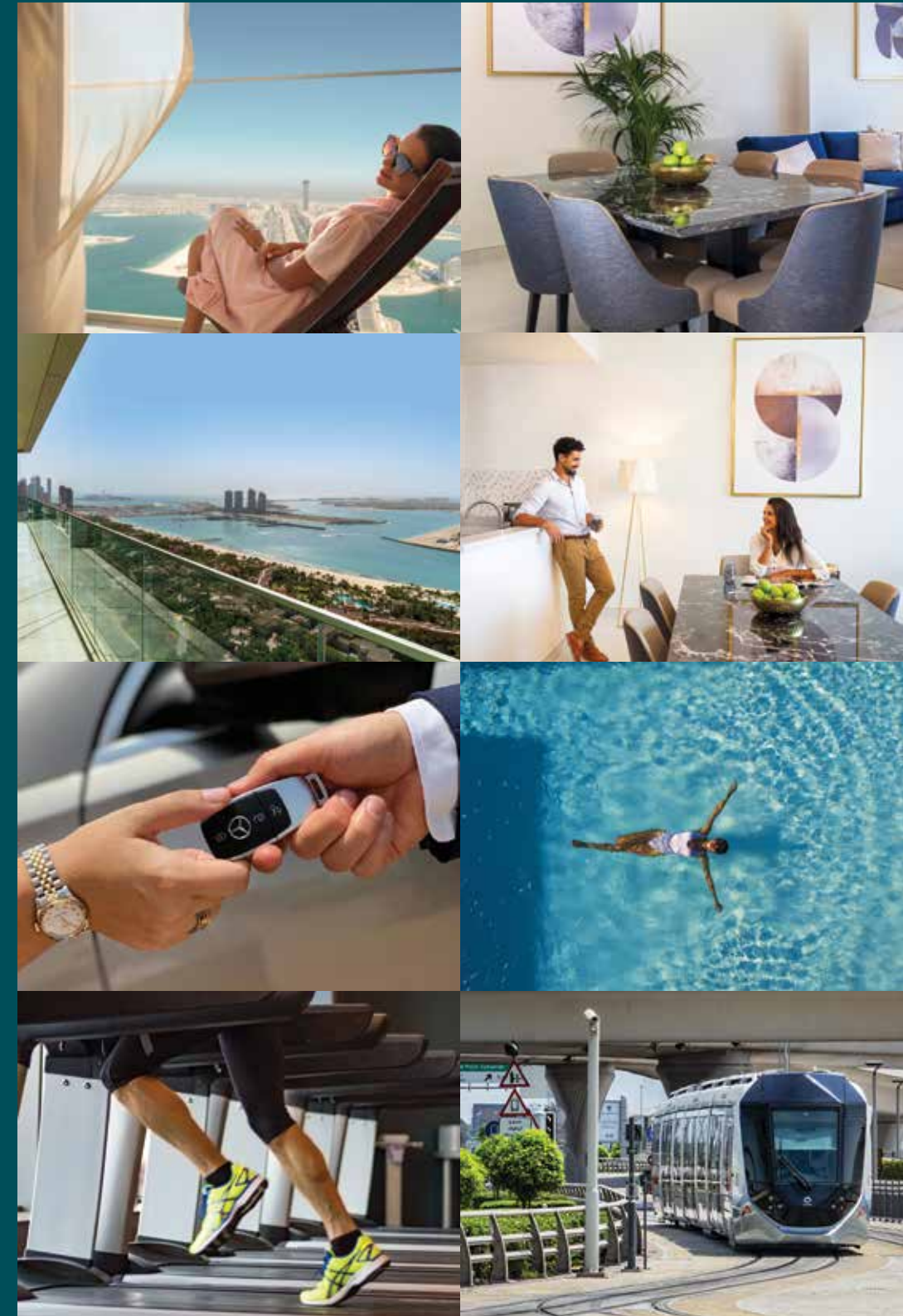
Immaculate design and lavishly sized apartments for elevated living



Bask in the golden hues of the sunset at a serene infinity pool deck overlooking the city



Front-door access to the most convenient city transport hubs for world-class shopping, entertainment and beaches











## COMMODIOUS SPACES

Life is crowned by having a place to call home and is undoubtedly one of its shining moments. The philosophy of Palm View Living is “Welcome Home” and this is ingrained into the very DNA of our lifestyle experience.

Characterised by its sprawling open-plans and fluid structure, Palm View’s apartments come with considerably larger floor space and higher ceilings than comparable Dubai homes, meaning more room to welcome the ones you love.









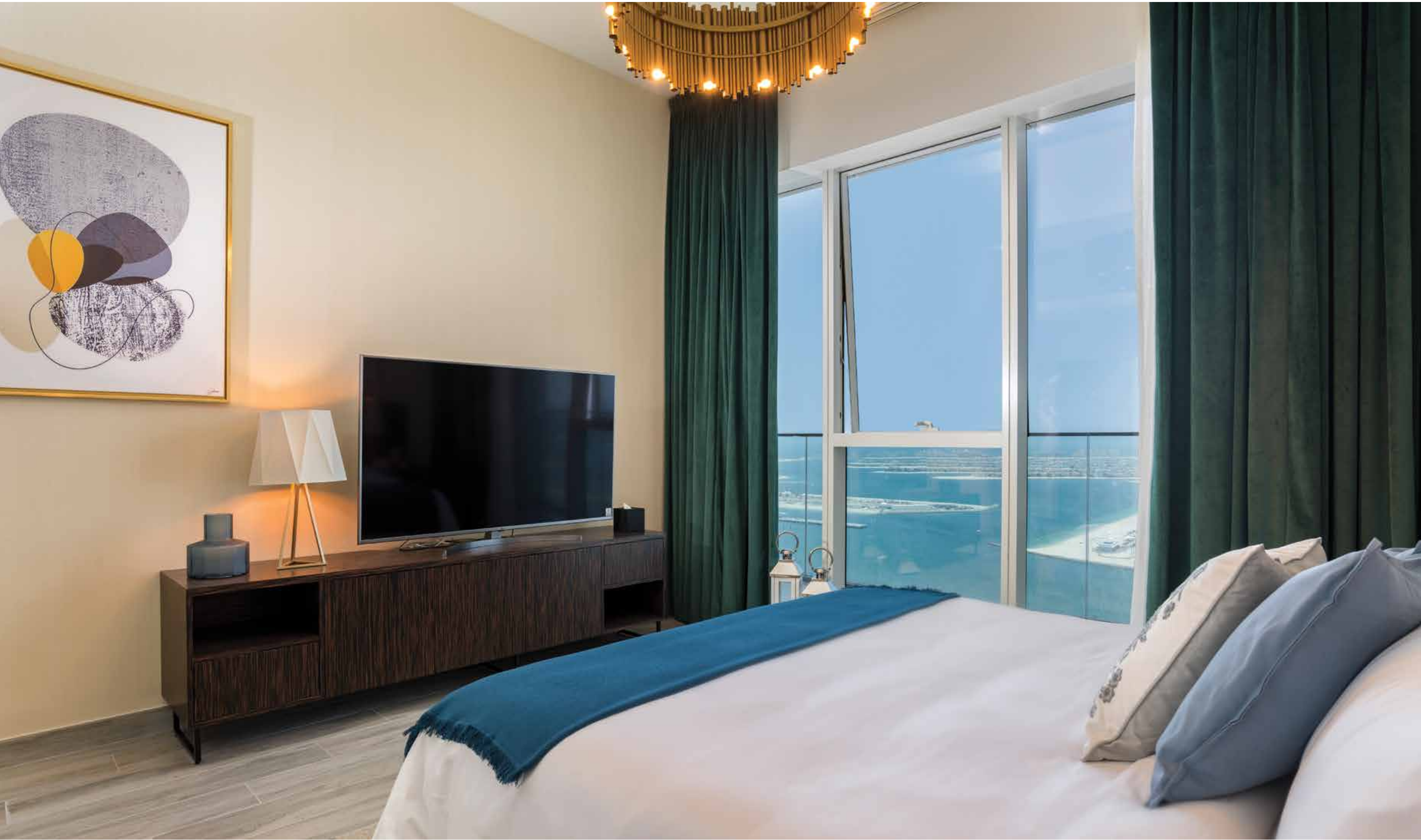
























# I N V O K E   T H E L I G H T ,   D E P T H A N D   S P A C E

Drawing inspiration from modernist movements, Palm View's extends across 43 stories of an elegant steep glass façade, complementing the tastefully decorated interiors.













A palette of rich, soft tone carpets and furnishings, large format marble tiles and natural oak hardwood engineered flooring exudes a sense of depth and distinct quality to each residence.



Interiors reflect a palette of calm neutrals and natural materials complemented by traditional details. With whites and pale greys softened by warm timber to create a clean and minimal luxury of perfect simplicity





4

H O L I D A Y  
H O M E S B Y

AVANI  
Hotels & Resorts



FULLY FURNISHED  
& HASSLE FREE  
OWNERSHIP

With the unprecedented growth of short-term home rentals people are increasingly in search of a home away from home.

To answer this call and facilitate the demand, we created Holiday Homes by Avani, a unique property-management venture whereby owners and investors in Palm View Living can opt to have their homes supervised by the world-renowned teams from Avani Hotels, part of the Minor Hotels. From around the clock concierge services to bookings and even managing payments, Avani's established team members take care of your every need or turn your property into a profitable cash flow return.



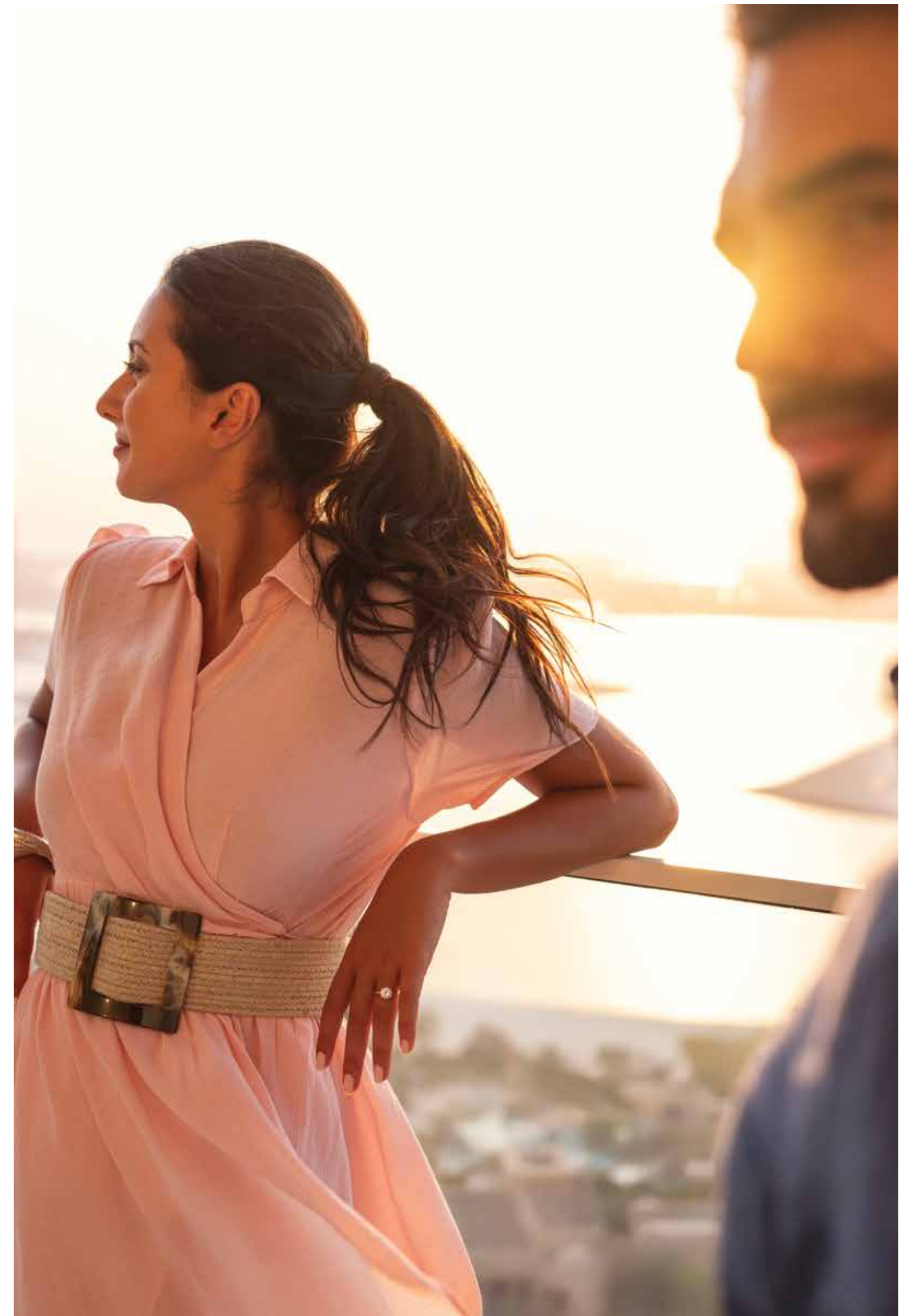


A SPACE TO PAUSE,  
WHERE THE CITY PLAYS

Wake up, reinvigorated, to the amber rays of the morning sun gliding through the window. Grab a morning coffee at your local café as you amble across to the beach.

If a luxurious breakfast is on the cards then take your pick from the array of restaurants at your disposal. Retail therapy can quite easily be accessed, courtesy of the newly opened Nakheel Mall or renowned Mall of the Emirates. For a cultural retreat, the popular Media City amphitheater is around the corner. Where else could you watch fireworks over the Palm, the adrenaline rushed Skydivers, sun worshippers, million dollar yachts, and the hustle and bustle of every day Dubai life from your balcony or living room?

**A place to call home**











## CONTACT US

 +971 4 248 3400 |  +971 55 162 3236

Email Us

info@tanamiproperties.ae

For More Info...

<https://www.tanamiproperties.com/Projects/Palm-View>



## ADDRESS

Office 3405, Marina Plaza,  
Al Marsa Street, Dubai Marina, UAE